

**Bell Vernon Kennel Association**  
**Running Order and Class Information April 19-21, 2024**  
***Fun Fur Paws – Mt. Vernon, WA***

**I-5 North/South:** Take Exit #218 (Starbird Rd) and East (Southbound turn left, Northbound turn right). Continue East to the 4-way stop at Bulson Rd and turn left. Follow Bulson Rd. to the intersection with Tyee Rd (0.7 mi). Turn left and then after a short distance, turn right onto Stargate Place (look for the sign for Fun Fur Paws). Follow the road to the arena and parking.

**Judge:**           **Torka Poet & Geoff Teare**

**Class Schedule:**   **See charts below: Start 10:00 AM Friday and 9:00 AM on weekend**

**Opening/Closing:**   **Opened 3/6/24, closed 4/12/24**

**Walkthroughs:**    There will be split walkthroughs for **Exc Std and Jww**. There will be plenty of walkthrough time for each class, so don't worry. ☺ If you have questions or concerns, please come to the score table for help.

**Veterinarian:**     24 Hour Pet Emergency Center, 14434 Avon Allen Rd., Mt. Vernon, WA 360-848-5911

**Moveups:**         The deadline for moveups is 4/15/24 at 6PM. Moveups must be received in writing or email by that deadline. Day-to-Day moveups are being accepted for Saturday and Sunday.

**Setup and crating:** **There is NO general crating allowed in the building.**

**Popup tents and crating is available along the West fence and North grass areas. If you are crating from your car, make sure to leave windows/doors open for air flow. If using a popup or crate on the grass, please do NOT use mats or leave items overnight.**

**RVs:**             Overnight RV camping is limited and must be reserved. Email Marie Padovan - padovandogs@comcast.net with questions.

**Food:**            The club will NOT be providing lunches but WILL have light snacks, coffee and tea available.

**Workers:**        If you can help out for a class – or a day – let us know. We'll have a chief worker person coordinating thing and have the white boards setup like usual. THANKS! Agility shows can't run smoothly without your help!

**Measuring:**      A volunteer measuring official will be on site. Check with the score table for more info.

**Important Housekeeping Info**

Please use the exercise fields or the grassy areas around the parking lot to walk your dog. Please pick up after your dog. If your dog accidentally relieves itself on the building structure, please use the cleaning sprays provided by Fun Fur Paws.

**Pull-in parking around the building ONLY. Do NOT back in to park around the building. If you do, you will be required to re-park.**

**5 MPH Speed Limit at Fun Fur Paws**

Go To  
[www.r2agility.net](http://www.r2agility.net)  
for Check-In, Running Order, and Maps

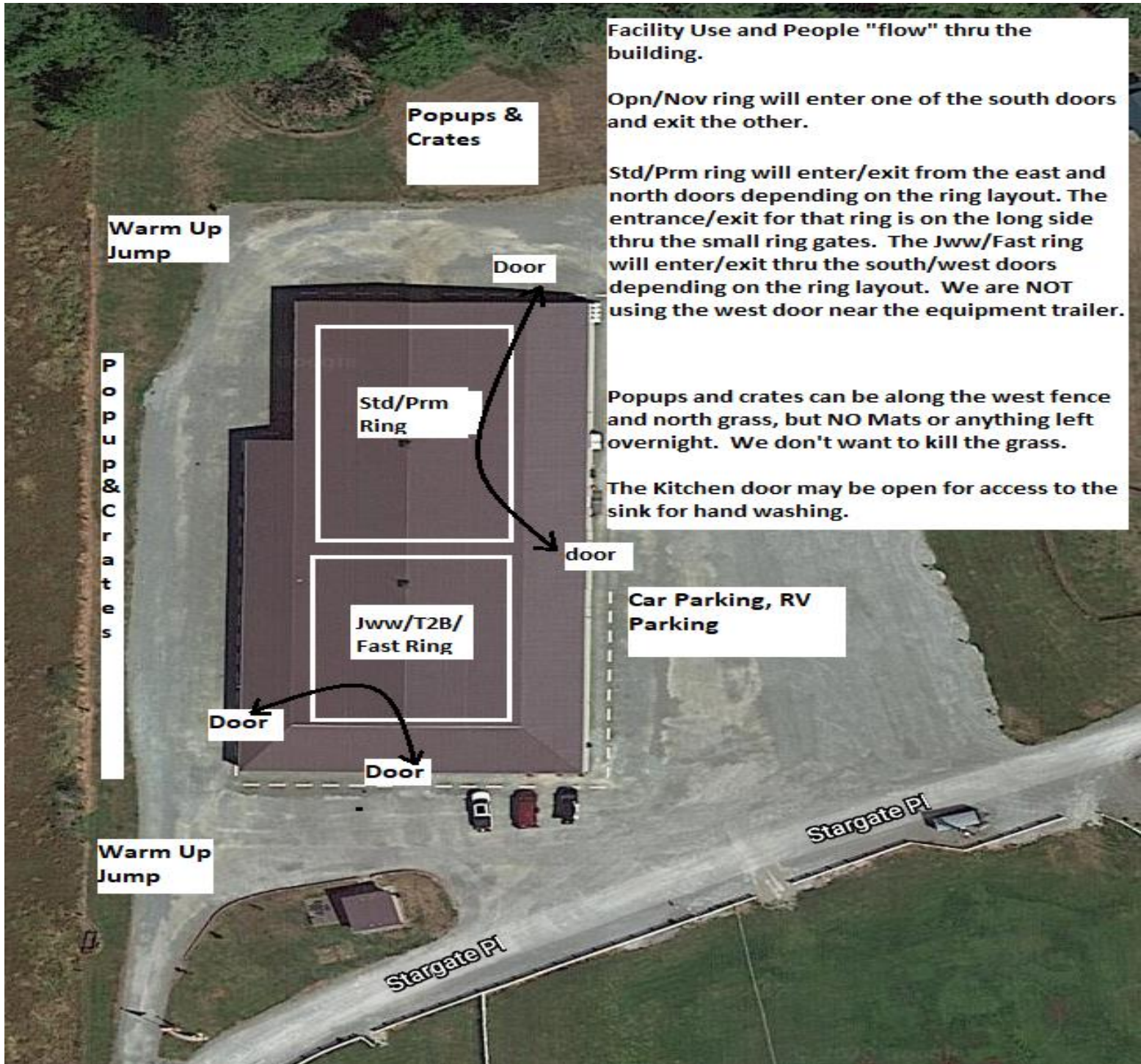
- Course Maps:** We will not be providing general paper copies of course maps. Maps will be made available on our website – [www.r2agility.net](http://www.r2agility.net) sometime after **midnight**. **Judges are not allowed to send us maps until after midnight** and we will make every effort to email/post them by 7:30 AM. Maps will be posted at a couple of places around the arena.
- Gate Check-in:** We will have a normal gate steward with a paper gate sheet and may be using an electronic gate checking and monitoring system available by any internet enabled device with a web browser.
- The system allows you to check-in, mark conflict or absent, see progress, and live scores as they are entered into the computer. Please check the status to make sure your runs are correct.
- Maps will also be available on the same page sometime after 7:30 AM.
- Results:** Results will be posted in the arena and will be available on the same web page as the running order.

**Important Housekeeping Info**

Please use the exercise fields or the grassy areas around the parking lot to walk your dog. Please pick up after your dog. If your dog accidentally relieves itself on the building structure, please use the cleaning sprays provided by Fun Fur Paws.

**Pull-in parking around the building ONLY. Do NOT back in to park around the building. If you do, you will be required to re-park.**

**5 MPH Speed Limit at Fun Fur Paws**



Facility Use and People "flow" thru the building.

Opn/Nov ring will enter one of the south doors and exit the other.

Std/Prm ring will enter/exit from the east and north doors depending on the ring layout. The entrance/exit for that ring is on the long side thru the small ring gates. The Jww/Fast ring will enter/exit thru the south/west doors depending on the ring layout. We are NOT using the west door near the equipment trailer.

Popups and crates can be along the west fence and north grass, but NO Mats or anything left overnight. We don't want to kill the grass.

The Kitchen door may be open for access to the sink for hand washing.

Popups & Crates

Warm Up Jump

Door

Popups & Crates

Std/Prm Ring

Popups and crates can be along the west fence and north grass, but NO Mats or anything left overnight. We don't want to kill the grass.

The Kitchen door may be open for access to the sink for hand washing.

door

Car Parking, RV Parking

Jww/T2B/Fast Ring

Door

Door

Warm Up Jump

Stargate Pl

Stargate Pl

	Ring 1	Ring 2
<p><b>Friday</b> <b>10:00 AM start</b></p> <p>Tall to Small</p> <p>First time in each ring is accurate, all others are estimates. Plan to be at the trial site well before the listed time in case we run early.</p>		<p><b>Fast Exc/Opn/Nov</b> Walk / Walk 10:00 Run</p>
	<p>10:30 <b>Prem Jww</b> Walk Run</p>	
	<p>11:45 <b>Prem Std</b> Walk Run</p>	<p>11:40 <b>T2B</b> Walk / Walk Run</p>
	<p>12:00 <b>Exc Std</b> Walk 24-20 Run 24-20</p>	<p>12:50 <b>Nov Jww</b> Walk Run</p>
	<p>1:50 Walk 16 Run 16</p>	
	<p>2:25 Walk 12-4 Run 12-4</p>	<p>1:45 <b>Open Jww</b> Walk Run</p>
	<p>3:35 <b>Open Std</b> Walk Run</p>	<p>2:40 <b>Exc Jww</b> Walk 24-20 Run 24-20</p>
	<p>4:30 <b>Novice Std</b> Walk Run</p>	<p>3:20 Walk 16 Run 16</p>
<p>4:50 Done</p>	<p>3:50 Walk 12-4 Run 12-4</p>	
	<p>4:20 Done</p>	

# Saturday

## 9:00 AM start

Small to Tall

First time in each ring is accurate, all others are estimates. Plan to be at the trial site well before the listed time in case we run early.

9:30 **Prm Jww**  
Walk  
Run

10:40 **Prm Std**  
Walk  
Run

11:50 **Exc Std**  
Walk 4-12  
Run 4-12

12:35 Walk 16  
Run 16

1:15 Walk 20-24  
Run 20-24

2:20 **Open Std**  
Walk  
Run

3:20 **Novice Std**  
Walk  
Run

3:35 Done

9:00 **Fast Exc/Opn/Nov**  
Walk / Walk  
Run

10:30 **T2B**  
Walk / Walk  
Run

11:40 **Nov Jww**  
Walk  
Run

12:30 **Open Jww**  
Walk  
Run

1:25 **Exc Jww**  
Walk 4-12  
Run 4-12

2:00 Walk 16  
Run 16

2:35 Walk 20-24  
Run 20-24

3:00 Done

# Sunday

## 9:00 AM start

Tall to Small

First time in each ring is accurate, all others are estimates. Plan to be at the trial site well before the listed time in case we run early.

9:30 **Prm Jww**  
Walk  
Run

10:40 **Prm Std**  
Walk  
Run

11:50 **Exc Std**  
Walk 24-20  
Run 24-20

12:45 Walk 16  
Run 16

1:20 Walk 12-4  
Run 12-4

2:35 **Open Std**  
Walk  
Run

3:20 **Novice Std**  
Walk  
Run

3:40 Done

9:00 **Fast Exc/Opn/Nov**  
Walk / Walk  
Run

10:30 **T2B**  
Walk / Walk  
Run

11:40 **Nov Jww**  
Walk  
Run

12:30 **Open Jww**  
Walk  
Run

1:20 **Exc Jww**  
Walk 24-20  
Run 24-20

2:00 Walk 16  
Run 16

2:30 Walk 12-4  
Run 12-4

3:00 Done







# Sunday – 339 runs

STD		NOV										
Division	4	8	12	16	20	24	24C	14	18	Judge	Ring	
NOV B			1		3					Torka Poet	1	
NOV P					2					Torka Poet	1	
NOV			1		5					<b>TOTAL RUNS</b>	6	
STD		OPN										
Division	4	8	12	16	20	24	24C	14	18	Judge	Ring	
OPEN		1			6	1	1			Torka Poet	1	
OPEN P					1					Torka Poet	1	
OPN		1			7	1	1			<b>TOTAL RUNS</b>	10	
STD		EXC										
Division	4	8	12	16	20	24	24C	14	18	Judge	Ring	
EX		1	2	1	3	2				Torka Poet	1	
EX P			1	3	3					Torka Poet	1	
MAS		8	8	3	9	7				Torka Poet	1	
MAS P	2	2	6	13	6					Torka Poet	1	
EXC	2	11	17	20	21	9				<b>TOTAL RUNS</b>	80	
STD		PREM										
Division	4	8	12	16	20	24	24C	14	18	Judge	Ring	
PRM		5	2	2	7	2	1			Torka Poet	1	
PRM P	2		1	2	4					Torka Poet	1	
PREM	2	5	3	4	11	2	1			<b>TOTAL RUNS</b>	28	
JWW		NOV										
Division	4	8	12	16	20	24	24C	14	18	Judge	Ring	
NOV B		1	2	2	4	1				Geoff Teare	2	
NOV P		1		1	3					Geoff Teare	2	
NOV		2	2	3	7	1				<b>TOTAL RUNS</b>	15	
JWW		OPN										
Division	4	8	12	16	20	24	24C	14	18	Judge	Ring	
OPEN				1	7	2	1			Geoff Teare	2	
OPEN P					1					Geoff Teare	2	
OPN				1	8	2	1			<b>TOTAL RUNS</b>	12	
JWW		EXC										
Division	4	8	12	16	20	24	24C	14	18	Judge	Ring	
EX		1	2		2	3				Geoff Teare	2	
EX P			1	3	1					Geoff Teare	2	
MAS		9	8	4	9	7				Geoff Teare	2	
MAS P	2	2	5	14	7					Geoff Teare	2	
EXC	2	12	16	21	19	10				<b>TOTAL RUNS</b>	80	
JWW		PREM										
Division	4	8	12	16	20	24	24C	14	18	Judge	Ring	
PRM		3		3	6	2	1			Torka Poet	1	
PRM P	1		2	4	2					Torka Poet	1	
PREM	1	3	2	7	8	2	1			<b>TOTAL RUNS</b>	24	
FAST		NOV										
Division	4	8	12	16	20	24	24C	14	18	Judge	Ring	
NOV A		1								Geoff Teare	2	
NOV B		1		1	2					Geoff Teare	2	
NOV P		1	1	3						Geoff Teare	2	
NOV		3	1	4	2					<b>TOTAL RUNS</b>	10	
FAST		OPN										
Division	4	8	12	16	20	24	24C	14	18	Judge	Ring	
OPEN			1		1	1				Geoff Teare	2	
OPEN P					2					Geoff Teare	2	
OPN			1		3	1				<b>TOTAL RUNS</b>	5	
FAST		EXC										
Division	4	8	12	16	20	24	24C	14	18	Judge	Ring	
EX			1		2					Geoff Teare	2	
EX P			1	2	1					Geoff Teare	2	
MAS		2	2	1	7	5				Geoff Teare	2	
MAS P	1	1	1	2	1					Geoff Teare	2	
EXC	1	3	5	5	9	7				<b>TOTAL RUNS</b>	30	
T2B		T2B										
Division	4	8	12	16	20	24	24C	14	18	Judge	Ring	
PREF	3		4	5	6					Geoff Teare	2	
REG		2	3	3	10	3				Geoff Teare	2	
T2B	3	2	7	8	16	3				<b>TOTAL RUNS</b>	39	
<b>Judge Totals</b>										<b>Ring Totals</b>		
<b>Torka Poet</b>		148								<b>Ring 1</b>	148	
<b>Geoff Teare</b>		191								<b>Ring 2</b>	191	