

THANK YOU for COMING to the SHOW!!!!
Washington State Obedience and Training Club
Running Order and Class Information July 12-14, 2024

Fun Fur Paws – Mt. Vernon, WA

I-5 North/South: Take Exit #218 (Starbird Rd) and East (Southbound turn left, Northbound turn right). Continue East to the 4-way stop at Bulson Rd and turn left. Follow Bulson Rd. to the intersection with Tye Rd (0.7 mi). Turn left and then after a short distance, turn right onto Stargate Place (look for the sign for Fun Fur Paws). Follow the road to the arena and parking.

Judge: Marianne Diehl & Dan Butcher

Class Schedule: See charts below: **Start 10:00 AM Friday – 9:00 AM Weekend**

Opening/Closing: Opened 5/29, closed 7/5

Walkthroughs: We will split walkthrus as needed. See the charts below for details.

Veterinarian: 24 Hour Pet Emergency Center, 14434 Avon Allen Rd., Mt. Vernon, WA 360-848-5911
Chuckanut Valley Veterinarian (staffed 24/7), 896 N. Burlington Rd., Burlington, WA 360-757-3722

Moveups: The deadline for moveups is 7/8. Moveups must be received in writing or email by that deadline. Day-to-Day moveups are being accepted for Saturday and Sunday.

Setup and crating: Limited crating in the stalls only.
With the potential of high temperatures we have been given the privilege of using the stalls for this trial. The stall must be shared with anyone who needs to get their dogs out of their car. Disruptive dogs will be asked to be removed. The stall fee for the weekend will be \$15.00 (one person from each stall should collect) checks made out to FFP all monies can be given to Linda Shea at the trial.

If you would like to reserve a stall please contact Linda at lindashea@walp.us. You will be sent a confirmation of your request.

Pop-up tents and crating is available along the West fence and North grass areas. If you are crating from your car, make sure to leave windows/doors open for air flow. If using a pop-up or crate on the grass, please do NOT use mats or leave items overnight.

RVs: Overnight RV camping is limited and must be reserved. Email r2agility@gmail.com with questions.

Food: We will NOT be providing any food, snacks or refreshments at the show. Please bring your own provisions 😊

Workers: We STILL need your help putting on the show. If you can help out for a class – or a day – let us know. We'll have a chief worker person coordinating thing and likely have the white boards setup like usual. THANKS!

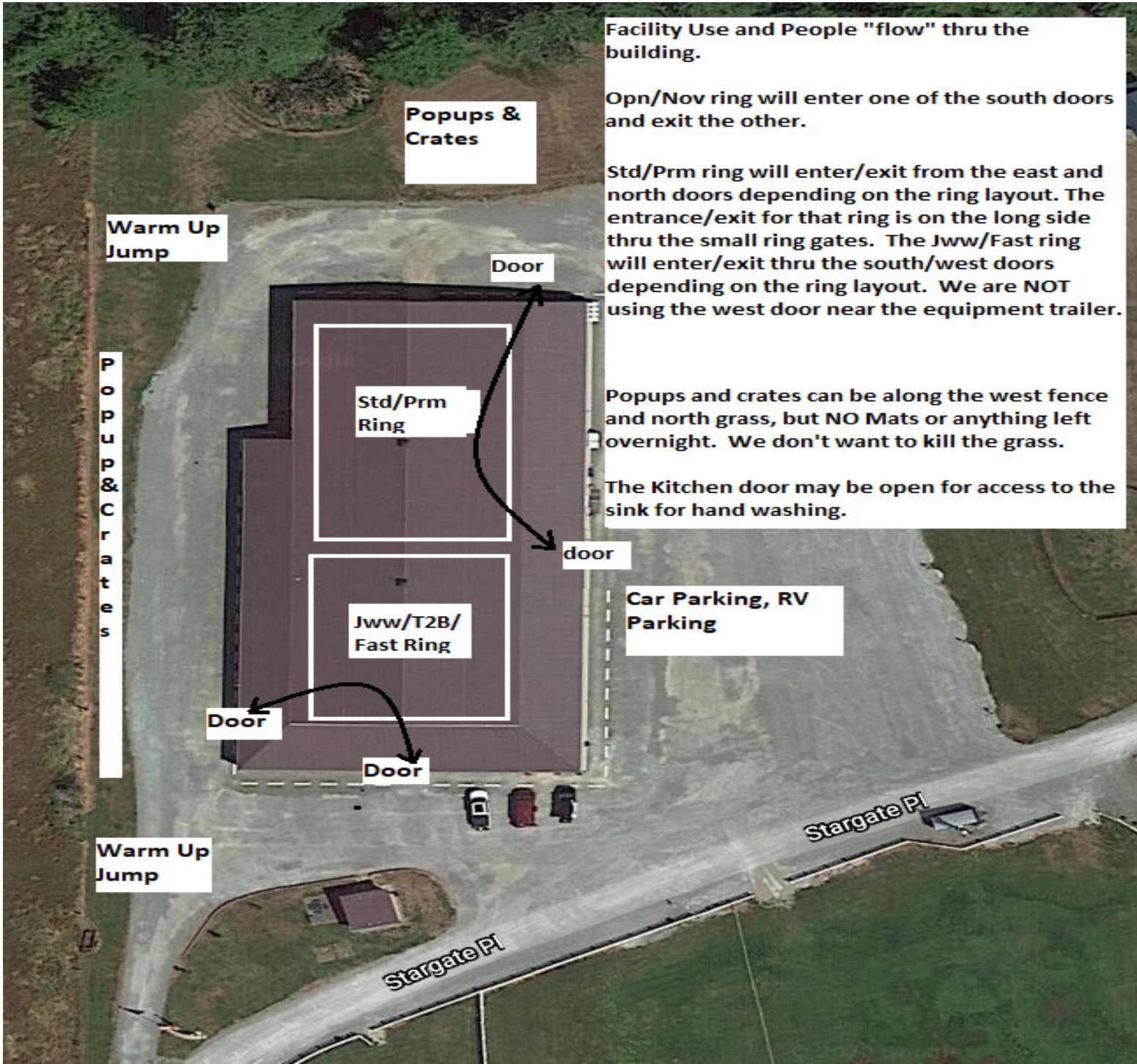
Measuring: A volunteer measuring official will be on site. Check with the score table for more info.

Important Housekeeping Info

Please use the exercise fields or the grassy areas around the parking lot to walk your dog. The fenced agility fields are off limits. Please pick up after your dog. If your dog accidentally relieves itself on the building structure, please use the cleaning sprays provided by Fun Fur Paws.

Pull-in parking around the building ONLY. Do NOT back in to park around the building. If you do, you will be required to re-park.

5 MPH Speed Limit at Fun Fur Paws



Facility Use and People "flow" thru the building.

Opn/Nov ring will enter one of the south doors and exit the other.

Std/Prm ring will enter/exit from the east and north doors depending on the ring layout. The entrance/exit for that ring is on the long side thru the small ring gates. The Jww/Fast ring will enter/exit thru the south/west doors depending on the ring layout. We are NOT using the west door near the equipment trailer.

Popups and crates can be along the west fence and north grass, but NO Mats or anything left overnight. We don't want to kill the grass.

The Kitchen door may be open for access to the sink for hand washing.

Car Parking, RV Parking

Warm Up Jump

P o p u p & C r a t e s

Popups & Crates

Door

Std/Prm Ring

Jww/T2B/Fast Ring

door

Door

Door

Warm Up Jump

Stargate Pl

Stargate Pl

Go To
www.r2agility.net
for Check-In, Running Order, and Maps

Course Maps: We will not be providing general paper copies of course maps. Maps will be made available on our website – www.r2agility.net sometime after **midnight**. **Judges are not allowed to send us maps until after midnight** and we will make every effort to email/post them by 7:30 AM. Maps will be posted at a couple of places around the arena.

Gate Check-in: We will have a normal gate steward with a paper gate sheet and may be using an electronic gate checking and monitoring system available by any internet enabled device with a web browser.

The system allows you to check-in, mark conflict or absent, see progress, and live scores as they are entered into the computer. Please check the status to make sure your runs are correct.

Maps will also be available on the same page sometime after 7:30 AM.

Results: Results will be posted in the arena and will be available on the same web page as the running order.

	Ring 1	Ring 2
<p>Friday 10:00 AM start</p> <p>Tall to Small</p> <p>First time in each ring is accurate, all others are estimates. Plan to be at the trial site well before the listed time in case we run early.</p>	<p>10:30 Prm Jww Walk Run</p> <p>11:30 Prm Std Walk Run</p> <p>12:30 Exc Std Walk 24-20 Run 24-20</p> <p>1:15 Walk 16 Run 16</p> <p>1:45 Walk 12-4 Run 12-4</p> <p>2:50 Open Std Walk Run</p> <p>3:40 Novice Std Walk Run</p> <p>4:00 Done</p>	<p>Fast Exc/Opn/Nov Walk 24-20 Walk 16-4 10:00 Run all heights / classes</p> <p>T2B Walk 24-20 Walk 16-4 11:25 Run</p> <p>Nov Jww Walk 12:35 Run</p> <p>Open Jww Walk 1:20 Run</p> <p>Exc Jww Walk 24-20 Run 24-20 2:10</p> <p>2:45 Walk 16 Run 16</p> <p>3:10 Walk 12-4 Run 12-4</p> <p>3:35 Done</p>

Saturday

9:00 AM start

Small to Tall

First time in each ring is accurate, all others are estimates. Plan to be at the trial site well before the listed time in case we run early.

9:30 **Prm Jww**
Walk
Run

10:35 **Prm Std**
Walk
Run

11:40 **Exc Std**
Walk 4-12
Run 4-12

12:40 Walk 16
Run 16

1:05 Walk 20-24
Run 20-24

2:15 **Open Std**
Walk
Run

3:00 **Novice Std**
Walk
Run

3:25 Done

9:00 **Fast Exc/Opn/Nov**
Walk (4-16)
Walk (20-24)
Run all heights / classes

10:30 **T2B**
Walk (4-16)
Walk (20-24)
Run

11:35 **Nov Jww**
Walk
Run

12:25 **Open Jww**
Walk
Run

1:15 **Exc Jww**
Walk 4-12
Run 4-12

1:55 Walk 16
Run 16

2:20 Walk 20-24
Run 20-24

2:45 Done

Sunday

9:00 AM start

Tall to Small

First time in each ring is accurate, all others are estimates. Plan to be at the trial site well before the listed time in case we run early.

9:30 **Prm Jww**
Walk
Run

10:35 **Prm Std**
Walk
Run

11:45 **Exc Std**
Walk 24-20
Run 24-20

12:30 Walk 16
Run 16

1:00 Walk 12-4
Run 12-4

2:20 **Open Std**
Walk
Run

3:10 **Novice Std**
Walk
Run

3:30 Done

Fast Exc/Opn/Nov
Walk 24-20
Walk 16-4
9:00 Run all heights / classes

T2B
Walk 24-20
Walk 16-4
10:40 Run

Nov Jww
Walk
11:45 Run

Open Jww
Walk
12:35 Run

Exc Jww
Walk 24-20
1:25 Run 24-20

2:05 Walk 16
Run 16

2:35 Walk 12-4
Run 12-4

2:05 Done

TRIAL ENTRY STATISTICS Preliminary running order contingent on move-ups not yet received.

Friday – 290 runs

STD		NOV										
Division	4	8	12	16	20	24	24C	14	18	Judge	Ring	
NOV A		1			1					Dan Butcher	1	
NOV B		1		4						Dan Butcher	1	
NOV P	2			2	1					Dan Butcher	1	
NOV	2	2		6	2					TOTAL RUNS	12	
STD		OPN										
Division	4	8	12	16	20	24	24C	14	18	Judge	Ring	
OPEN				3	4					Dan Butcher	1	
OPEN P		3		1						Dan Butcher	1	
OPN		3		4	4					TOTAL RUNS	11	
STD		EXC										
Division	4	8	12	16	20	24	24C	14	18	Judge	Ring	
EX		2		1	2	4				Dan Butcher	1	
EX P			1		3					Dan Butcher	1	
MAS		6	7	2	8	4				Dan Butcher	1	
MAS P	2	3	5	11	4					Dan Butcher	1	
EXC	2	11	13	14	17	8				TOTAL RUNS	65	
STD		PREM										
Division	4	8	12	16	20	24	24C	14	18	Judge	Ring	
PRM		4	2		4	2				Dan Butcher	1	
PRM P	1		3	2	1					Dan Butcher	1	
PREM	1	4	5	2	5	2				TOTAL RUNS	19	
JWW		NOV										
Division	4	8	12	16	20	24	24C	14	18	Judge	Ring	
NOV A		1			1					Marianne Diehl	2	
NOV B				4						Marianne Diehl	2	
NOV P	1	1	2	2	1					Marianne Diehl	2	
NOV	1	2	2	6	2					TOTAL RUNS	13	
JWW		OPN										
Division	4	8	12	16	20	24	24C	14	18	Judge	Ring	
OPEN				2	4					Marianne Diehl	2	
OPEN P		4	1	2	1					Marianne Diehl	2	
OPN		4	1	4	5					TOTAL RUNS	14	
JWW		EXC										
Division	4	8	12	16	20	24	24C	14	18	Judge	Ring	
EX		2		1	3	2				Marianne Diehl	2	
MAS		6	7	2	7	6				Marianne Diehl	2	
MAS P	2	3	5	10	5					Marianne Diehl	2	
EXC	2	11	12	13	15	8				TOTAL RUNS	61	
JWW		PREM										
Division	4	8	12	16	20	24	24C	14	18	Judge	Ring	
PRM		3	1		3	2				Dan Butcher	1	
PRM P		1	2	3	1					Dan Butcher	1	
PREM		4	3	3	4	2				TOTAL RUNS	16	
FAST		NOV										
Division	4	8	12	16	20	24	24C	14	18	Judge	Ring	
NOV A					1	1				Marianne Diehl	2	
NOV P		2	2	2						Marianne Diehl	2	
NOV		2	2	2	1	1				TOTAL RUNS	8	
FAST		OPN										
Division	4	8	12	16	20	24	24C	14	18	Judge	Ring	
OPEN				2						Marianne Diehl	2	
OPEN P				3	1					Marianne Diehl	2	
OPN				5	1					TOTAL RUNS	6	
FAST		EXC										
Division	4	8	12	16	20	24	24C	14	18	Judge	Ring	
EX		2		1	1					Marianne Diehl	2	
EX P				1						Marianne Diehl	2	
MAS		2	2	1	6	3				Marianne Diehl	2	
MAS P	1		1	2	1					Marianne Diehl	2	
EXC	1	4	3	5	8	3				TOTAL RUNS	24	
T2B		T2B										
Division	4	8	12	16	20	24	24C	14	18	Judge	Ring	
PREF	2	2	3	8	4					Marianne Diehl	2	
REG		4	2	3	9	4				Marianne Diehl	2	
T2B	2	6	5	11	13	4				TOTAL RUNS	41	
Judge Totals										Ring Totals		
Marianne Diehl		167								Ring 1	123	
Dan Butcher		123								Ring 2	167	

Saturday – 322 runs

STD	NOV										
Division	4	8	12	16	20	24	24C	14	18	Judge	Ring
NOV B			1	5	1	2				Marianne Diehl	1
NOV P	1			3	3					Marianne Diehl	1
NOV	1		1	8	4	2				TOTAL RUNS	16
Division	4	8	12	16	20	24	24C	14	18	Judge	Ring
OPEN				1	3					Marianne Diehl	1
OPEN P		3								Marianne Diehl	1
OPN		3		1	3					TOTAL RUNS	7
Division	4	8	12	16	20	24	24C	14	18	Judge	Ring
EX		2		1	2	3	1			Marianne Diehl	1
EX P				1	1	4				Marianne Diehl	1
MAS		7		10	2	10	3			Marianne Diehl	1
MAS P	2	3		5	9	4				Marianne Diehl	1
EXC	2	12		17	12	20	6	1		TOTAL RUNS	70
Division	4	8	12	16	20	24	24C	14	18	Judge	Ring
PRM		3		2	6	3				Marianne Diehl	1
PRM P	1	2		3	5	1				Marianne Diehl	1
PREM	1	5		5	5	7	3			TOTAL RUNS	26
Division	4	8	12	16	20	24	24C	14	18	Judge	Ring
NOV B		1		3	2	1				Dan Butcher	2
NOV P	1	1		2	3					Dan Butcher	2
NOV	1	2		5	5	1				TOTAL RUNS	14
Division	4	8	12	16	20	24	24C	14	18	Judge	Ring
OPEN				2	5					Dan Butcher	2
OPEN P	1	3		1	1					Dan Butcher	2
OPN	1	3		1	3	5				TOTAL RUNS	13
Division	4	8	12	16	20	24	24C	14	18	Judge	Ring
EX		1		1	1	3	2	1		Dan Butcher	2
EX P						1				Dan Butcher	2
MAS		8		11	3	9	5			Dan Butcher	2
MAS P	2	3		7	8	7				Dan Butcher	2
EXC	2	12		19	12	20	7	1		TOTAL RUNS	73
Division	4	8	12	16	20	24	24C	14	18	Judge	Ring
PRM		4		1	2	4	2			Marianne Diehl	1
PRM P		2		3	3	1				Marianne Diehl	1
PREM		6		4	5	5	2			TOTAL RUNS	22
Division	4	8	12	16	20	24	24C	14	18	Judge	Ring
NOV B					2					Dan Butcher	2
NOV P					2	4				Dan Butcher	2
NOV					2	6				TOTAL RUNS	8
Division	4	8	12	16	20	24	24C	14	18	Judge	Ring
OPEN					2	1	1			Dan Butcher	2
OPEN P		2			2	1				Dan Butcher	2
OPN		2			4	2	1			TOTAL RUNS	9
Division	4	8	12	16	20	24	24C	14	18	Judge	Ring
EX					1	1				Dan Butcher	2
EX P		1								Dan Butcher	2
MAS		3		3	1	6				Dan Butcher	2
MAS P	1	1		4	1	3				Dan Butcher	2
EXC	1	5		7	2	10	1			TOTAL RUNS	26
Division	4	8	12	16	20	24	24C	14	18	Judge	Ring
PREF	2	2		3	4	5				Dan Butcher	2
REG		5		3	2	9	3			Dan Butcher	2
T2B	2	7		6	6	14	3			TOTAL RUNS	38
Judge Totals										Ring Totals	
Marianne Diehl		141								Ring 1	141
Dan Butcher		181								Ring 2	181

Sunday – 347 runs

STD		NOV										
Division	4	8	12	16	20	24	24C	14	18	Judge	Ring	
NOV B				4	1	2				Dan Butcher	1	
NOV P			1	3	2					Dan Butcher	1	
NOV			1	7	3	2				TOTAL RUNS	13	
STD		OPN										
Division	4	8	12	16	20	24	24C	14	18	Judge	Ring	
OPEN				1	4					Dan Butcher	1	
OPEN P		4		1						Dan Butcher	1	
OPN		4		2	4					TOTAL RUNS	10	
STD		EXC										
Division	4	8	12	16	20	24	24C	14	18	Judge	Ring	
EX		2	1		3	4	1			Dan Butcher	1	
EX P				1	4					Dan Butcher	1	
MAS		9	10	2	9	4				Dan Butcher	1	
MAS P	2	5	4	14	5					Dan Butcher	1	
EXC	2	16	15	17	21	8	1			TOTAL RUNS	80	
STD		PREM										
Division	4	8	12	16	20	24	24C	14	18	Judge	Ring	
PRM		3	2		5	3				Dan Butcher	1	
PRM P	1	2	3	3	2					Dan Butcher	1	
PREM	1	5	5	3	7	3				TOTAL RUNS	24	
JWW		NOV										
Division	4	8	12	16	20	24	24C	14	18	Judge	Ring	
NOV B				3		1				Marianne Diehl	2	
NOV P	1		1	5	2					Marianne Diehl	2	
NOV	1		1	8	2	1				TOTAL RUNS	13	
JWW		OPN										
Division	4	8	12	16	20	24	24C	14	18	Judge	Ring	
OPEN				2	5					Marianne Diehl	2	
OPEN P		3		3						Marianne Diehl	2	
OPN		3		5	5					TOTAL RUNS	13	
JWW		EXC										
Division	4	8	12	16	20	24	24C	14	18	Judge	Ring	
EX		2	1	2	4	3	1			Marianne Diehl	2	
EX P					3					Marianne Diehl	2	
MAS		9	11	2	8	6				Marianne Diehl	2	
MAS P	2	5	5	14	7					Marianne Diehl	2	
EXC	2	16	17	18	22	9	1			TOTAL RUNS	85	
JWW		PREM										
Division	4	8	12	16	20	24	24C	14	18	Judge	Ring	
PRM		3		1	5	2				Dan Butcher	1	
PRM P		1	3	3	1					Dan Butcher	1	
PREM		4	3	4	6	2				TOTAL RUNS	19	
FAST		NOV										
Division	4	8	12	16	20	24	24C	14	18	Judge	Ring	
NOV B					2					Marianne Diehl	2	
NOV P			1	4	4					Marianne Diehl	2	
NOV			1	4	6					TOTAL RUNS	11	
FAST		OPN										
Division	4	8	12	16	20	24	24C	14	18	Judge	Ring	
OPEN		1		2		1				Marianne Diehl	2	
OPEN P		1		3						Marianne Diehl	2	
OPN		2		5		1				TOTAL RUNS	8	
FAST		EXC										
Division	4	8	12	16	20	24	24C	14	18	Judge	Ring	
EX		1		1	1	1				Marianne Diehl	2	
EX P		1			2					Marianne Diehl	2	
MAS		3	3	1	9	1				Marianne Diehl	2	
MAS P	1	1	2	2	5					Marianne Diehl	2	
EXC	1	6	5	4	17	2				TOTAL RUNS	35	
T2B		T2B										
Division	4	8	12	16	20	24	24C	14	18	Judge	Ring	
PREF	1		1	5	6					Marianne Diehl	2	
REG		5	2	2	8	6				Marianne Diehl	2	
T2B	1	5	3	7	14	6				TOTAL RUNS	36	
Judge Totals										Ring Totals		
Marianne Diehl		201								Ring 1	146	
Dan Butcher		146								Ring 2	201	