

THANK YOU for COMING to the SHOW!!!!!!
Puget Sound Labrador Retriever Association
Running Order and Class Information June 21-23, 2024

Fun Fur Paws – Mt. Vernon, WA

I-5 North/South: Take Exit #218 (Starbird Rd) and East (Southbound turn left, Northbound turn right). Continue East to the 4-way stop at Bulson Rd and turn left. Follow Bulson Rd. to the intersection with Tye Rd (0.7 mi). Turn left and then after a short distance, turn right onto Stargate Place (look for the sign for Fun Fur Paws). Follow the road to the arena and parking.

Judge: **Lori Holdren & Sangie Brooks**

Class Schedule: See charts below: **Start 10:00 AM Friday – 9:00 AM Weekend (9:45 Start PrmJww on Sat)**

Opening/Closing: **Opened 5/8, closed 6/14**

Walkthroughs: We will split walkthrus as needed. See the charts below for details.

Veterinarian: 24 Hour Pet Emergency Center, 14434 Avon Allen Rd., Mt. Vernon, WA 360-848-5911
Chuckanut Valley Veterinarian (staffed 24/7), 896 N. Burlington Rd., Burlington, WA 360-757-3722

Moveups: The deadline for moveups is 6/17/24. Moveups must be received in writing or email by that deadline. Day-to-Day moveups are being accepted for Saturday and Sunday.

Setup and crating: **There is NO general crating allowed in the building at this time.**

Popup tents and crating is available along the West fence and North grass areas. If you are crating from your car, make sure to leave windows/doors open for air flow. If using a popup or crate on the grass, please do NOT use mats or leave items overnight.

RVs: Overnight RV camping is limited and must be reserved. Email cherimlevine@hotmail.com with questions.

Food: We will NOT be providing any food, snacks or refreshments at the show. Please bring your own provisions 😊

Workers: We STILL need your help putting on the show. If you can help out for a class – or a day – let us know. We'll have a chief worker person coordinating thing and likely have the white boards setup like usual. THANKS!

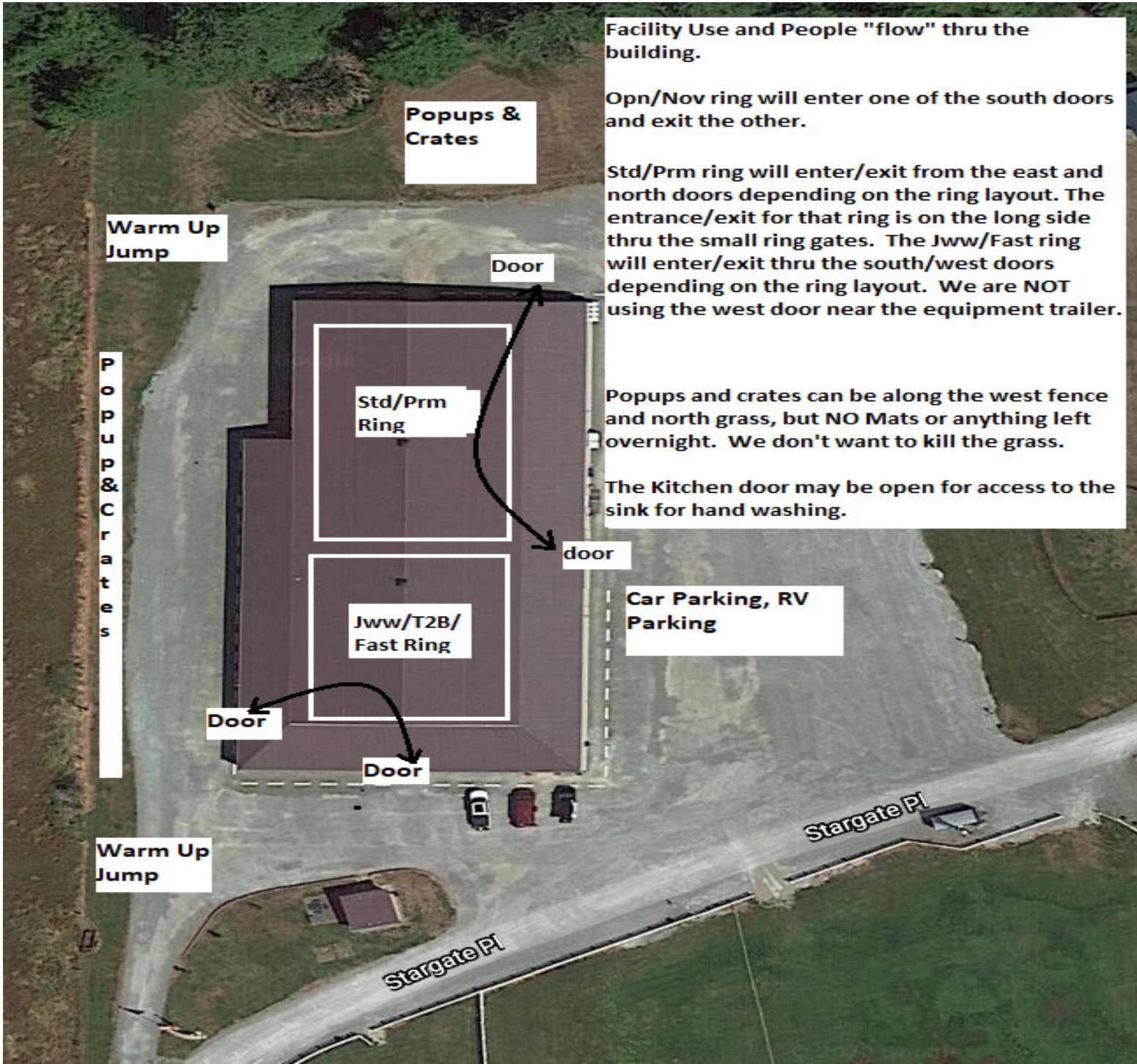
Measuring: A volunteer measuring official will be on site. Check with the score table for more info.

Important Housekeeping Info

Please use the exercise fields or the grassy areas around the parking lot to walk your dog. The fenced agility fields are off limits. Please pick up after your dog. If your dog accidentally relieves itself on the building structure, please use the cleaning sprays provided by Fun Fur Paws.

Pull-in parking around the building ONLY. Do NOT back in to park around the building. If you do, you will be required to re-park.

5 MPH Speed Limit at Fun Fur Paws



Facility Use and People "flow" thru the building.

Opn/Nov ring will enter one of the south doors and exit the other.

Std/Prm ring will enter/exit from the east and north doors depending on the ring layout. The entrance/exit for that ring is on the long side thru the small ring gates. The Jww/Fast ring will enter/exit thru the south/west doors depending on the ring layout. We are NOT using the west door near the equipment trailer.

Popups and crates can be along the west fence and north grass, but NO Mats or anything left overnight. We don't want to kill the grass.

The Kitchen door may be open for access to the sink for hand washing.

Warm Up Jump

Popups & Crates

P
o
p
u
p
&
C
r
a
t
e
s

Door

Std/Prm Ring

Jww/T2B/
Fast Ring

door

Car Parking, RV Parking

Door

Door

Warm Up Jump

Stargate Pl

Stargate Pl

Go To
www.r2agility.net
for Check-In, Running Order, and Maps

Course Maps: We will not be providing general paper copies of course maps. Maps will be made available on our website – www.r2agility.net sometime after **midnight**. **Judges are not allowed to send us maps until after midnight** and we will make every effort to email/post them by 7:30 AM. Maps will be posted at a couple of places around the arena.

Gate Check-in: We will have a normal gate steward with a paper gate sheet and may be using an electronic gate checking and monitoring system available by any internet enabled device with a web browser.

The system allows you to check-in, mark conflict or absent, see progress, and live scores as they are entered into the computer. Please check the status to make sure your runs are correct.

Maps will also be available on the same page sometime after 7:30 AM.

Results: Results will be posted in the arena and will be available on the same web page as the running order.

	Ring 1	Ring 2
<p>Friday 10:00 AM start</p> <p>Tall to Small</p> <p>First time in each ring is accurate, all others are estimates. Plan to be at the trial site well before the listed time in case we run early.</p>	<p>Prm Jww Walk 10:30 Run</p> <p>Prm Std Walk 11:30 Run</p> <p>Exc Std Walk 24-20 12:40 Run 24-20</p> <p>Walk 16 1:40 Run 16</p> <p>Walk 12-4 2:15 Run 12-4</p> <p>Open Std Walk 3:00 Run</p> <p>Novice Std Walk 4:00 Run</p> <p>4:25 Done</p>	<p>Fast Exc/Opn/Nov Walk 10:00 Run all heights / classes</p> <p>T2B Walk 11:30 Run</p> <p>Nov Jww Walk 12:45 Run</p> <p>Open Jww Walk 1:45 Run</p> <p>Exc Jww Walk 24-20 2:30 Run 24-20</p> <p>Walk 16 3:15 Run 16</p> <p>Walk 12-4 3:40 Run 12-4</p> <p>3:55 Done</p>

Saturday

9:00 AM start

Small to Tall

First time in each ring is accurate, all others are estimates. Plan to be at the trial site well before the listed time in case we run early.

Prm Jww
Walk
9:45 Run

Prm Std
Walk
11:00 Run

Parade of Dogs in Nov Jww Ring

Exc Std
Walk 4-12
12:30 Run 4-12

1:15 Walk 16
Run 16

1:55 Walk 20-24
Run 20-24

Open Std
Walk
3:10 Run

Novice Std
Walk
3:55 Run

4:10 Done

Fast Exc/Opn/Nov
Walk (4-16)
Walk (20-24)
9:00 Run all heights / classes

T2B
Walk (4-16)
Walk (20-24)
10:45 Run

Parade of Dogs in Nov Jww Ring

Nov Jww
Walk
12:30 Run

Open Jww
Walk
1:15 Run

Exc Jww
Walk 4-12
2:00 Run 4-12

2:30 Walk 16
Run 16

3:00 Walk 20-24
Run 20-24

3:40 Done

Sunday

9:00 AM start

Tall to Small

First time in each ring is accurate, all others are estimates. Plan to be at the trial site well before the listed time in case we run early.

9:30 **Prm Jww**
Walk
Run

10:40 **Prm Std**
Walk
Run

12:00 **Exc Std**
Walk 24-20
Run 24-20

1:00 Walk 16
Run 16

1:45 Walk 12-4
Run 12-4

2:50 **Open Std**
Walk
Run

3:30 **Novice Std**
Walk
Run

3:50 Done

Fast Exc/Opn/Nov
Walk
9:00 Run all heights / classes

10:40 **T2B**
Walk
Run

11:50 **Nov Jww**
Walk
Run

12:40 **Open Jww**
Walk
Run

1:25 **Exc Jww**
Walk 24-20
Run 24-20

2:15 Walk 16
Run 16

2:55 Walk 12-4
Run 12-4

3:20 Done

TRIAL ENTRY STATISTICS *Preliminary running order contingent on move-ups not yet received.*

Friday – 326 runs

STD	NOV									Judge	Ring
Division	4	8	12	16	20	24	24C	14	18	Sangie Brooks	1
NOV A		1		2	1					Sangie Brooks	1
NOV B		1	1	1	2					Sangie Brooks	1
NOV P	2		1	4	2					Sangie Brooks	1
NOV STD	2	2	2	7	5					TOTAL RUNS	18
Division	4	8	12	16	20	24	24C	14	18	Judge	Ring
OPEN				1	2	1				Sangie Brooks	1
OPEN P				2	1					Sangie Brooks	1
OPN				3	3	1				TOTAL RUNS	7
Division	4	8	12	16	20	24	24C	14	18	Judge	Ring
EX		1		2	2	2				Sangie Brooks	1
EX P			1	1						Sangie Brooks	1
MAS		2	6	1	8	8	1			Sangie Brooks	1
MAS P	1	2	4	13	8					Sangie Brooks	1
EXC	1	5	11	17	18	10	1			TOTAL RUNS	63
Division	4	8	12	16	20	24	24C	14	18	Judge	Ring
PRM		3	2		5	4	1			Sangie Brooks	1
PRM P	1		2	4	5					Sangie Brooks	1
PREM	1	3	4	4	10	4	1			TOTAL RUNS	27
Division	4	8	12	16	20	24	24C	14	18	Judge	Ring
NOV A		1		3	1	1				Lori Holdren	2
NOV B			1	2	1					Lori Holdren	2
NOV P	2	1	2	7	3					Lori Holdren	2
NOV JWW	2	2	3	12	5	1				TOTAL RUNS	25
Division	4	8	12	16	20	24	24C	14	18	Judge	Ring
OPEN		1		1	4	1				Lori Holdren	2
OPEN P	1		1	2						Lori Holdren	2
OPN	1	1	1	3	4	1				TOTAL RUNS	11
Division	4	8	12	16	20	24	24C	14	18	Judge	Ring
EX				1	3	1				Lori Holdren	2
EX P				1						Lori Holdren	2
MAS		3	7	1	7	9	1			Lori Holdren	2
MAS P	1	2	4	13	7					Lori Holdren	2
EXC	1	5	11	16	17	10	1			TOTAL RUNS	61
Division	4	8	12	16	20	24	24C	14	18	Judge	Ring
PRM		3	1		7	1	1			Sangie Brooks	1
PRM P	1		1	4	4					Sangie Brooks	1
PREM	1	3	2	4	11	1	1			TOTAL RUNS	23
Division	4	8	12	16	20	24	24C	14	18	Judge	Ring
NOV A		1				1				Lori Holdren	2
NOV B		1		1	1					Lori Holdren	2
NOV P			1	5						Lori Holdren	2
NOV FAST		2	1	6	1	1				TOTAL RUNS	11
Division	4	8	12	16	20	24	24C	14	18	Judge	Ring
OPEN				1	1	1				Lori Holdren	2
OPEN P		1		1	3					Lori Holdren	2
OPN		1		2	4	1				TOTAL RUNS	8
Division	4	8	12	16	20	24	24C	14	18	Judge	Ring
EX					1	1				Lori Holdren	2
EX P				2	2					Lori Holdren	2
MAS		2	3	1	5	5				Lori Holdren	2
MAS P	1	1	1	3	1					Lori Holdren	2
EXC	1	3	4	6	9	6				TOTAL RUNS	29
Division	4	8	12	16	20	24	24C	14	18	Judge	Ring
PREF	2	1	3	9	6					Lori Holdren	2
REG		4	2	4	8	4				Lori Holdren	2
T2B	2	5	5	13	14	4				TOTAL RUNS	43
Judge Totals										Ring Totals	
Lori Holdren		188								Ring 1	138
Sangie Brooks		138								Ring 2	188

Saturday – 353 runs

STD	NOV										
Division	4	8	12	16	20	24	24C	14	18	Judge	Ring
NOV A					1					Lori Holdren	1
NOV B			1	1	4	2				Lori Holdren	1
NOV P	1			2	1					Lori Holdren	1
NOV	1		1	3	6	2				TOTAL RUNS	13
Division	4	8	12	16	20	24	24C	14	18	Judge	Ring
OPN					2	2				Lori Holdren	1
OPN P		1		1						Lori Holdren	1
OPN		1		3	2					TOTAL RUNS	6
Division	4	8	12	16	20	24	24C	14	18	Judge	Ring
EX		1	2	3	1	3	1			Lori Holdren	1
EX P				1	2					Lori Holdren	1
MAS		5	7	4	9	9	1			Lori Holdren	1
MAS P	1	2	5	16	6					Lori Holdren	1
EXC	1	8	14	24	18	12	2			TOTAL RUNS	79
Division	4	8	12	16	20	24	24C	14	18	Judge	Ring
PRM		4	3	2	4	5				Lori Holdren	1
PRM P	1		2	6	3					Lori Holdren	1
PRM	1	4	5	8	7	5				TOTAL RUNS	30
Division	4	8	12	16	20	24	24C	14	18	Judge	Ring
NOV A					1					Sangie Brooks	2
NOV B				2	2	1				Sangie Brooks	2
NOV P	1		3	1						Sangie Brooks	2
NOV	1		5	4	1					TOTAL RUNS	11
Division	4	8	12	16	20	24	24C	14	18	Judge	Ring
OPEN			1	4	3					Sangie Brooks	2
OPEN P			1	2						Sangie Brooks	2
OPN			2	6	3					TOTAL RUNS	11
Division	4	8	12	16	20	24	24C	14	18	Judge	Ring
EX			3	2	1	3	1			Sangie Brooks	2
EX P				1						Sangie Brooks	2
MAS		6	8	4	9	10	1			Sangie Brooks	2
MAS P	2	2	5	14	7					Sangie Brooks	2
EXC	2	8	16	21	17	13	2			TOTAL RUNS	79
Division	4	8	12	16	20	24	24C	14	18	Judge	Ring
PRM		4	1	3	5	1	1			Lori Holdren	1
PRM P	1		2	5	2					Lori Holdren	1
PRM	1	4	3	8	7	1	1			TOTAL RUNS	25
Division	4	8	12	16	20	24	24C	14	18	Judge	Ring
NOV A					1					Sangie Brooks	2
NOV B		2		1		1				Sangie Brooks	2
NOV P	1		3	2						Sangie Brooks	2
NOV	1	2	4	3	1					TOTAL RUNS	11
Division	4	8	12	16	20	24	24C	14	18	Judge	Ring
OPEN				2						Sangie Brooks	2
OPEN P		1	1							Sangie Brooks	2
OPN		1	1	2						TOTAL RUNS	4
Division	4	8	12	16	20	24	24C	14	18	Judge	Ring
EX				1	2	2				Sangie Brooks	2
EX P				3	1					Sangie Brooks	2
MAS		3	3	2	5	6				Sangie Brooks	2
MAS P	1		3	5	3					Sangie Brooks	2
EXC	1	3	6	11	11	8				TOTAL RUNS	40
Division	4	8	12	16	20	24	24C	14	18	Judge	Ring
PREF	2	1	5	10	2					Sangie Brooks	2
REG		5	5	3	6	5				Sangie Brooks	2
T2B	2	6	10	13	8	5				TOTAL RUNS	44
Judge Totals										Ring Totals	
Lori Holdren										Ring 1	153
Sangie Brooks										Ring 2	200

Sunday – 378 runs

STD	NOV										
Division	4	8	12	16	20	24	24C	14	18	Judge	Ring
NOV A		1		1	1					Sangie Brooks	1
NOV B		1	1	2		2				Sangie Brooks	1
NOV P	1		1	4						Sangie Brooks	1
NOV	1	2	2	7	1	2				TOTAL RUNS	15
Division	4	8	12	16	20	24	24C	14	18	Judge	Ring
OPEN				1	3					Sangie Brooks	1
OPEN P				2						Sangie Brooks	1
OPN				3	3					TOTAL RUNS	6
Division	4	8	12	16	20	24	24C	14	18	Judge	Ring
EX		1	2	3	4	2	1			Sangie Brooks	1
EX P				1	2					Sangie Brooks	1
MAS		5	9	4	13	8				Sangie Brooks	1
MAS P	2	2	3	16	11					Sangie Brooks	1
EXC	2	8	14	24	30	10	1			TOTAL RUNS	89
Division	4	8	12	16	20	24	24C	14	18	Judge	Ring
PRM		4	4	2	4	2				Sangie Brooks	1
PRM P	1		2	5	5					Sangie Brooks	1
PREM	1	4	6	7	9	2				TOTAL RUNS	29
Division	4	8	12	16	20	24	24C	14	18	Judge	Ring
NOV A		1		1	1					Lori Holdren	2
NOV B			1	1	1	1				Lori Holdren	2
NOV P	1		1	5	1					Lori Holdren	2
NOV	1	1	2	7	3	1				TOTAL RUNS	15
Division	4	8	12	16	20	24	24C	14	18	Judge	Ring
OPEN		1		4	3					Lori Holdren	2
OPEN P				1						Lori Holdren	2
OPN		1		5	3					TOTAL RUNS	9
Division	4	8	12	16	20	24	24C	14	18	Judge	Ring
EX			2	4	5	2	1			Lori Holdren	2
EX P				1						Lori Holdren	2
MAS		6	10	4	12	9				Lori Holdren	2
MAS P	2	2	3	16	11					Lori Holdren	2
EXC	2	8	15	25	28	11	1			TOTAL RUNS	90
Division	4	8	12	16	20	24	24C	14	18	Judge	Ring
PRM		3	2	3	7	1				Sangie Brooks	1
PRM P	1		2	5	4					Sangie Brooks	1
PREM	1	3	4	8	11	1				TOTAL RUNS	28
Division	4	8	12	16	20	24	24C	14	18	Judge	Ring
NOV A			1		1					Lori Holdren	2
NOV B					1	1				Lori Holdren	2
NOV P			1	3	2					Lori Holdren	2
NOV			2	3	4	1				TOTAL RUNS	10
Division	4	8	12	16	20	24	24C	14	18	Judge	Ring
OPEN				2	1					Lori Holdren	2
OPEN P					1					Lori Holdren	2
OPN				2	2					TOTAL RUNS	4
Division	4	8	12	16	20	24	24C	14	18	Judge	Ring
EX				1	2	1				Lori Holdren	2
EX P				2	2					Lori Holdren	2
MAS		3	3	2	9	5				Lori Holdren	2
MAS P	1		1	3	3					Lori Holdren	2
EXC	1	3	4	8	16	6				TOTAL RUNS	38
Division	4	8	12	16	20	24	24C	14	18	Judge	Ring
PREF	2	1	1	8	6					Lori Holdren	2
REG		4	5	4	10	4				Lori Holdren	2
T2B	2	5	6	12	16	4				TOTAL RUNS	45
Judge Totals										Ring Totals	
Lori Holdren		211								Ring 1	167
Sangie Brooks		167								Ring 2	211