

# THANK YOU for COMING to the SHOW!!!!!!

Evergreen Afghan Hound Club

Running Order and Class Information Oct 28-30, 2022

## *Fun Fur Paws – Mt. Vernon, WA*

**I-5 North/South:** Take Exit #218 (Starbird Rd) and East (Southbound turn left, Northbound turn right). Continue East to the 4-way stop at Bulson Rd and turn left. Follow Bulson Rd. to the intersection with Tye Rd (0.7 mi). Turn left and then after a short distance, turn right onto Stargate Place (look for the sign for Fun Fur Paws). Follow the road to the arena and parking.

**Judge:** Debby Wheeler & Mark Sjogren

**Class Schedule:** See charts below: Start 10:00 AM Friday – 9:00 AM Weekend

**Opening/Closing:** Opened 9/14, closed 10/21

**Walkthroughs:** See the charts below for details. We will split walkthrus as needed and may do a walk/walk/run for FAST and T2B if the situation warrants a split walkthru.

**Veterinarian:** 24 Hour Pet Emergency Center, 14434 Avon Allen Rd., Mt. Vernon, WA 360-848-5911  
Chuckanut Valley Veterinarian (staffed 24/7), 896 N. Burlington Rd., Burlington, WA 360-757-3722

**Moveups:** The deadline for moveups is 10/24/22. Moveups must be received in writing or email by that deadline. Day-to-Day moveups are being accepted for Saturday and Sunday.

**Setup and crating:** There is **NO general crating allowed in the building at this time due to current COVID restrictions by the state.**

**Popup tents and crating is available along the West fence and North grass areas. If you are crating from your car, make sure to leave windows/doors open for air flow. If using a popup or crate on the grass, please do NOT use mats or leave items overnight.**

**RVs:** Overnight RV camping is limited and must be reserved. Email Robin at r2agility @ gmail.com.

**Food:** The Club is not planning on providing any food, snacks or refreshments at the show. Please bring your own provisions 😊

**Workers:** If you can help out for a class – or a day – let us know. We'll have a chief worker person coordinating things and have the white boards setup like usual. THANKS!

**Measuring:** A volunteer measuring official will be on site, check with the score table for more info.

# Howl-O-Ween Saturday after the last run.

See the flyer attached to the running order email or link  
at [r2agilityonline.com](http://r2agilityonline.com)

Go To  
[www.r2agility.net](http://www.r2agility.net)  
for Check-In, Running Order, and Maps

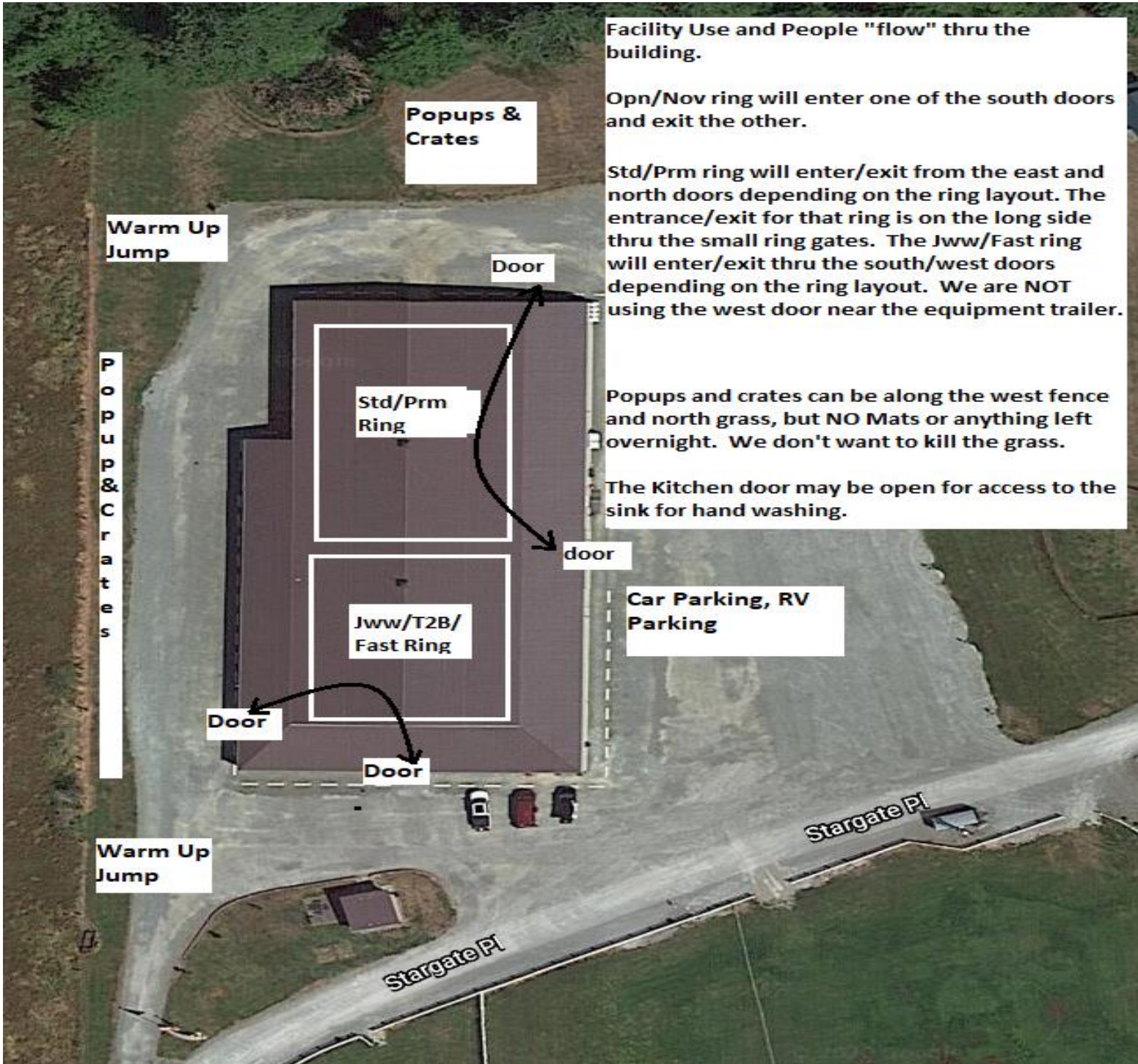
- Course Maps:** We will not be providing general paper copies of course maps. Maps will be made available on our website – [www.r2agility.net](http://www.r2agility.net) sometime after **midnight**. **Judges are not allowed to send us maps until after midnight** and we will make every effort to email/post them by 7:30 AM. Maps will be posted at a couple of places around the arena.
- Gate Check-in:** We will have a normal gate steward with a paper gate sheet and may be using an electronic gate checking and monitoring system available by any internet enabled device with a web browser.
- The system allows you to check-in, mark conflict or absent, see progress, and live scores as they are entered into the computer. Please check the status to make sure your runs are correct.
- Maps will also be available on the same page sometime after 7:30 AM.
- Results:** Results will be posted in the arena and will be available on the same web page as the running order.

**Important Housekeeping Info**

Please use the exercise fields or the grassy areas around the parking lot to walk your dog. Please pick up after your dog. If your dog accidentally relieves itself on the building structure, please use the cleaning sprays provided by Fun Fur Paws.

**Pull-in parking around the building ONLY. Do NOT back in to park around the building. If you do, you will be required to re-park.**

**5 MPH Speed Limit at Fun Fur Paws**



Facility Use and People "flow" thru the building.

Opn/Nov ring will enter one of the south doors and exit the other.

Std/Prm ring will enter/exit from the east and north doors depending on the ring layout. The entrance/exit for that ring is on the long side thru the small ring gates. The Jww/Fast ring will enter/exit thru the south/west doors depending on the ring layout. We are NOT using the west door near the equipment trailer.

Popups and crates can be along the west fence and north grass, but NO Mats or anything left overnight. We don't want to kill the grass.

The Kitchen door may be open for access to the sink for hand washing.

Warm Up Jump

Popups & Crates

P  
o  
p  
u  
p  
&  
C  
r  
a  
t  
e  
s

Door

Std/Prm Ring

Jww/T2B/  
Fast Ring

door

Car Parking, RV Parking

Door

Door

Warm Up Jump

Stargate Pl

Stargate Pl

	Ring 1	Ring 2
<p><b>Friday</b> <b>10:00 AM start</b></p> <p>Small to Tall</p> <p>First time in each ring is accurate, all others are estimates. Plan to be at the trial site well before the listed time in case we run early.</p>	<p><b>10:30</b>    <b>Prm Jww</b> Walk Run</p> <p><b>11:30</b>    <b>Prm Std</b> Walk Run</p> <p><b>12:35</b>    <b>Exc Std</b> Walk 4-12 Run 4-12</p> <p><b>1:35</b>      Walk 16 Run 16</p> <p><b>2:15</b>      Walk 20-24 Run 20-24</p> <p><b>3:20</b>      <b>Open Std</b> Walk Run</p> <p><b>4:20</b>      <b>Novice Std</b> Walk Run</p> <p><b>4:40</b>      Done</p>	<p><b>10:00</b>    <b>Fast Exc/Opn/Nov</b> Walk Run all heights / classes</p> <p><b>11:30</b>    <b>T2B</b> Walk Run</p> <p><b>12:40</b>    <b>Nov Jww</b> Walk Run</p> <p><b>1:30</b>      <b>Open Jww</b> Walk Run</p> <p><b>2:25</b>      <b>Exc Jww</b> Walk 4-12 Run 4-12</p> <p><b>3:10</b>      Walk 16 Run 16</p> <p><b>3:40</b>      Walk 20-24 Run 20-24</p> <p><b>4:10</b>      Done</p>

# Saturday

## 9:00 AM start

Tall to Small

First time in each ring is accurate, all others are estimates. Plan to be at the trial site well before the listed time in case we run early.

9:30 **Prm Jww**  
Walk  
Run

10:30 **Prm Std**  
Walk  
Run

11:40 **Exc Std**  
Walk 24-20  
Run 24-20

12:30 Walk 16  
Run 16

1:10 Walk 12-4  
Run 12-4

2:30 **Open Std**  
Walk  
Run

3:35 **Novice Std**  
Walk  
Run

4:15 Done

9:00 **Fast Exc/Opn/Nov**  
Walk  
Run all heights / classes

10:30 **T2B**  
Walk  
Run

11:50 **Nov Jww**  
Walk  
Run

12:50 **Open Jww**  
Walk  
Run

1:55 **Exc Jww**  
Walk 24-20  
Run 24-20

2:35 Walk 16  
Run 16

3:10 Walk 12-4  
Run 12-4

3:40 Done

# Sunday

## 9:00 AM start

Small to Tall

First time in each ring is accurate, all others are estimates. Plan to be at the trial site well before the listed time in case we run early.

9:30 **Prm Jww**  
Walk  
Run

10:30 **Prm Std**  
Walk  
Run

11:40 **Exc Std**  
Walk 4-12  
Run 4-12

12:25 Walk 16  
Run 16

1:10 Walk 20-24  
Run 20-24

2:10 **Open Std**  
Walk  
Run

3:00 **Novice Std**  
Walk  
Run

3:35 Done

**Fast Exc/Opn/Nov**  
Walk  
9:00 Run all heights / classes

10:20 **T2B**  
Walk  
Run

11:25 **Nov Jww**  
Walk  
Run

12:15 **Open Jww**  
Walk  
Run

1:10 **Exc Jww**  
Walk 4-12  
Run 4-12

1:55 Walk 16  
Run 16

2:30 Walk 20-24  
Run 20-24

2:45 Done

# TRIAL ENTRY STATISTICS Preliminary running order contingent on move-ups not yet received.

## Friday – 357 runs

STD		NOV										
<b>Division</b>	<b>4</b>	<b>8</b>	<b>12</b>	<b>16</b>	<b>20</b>	<b>24</b>	<b>24C</b>	<b>14</b>	<b>18</b>	<b>Judge</b>	<b>Ring</b>	
NOV A										Mark Sjogren	1	
NOV B				1	2	4				Mark Sjogren	1	
NOV P				3	3					Mark Sjogren	1	
NOV				4	5	5				<b>TOTAL</b>	<b>14</b>	
STD		OPN										
<b>Division</b>	<b>4</b>	<b>8</b>	<b>12</b>	<b>16</b>	<b>20</b>	<b>24</b>	<b>24C</b>	<b>14</b>	<b>18</b>	<b>Judge</b>	<b>Ring</b>	
OPEN		3	1	1	5	5				Mark Sjogren	1	
OPEN P					2					Mark Sjogren	1	
OPN		3	1	1	7	5				<b>TOTAL</b>	<b>17</b>	
STD		EXC										
<b>Division</b>	<b>4</b>	<b>8</b>	<b>12</b>	<b>16</b>	<b>20</b>	<b>24</b>	<b>24C</b>	<b>14</b>	<b>18</b>	<b>Judge</b>	<b>Ring</b>	
EX		1	2		6	4	1			Mark Sjogren	1	
EX P			5	3	2					Mark Sjogren	1	
MAS		10	9	2	8	4				Mark Sjogren	1	
MAS P	1	5	2	16	3					Mark Sjogren	1	
EXC	1	16	18	21	19	8	1			<b>TOTAL</b>	<b>84</b>	
STD		PREM										
<b>Division</b>	<b>4</b>	<b>8</b>	<b>12</b>	<b>16</b>	<b>20</b>	<b>24</b>	<b>24C</b>	<b>14</b>	<b>18</b>	<b>Judge</b>	<b>Ring</b>	
PRM		3	1	2	6	4	2			Mark Sjogren	1	
PRM P			1	3	1					Mark Sjogren	1	
PREM		3	2	5	7	4	2			<b>TOTAL</b>	<b>23</b>	
JWW		NOV										
<b>Division</b>	<b>4</b>	<b>8</b>	<b>12</b>	<b>16</b>	<b>20</b>	<b>24</b>	<b>24C</b>	<b>14</b>	<b>18</b>	<b>Judge</b>	<b>Ring</b>	
NOV A					2	1				Debby Wheeler	2	
NOV B		1		1	2	5				Debby Wheeler	2	
NOV P				1	2					Debby Wheeler	2	
NOV		1		2	6	6				<b>TOTAL</b>	<b>15</b>	
JWW		OPN										
<b>Division</b>	<b>4</b>	<b>8</b>	<b>12</b>	<b>16</b>	<b>20</b>	<b>24</b>	<b>24C</b>	<b>14</b>	<b>18</b>	<b>Judge</b>	<b>Ring</b>	
OPEN		3		1	6	4				Debby Wheeler	2	
OPEN P		1		2	2					Debby Wheeler	2	
OPN		4		3	8	4				<b>TOTAL</b>	<b>19</b>	
JWW		EXC										
<b>Division</b>	<b>4</b>	<b>8</b>	<b>12</b>	<b>16</b>	<b>20</b>	<b>24</b>	<b>24C</b>	<b>14</b>	<b>18</b>	<b>Judge</b>	<b>Ring</b>	
EX		2	2		5	5	1			Debby Wheeler	2	
EX P			4	2	3					Debby Wheeler	2	
MAS		10	10	2	10	3				Debby Wheeler	2	
MAS P	1	5	3	14	4					Debby Wheeler	2	
EXC	1	17	19	18	22	8	1			<b>TOTAL</b>	<b>86</b>	
JWW		PREM										
<b>Division</b>	<b>4</b>	<b>8</b>	<b>12</b>	<b>16</b>	<b>20</b>	<b>24</b>	<b>24C</b>	<b>14</b>	<b>18</b>	<b>Judge</b>	<b>Ring</b>	
PRM		2	1	1	6	3	2			Mark Sjogren	1	
PRM P				1	1					Mark Sjogren	1	
PREM		2	1	2	7	3	2			<b>TOTAL</b>	<b>17</b>	
FAST		NOV										
<b>Division</b>	<b>4</b>	<b>8</b>	<b>12</b>	<b>16</b>	<b>20</b>	<b>24</b>	<b>24C</b>	<b>14</b>	<b>18</b>	<b>Judge</b>	<b>Ring</b>	
NOV A					1					Debby Wheeler	2	
NOV B		1								Debby Wheeler	2	
NOV P				1						Debby Wheeler	2	
NOV		1		1	1					<b>TOTAL</b>	<b>3</b>	
FAST		OPN										
<b>Division</b>	<b>4</b>	<b>8</b>	<b>12</b>	<b>16</b>	<b>20</b>	<b>24</b>	<b>24C</b>	<b>14</b>	<b>18</b>	<b>Judge</b>	<b>Ring</b>	
OPEN				1	1	3				Debby Wheeler	2	
OPEN P				1	3					Debby Wheeler	2	
OPN				2	4	3				<b>TOTAL</b>	<b>9</b>	
FAST		EXC										
<b>Division</b>	<b>4</b>	<b>8</b>	<b>12</b>	<b>16</b>	<b>20</b>	<b>24</b>	<b>24C</b>	<b>14</b>	<b>18</b>	<b>Judge</b>	<b>Ring</b>	
EX		1		1	3	1				Debby Wheeler	2	
EX P		1	1	1						Debby Wheeler	2	
MAS		5	1	1	3	5				Debby Wheeler	2	
MAS P			2	3						Debby Wheeler	2	
EXC		7	4	6	6	6				<b>TOTAL</b>	<b>29</b>	
T2B		T2B										
<b>Division</b>	<b>4</b>	<b>8</b>	<b>12</b>	<b>16</b>	<b>20</b>	<b>24</b>	<b>24C</b>	<b>14</b>	<b>18</b>	<b>Judge</b>	<b>Ring</b>	
PREF	1	3	3	4	5					Debby Wheeler	2	
REG		9	3		6	7				Debby Wheeler	2	
T2B	1	12	6	4	11	7				<b>TOTAL</b>	<b>41</b>	
<b>Judge Totals</b>										<b>Ring Totals</b>		
<b>Mark Sjogren</b>		155								<b>Ring 1</b>	155	
<b>Debby Wheeler</b>		202								<b>Ring 2</b>	202	

# Saturday – 406 runs

STD	NOV												
<b>Division</b>	4	8	12	16	20	24	24C	14	18	<b>Judge</b>	<b>Ring</b>		
NOV A			1			1				Debby Wheeler	1		
NOV B		2		2	7	4				Debby Wheeler	1		
NOV P				2	6					Debby Wheeler	1		
NOV		2	1	4	13	5				<b>TOTAL</b>	25		
<b>Division</b>	4	8	12	16	20	24	24C	14	18	<b>Judge</b>	<b>Ring</b>		
OPEN		2	1	1	7	5				Debby Wheeler	1		
OPEN P	1		1	1	2					Debby Wheeler	1		
OPN	1	2	2	2	9	5				<b>TOTAL</b>	21		
<b>Division</b>	4	8	12	16	20	24	24C	14	18	<b>Judge</b>	<b>Ring</b>		
EX			1	1	5	4	1			Debby Wheeler	1		
EX P			4	3	3					Debby Wheeler	1		
MAS		9	7	6	8	4				Debby Wheeler	1		
MAS P	2	6	4	13	4					Debby Wheeler	1		
EXC	2	15	16	23	20	8	1			<b>TOTAL</b>	85		
<b>Division</b>	4	8	12	16	20	24	24C	14	18	<b>Judge</b>	<b>Ring</b>		
PRM		3	2	5	4	3	1			Debby Wheeler	1		
PRM P			2	2	1					Debby Wheeler	1		
PREM		3	4	7	5	3	1			<b>TOTAL</b>	23		
<b>Division</b>	4	8	12	16	20	24	24C	14	18	<b>Judge</b>	<b>Ring</b>		
NOV A			1		1	1				Mark Sjogren	2		
NOV B		1			9	5				Mark Sjogren	2		
NOV P				3	3					Mark Sjogren	2		
NOV		1	1	3	13	6				<b>TOTAL</b>	24		
<b>Division</b>	4	8	12	16	20	24	24C	14	18	<b>Judge</b>	<b>Ring</b>		
OPEN		2		1	6	5				Mark Sjogren	2		
OPEN P	1		2	5	2					Mark Sjogren	2		
OPN	1	2	2	6	8	5				<b>TOTAL</b>	24		
<b>Division</b>	4	8	12	16	20	24	24C	14	18	<b>Judge</b>	<b>Ring</b>		
EX			2		6	3	1			Mark Sjogren	2		
EX P			3	2	2					Mark Sjogren	2		
MAS		9	7	8	8	4				Mark Sjogren	2		
MAS P	2	6	5	13	7					Mark Sjogren	2		
EXC	2	15	17	23	23	7	1			<b>TOTAL</b>	88		
<b>Division</b>	4	8	12	16	20	24	24C	14	18	<b>Judge</b>	<b>Ring</b>		
PRM		2	2	5	4	3	1			Debby Wheeler	1		
PRM P				2	1					Debby Wheeler	1		
PREM		2	2	7	5	3	1			<b>TOTAL</b>	20		
<b>Division</b>	4	8	12	16	20	24	24C	14	18	<b>Judge</b>	<b>Ring</b>		
NOV B					2	1				Mark Sjogren	2		
NOV P				2	1					Mark Sjogren	2		
NOV				2	3	1				<b>TOTAL</b>	6		
<b>Division</b>	4	8	12	16	20	24	24C	14	18	<b>Judge</b>	<b>Ring</b>		
OPEN				1	3	2				Mark Sjogren	2		
OPEN P				5						Mark Sjogren	2		
OPN				6	3	2				<b>TOTAL</b>	11		
<b>Division</b>	4	8	12	16	20	24	24C	14	18	<b>Judge</b>	<b>Ring</b>		
EX				1	3	1				Mark Sjogren	2		
EX P			1							Mark Sjogren	2		
MAS		5	1	3	4	4				Mark Sjogren	2		
MAS P	1	1	2	1						Mark Sjogren	2		
EXC	1	6	4	5	7	5				<b>TOTAL</b>	28		
<b>Division</b>	4	8	12	16	20	24	24C	14	18	<b>Judge</b>	<b>Ring</b>		
PREF	3	4	5	7	5					Mark Sjogren	2		
REG		6	1	3	10	7				Mark Sjogren	2		
T2B	3	10	6	10	15	7				<b>TOTAL</b>	51		
<b>Judge Totals</b>										<b>Ring Totals</b>			
Mark Sjogren											232	Ring 1	174
Debby Wheeler											174	Ring 2	232



# Sunday – 323 runs

STD	NOV										
<b>Division</b>	<b>4</b>	<b>8</b>	<b>12</b>	<b>16</b>	<b>20</b>	<b>24</b>	<b>24C</b>	<b>14</b>	<b>18</b>	<b>Judge</b>	<b>Ring</b>
NOV A			2							Mark Sjogren	1
NOV B		1		1	7	1				Mark Sjogren	1
NOV P				2	5					Mark Sjogren	1
NOV		1	2	3	12	1				<b>TOTAL</b>	19
<b>Division</b>	<b>4</b>	<b>8</b>	<b>12</b>	<b>16</b>	<b>20</b>	<b>24</b>	<b>24C</b>	<b>14</b>	<b>18</b>	<b>Judge</b>	<b>Ring</b>
OPEN		2	1	1	2	3				Mark Sjogren	1
OPEN P				1						Mark Sjogren	1
OPN		2	1	2	2	3				<b>TOTAL</b>	10
<b>Division</b>	<b>4</b>	<b>8</b>	<b>12</b>	<b>16</b>	<b>20</b>	<b>24</b>	<b>24C</b>	<b>14</b>	<b>18</b>	<b>Judge</b>	<b>Ring</b>
EX		1	1		4	2	1			Mark Sjogren	1
EX P			4	3	3					Mark Sjogren	1
MAS		10	7	6	7	2				Mark Sjogren	1
MAS P	1	4	4	12	4					Mark Sjogren	1
EXC	1	15	16	21	18	4	1			<b>TOTAL</b>	76
<b>Division</b>	<b>4</b>	<b>8</b>	<b>12</b>	<b>16</b>	<b>20</b>	<b>24</b>	<b>24C</b>	<b>14</b>	<b>18</b>	<b>Judge</b>	<b>Ring</b>
PRM		3	1	6	2	2	1			Mark Sjogren	1
PRM P			3	3	1					Mark Sjogren	1
PREM		3	4	9	3	2	1			<b>TOTAL</b>	22
<b>Division</b>	<b>4</b>	<b>8</b>	<b>12</b>	<b>16</b>	<b>20</b>	<b>24</b>	<b>24C</b>	<b>14</b>	<b>18</b>	<b>Judge</b>	<b>Ring</b>
NOV A			2		1					Debby Wheeler	2
NOV B					9	3				Debby Wheeler	2
NOV P				2	4					Debby Wheeler	2
NOV			2	2	14	3				<b>TOTAL</b>	21
<b>Division</b>	<b>4</b>	<b>8</b>	<b>12</b>	<b>16</b>	<b>20</b>	<b>24</b>	<b>24C</b>	<b>14</b>	<b>18</b>	<b>Judge</b>	<b>Ring</b>
OPEN		3		1	3	3				Debby Wheeler	2
OPEN P		1	1	2	2					Debby Wheeler	2
OPN		4	1	3	5	3				<b>TOTAL</b>	16
<b>Division</b>	<b>4</b>	<b>8</b>	<b>12</b>	<b>16</b>	<b>20</b>	<b>24</b>	<b>24C</b>	<b>14</b>	<b>18</b>	<b>Judge</b>	<b>Ring</b>
EX		1	1		4	1	1			Debby Wheeler	2
EX P			2	1	1					Debby Wheeler	2
MAS		10	8	6	7	2				Debby Wheeler	2
MAS P	1	4	5	12	6					Debby Wheeler	2
EXC	1	15	16	19	18	3	1			<b>TOTAL</b>	73
<b>Division</b>	<b>4</b>	<b>8</b>	<b>12</b>	<b>16</b>	<b>20</b>	<b>24</b>	<b>24C</b>	<b>14</b>	<b>18</b>	<b>Judge</b>	<b>Ring</b>
PRM		2	1	5	2	2	1			Mark Sjogren	1
PRM P			1	3	2					Mark Sjogren	1
PREM		2	2	8	4	2	1			<b>TOTAL</b>	19
<b>Division</b>	<b>4</b>	<b>8</b>	<b>12</b>	<b>16</b>	<b>20</b>	<b>24</b>	<b>24C</b>	<b>14</b>	<b>18</b>	<b>Judge</b>	<b>Ring</b>
NOV B				1	1	2				Debby Wheeler	2
NOV P				1	3					Debby Wheeler	2
NOV			2	4	2					<b>TOTAL</b>	8
<b>Division</b>	<b>4</b>	<b>8</b>	<b>12</b>	<b>16</b>	<b>20</b>	<b>24</b>	<b>24C</b>	<b>14</b>	<b>18</b>	<b>Judge</b>	<b>Ring</b>
OPEN				1	3					Debby Wheeler	2
OPEN P				1						Debby Wheeler	2
OPN			2	3						<b>TOTAL</b>	5
<b>Division</b>	<b>4</b>	<b>8</b>	<b>12</b>	<b>16</b>	<b>20</b>	<b>24</b>	<b>24C</b>	<b>14</b>	<b>18</b>	<b>Judge</b>	<b>Ring</b>
EX				1	2	1				Debby Wheeler	2
MAS		5		2	3	3				Debby Wheeler	2
MAS P	1	1	2	1						Debby Wheeler	2
EXC	1	6	2	4	5	4				<b>TOTAL</b>	22
<b>Division</b>	<b>4</b>	<b>8</b>	<b>12</b>	<b>16</b>	<b>20</b>	<b>24</b>	<b>24C</b>	<b>14</b>	<b>18</b>	<b>Judge</b>	<b>Ring</b>
PREF	1	2	2	3	1					Debby Wheeler	2
REG		5	2	2	9	5				Debby Wheeler	2
T2B	1	7	4	5	10	5				<b>TOTAL</b>	32
<b>Judge Totals</b>										<b>Ring Totals</b>	
Mark Sjogren											146
Debby Wheeler											177
										Ring 1	146
										Ring 2	177