

THANK YOU for COMING to the SHOW!!!!!!

United States Australian Shepherd Association Trial Running Order and Class Information Sept 9-11, 2022

Fun Fur Paws – Mt. Vernon, WA

I-5 North/South: Take Exit #218 (Starbird Rd) and East (Southbound turn left, Northbound turn right). Continue East to the 4-way stop at Bulson Rd and turn left. Follow Bulson Rd. to the intersection with Tye Rd (0.7 mi). Turn left and then after a short distance, turn right onto Stargate Place (look for the sign for Fun Fur Paws). Follow the road to the arena and parking.

Judge: Jan Skurzynski & Dale Mahoney

Class Schedule: See charts below: Start 10:00 AM Friday – 9:00 AM Weekend

Opening/Closing: Opened 7/28, closed 9/2

Walkthroughs: See the charts below for details. We will split walkthrus as needed and may do a walk/walk/run for FAST and T2B if the situation warrants a split walkthru.

Veterinarian: 24 Hour Pet Emergency Center, 14434 Avon Allen Rd., Mt. Vernon, WA 360-848-5911
Chuckanut Valley Veterinarian (staffed 24/7), 896 N. Burlington Rd., Burlington, WA 360-757-3722

Moveups: The deadline for moveups is 9/5/22. Moveups must be received in writing or email by that deadline. Day-to-Day moveups are being accepted for Saturday and Sunday.

Setup and crating: There is **NO** general crating allowed in the building at this.

Popup tents and crating is available along the West fence and North grass areas. If you are crating from your car, make sure to leave windows/doors open for air flow. If using a popup or crate on the grass, please do NOT use mats or leave items overnight.

RVs: Overnight RV camping is limited and must be reserved. Email Teri Morgan at camanoaussies @ aol.com.

Food: The Club is not planning on providing any food, snacks or refreshments at the show. Please bring your own provisions 😊

Workers: If you can help out for a class – or a day – let us know. We'll have a chief worker person coordinating things and likely have the white boards setup like usual. THANKS!

Measuring: A volunteer measuring official will be on site, check with the score table for more info.

Go To
www.r2agility.net
for Check-In, Running Order, and Maps

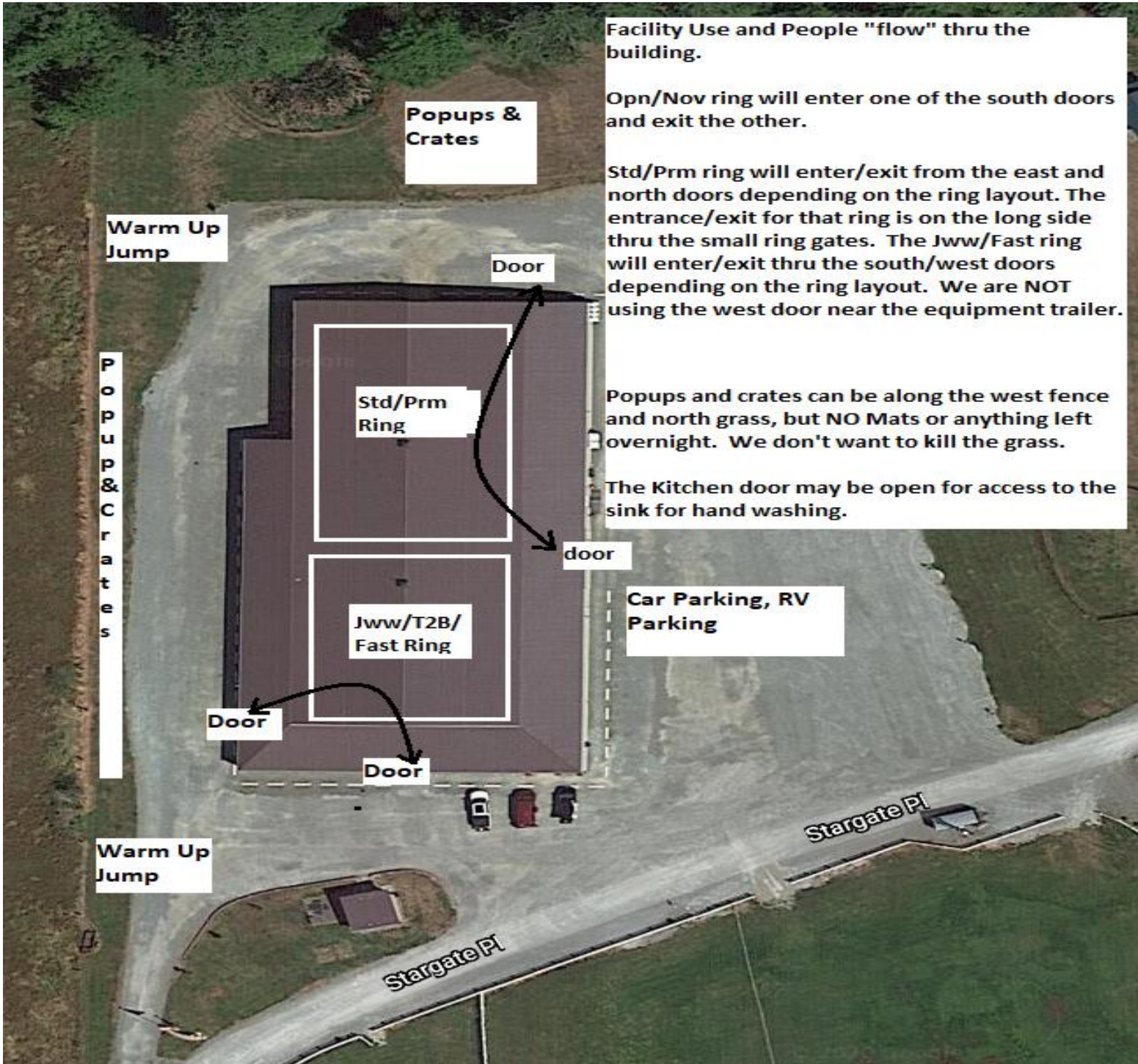
- Course Maps:** We will not be providing general paper copies of course maps. Maps will be made available on our website – www.r2agility.net sometime after **midnight**. **Judges are not allowed to send us maps until after midnight** and we will make every effort to email/post them by 7:30 AM. Maps will be posted at a couple of places around the arena.
- Gate Check-in:** We will have a normal gate steward with a paper gate sheet and may be using an electronic gate checking and monitoring system available by any internet enabled device with a web browser.
- The system allows you to check-in, mark conflict or absent, see progress, and live scores as they are entered into the computer. Please check the status to make sure your runs are correct.
- Maps will also be available on the same page sometime after 7:30 AM.
- Results:** Results will be posted in the arena and will be available on the same web page as the running order.

Important Housekeeping Info

Please use the exercise fields or the grassy areas around the parking lot to walk your dog. Please pick up after your dog. If your dog accidentally relieves itself on the building structure, please use the cleaning sprays provided by Fun Fur Paws.

Pull-in parking around the building ONLY. Do NOT back in to park around the building. If you do, you will be required to re-park.

5 MPH Speed Limit at Fun Fur Paws



Facility Use and People "flow" thru the building.

Opn/Nov ring will enter one of the south doors and exit the other.

Std/Prm ring will enter/exit from the east and north doors depending on the ring layout. The entrance/exit for that ring is on the long side thru the small ring gates. The Jww/Fast ring will enter/exit thru the south/west doors depending on the ring layout. We are NOT using the west door near the equipment trailer.

Popups and crates can be along the west fence and north grass, but NO Mats or anything left overnight. We don't want to kill the grass.

The Kitchen door may be open for access to the sink for hand washing.

Warm Up Jump

Popups & Crates

P
o
p
u
p
&
C
r
a
t
e
s

Door

Std/Prm Ring

Jww/T2B/
Fast Ring

door

Car Parking, RV Parking

Door

Door

Warm Up Jump

Stargate Pl

Stargate Pl

	Ring 1	Ring 2
Friday 10:00 AM start Tall to Small First time in each ring is accurate, all others are estimates. Plan to be at the trial site well before the listed time in case we run early.		Fast Exc/Opn/Nov Walk 10:00 Run all heights / classes
	10:30 Prm Jww Walk Run	
	11:20 Prm Std Walk Run	11:30 T2B Walk Run
	12:10 Exc Std Walk 24-16 Run 24-16	12:35 Nov Jww Walk Run
	1:00 Walk 12-4 Run 12-4	1:25 Open Jww Walk Run
	2:15 Open Std Walk Run	2:25 Exc Jww Walk 24-16 Run 24-16
	3:10 Novice Std Walk Run	3:15 Walk 12-4 Run 12-4
	3:30 Done	3:40 Done

Saturday

9:00 AM start

Small to Tall

First time in each ring is accurate, all others are estimates. Plan to be at the trial site well before the listed time in case we run early.

9:30 **Prm Jww**
Walk
Run

10:40 **Prm Std**
Walk
Run

11:55 **Exc Std**
Walk 4-12
Run 4-12

12:45 Walk 16
Run 16

1:30 Walk 20-24
Run 20-24

2:30 **Open Std**
Walk
Run

3:30 **Novice Std**
Walk
Run

3:55 Done

Fast Exc/Opn/Nov
Walk
9:00 Run all heights / classes

10:40 **T2B**
Walk
Run

11:55 **Nov Jww**
Walk
Run

12:50 **Open Jww**
Walk
Run

1:40 **Exc Jww**
Walk 4-12
Run 4-12

2:25 Walk 16
Run 16

3:00 Walk 20-24
Run 20-24

3:30 Done

Sunday

9:00 AM start

Tall to Small

First time in each ring is accurate, all others are estimates. Plan to be at the trial site well before the listed time in case we run early.

9:30 **Prm Jww**
Walk
Run

10:30 **Prm Std**
Walk
Run

11:45 **Exc Std**
Walk 24-20
Run 24-20

12:25 Walk 16
Run 16

1:15 Walk 12-4
Run 12-4

2:25 **Open Std**
Walk
Run

3:30 **Novice Std**
Walk
Run

3:50 Done

Fast Exc/Opn/Nov
Walk
9:00 Run all heights / classes

10:35 **T2B**
Walk
Run

11:40 **Nov Jww**
Walk
Run

12:30 **Open Jww**
Walk
Run

1:30 **Exc Jww**
Walk 24-20
Run 24-20

2:15 Walk 16
Run 16

2:50 Walk 12-4
Run 12-4

3:15 Done

Saturday – 385 runs

STD	NOV											
Division	4	8	12	16	20	24	24C	14	18	Judge	Ring	
NOV B		1		1	6	2				Dale Mahoney	1	
NOV P			1	3						Dale Mahoney	1	
NOV		1	1	4	6	2				TOTAL	14	
Division	4	8	12	16	20	24	24C	14	18	Judge	Ring	
OPN		1	2		4	3				Dale Mahoney	1	
OPN P			1	3	2					Dale Mahoney	1	
OPN		1	3	3	6	3				TOTAL	16	
Division	4	8	12	16	20	24	24C	14	18	Judge	Ring	
EX		1	1	5	2	3	1			Dale Mahoney	1	
EX P		1	2	3						Dale Mahoney	1	
MAS		7	9	4	9	3				Dale Mahoney	1	
MAS P	1	5	5	14	5					Dale Mahoney	1	
EXC	1	14	17	26	16	6	1			TOTAL	81	
Division	4	8	12	16	20	24	24C	14	18	Judge	Ring	
PRM		2	6	3	7	3	1			Dale Mahoney	1	
PRM P		1	3	1	2					Dale Mahoney	1	
PREM		3	9	4	9	3	1			TOTAL	29	
Division	4	8	12	16	20	24	24C	14	18	Judge	Ring	
NOV B		2	1		8	2				Jan Skurzynski	2	
NOV P			1	4						Jan Skurzynski	2	
NOV		2	2	4	8	2				TOTAL	18	
Division	4	8	12	16	20	24	24C	14	18	Judge	Ring	
OPEN		2	2	2	4	3				Jan Skurzynski	2	
OPEN P			2	2						Jan Skurzynski	2	
OPN		2	4	4	4	3				TOTAL	17	
Division	4	8	12	16	20	24	24C	14	18	Judge	Ring	
EX		1	1	2	3	4	1			Jan Skurzynski	2	
EX P				2	2					Jan Skurzynski	2	
MAS		7	8	5	12	3	1			Jan Skurzynski	2	
MAS P	1	6	6	16	6					Jan Skurzynski	2	
EXC	1	14	15	25	23	7	2			TOTAL	87	
Division	4	8	12	16	20	24	24C	14	18	Judge	Ring	
PRM		2	4	3	6	1	1			Dale Mahoney	1	
PRM P		1	2	2	1					Dale Mahoney	1	
PREM		3	6	5	7	1	1			TOTAL	23	
Division	4	8	12	16	20	24	24C	14	18	Judge	Ring	
NOV B		1			7	2				Jan Skurzynski	2	
NOV P				4						Jan Skurzynski	2	
NOV		1		4	7	2				TOTAL	14	
Division	4	8	12	16	20	24	24C	14	18	Judge	Ring	
OPEN		1	1		3	2				Jan Skurzynski	2	
OPEN P				1						Jan Skurzynski	2	
OPN		1	1	1	3	2				TOTAL	8	
Division	4	8	12	16	20	24	24C	14	18	Judge	Ring	
EX			1	1	4	1				Jan Skurzynski	2	
EX P		1	1	1						Jan Skurzynski	2	
MAS		4	1	2	3	3				Jan Skurzynski	2	
MAS P		1	3	4	1					Jan Skurzynski	2	
EXC		6	6	8	8	4				TOTAL	32	
Division	4	8	12	16	20	24	24C	14	18	Judge	Ring	
PREF	1	1	4	7						Jan Skurzynski	2	
REG		4	5	5	12	7				Jan Skurzynski	2	
T2B	1	5	9	12	12	7				TOTAL	46	
Judge Totals												
Dale Mahoney		163									Ring 1	163
Jan Skurzynski		222									Ring 2	222

Sunday – 368 runs

STD		NOV										
Division	4	8	12	16	20	24	24C	14	18	Judge	Ring	
NOV B		1		1	5	3				Jan Skurzynski	1	
NOV P				4	1					Jan Skurzynski	1	
NOV		1		5	6	3				TOTAL	15	
STD		OPN										
Division	4	8	12	16	20	24	24C	14	18	Judge	Ring	
OPEN		1	1		6	4				Jan Skurzynski	1	
OPEN P	1	1	2	1	2					Jan Skurzynski	1	
OPN	1	2	3	1	8	4				TOTAL	19	
STD		EXC										
Division	4	8	12	16	20	24	24C	14	18	Judge	Ring	
EX		2		4	3	4	1			Jan Skurzynski	1	
EX P		1	2	2						Jan Skurzynski	1	
MAS		9	8	6	7	2				Jan Skurzynski	1	
MAS P	1	6	3	15	4					Jan Skurzynski	1	
EXC	1	18	13	27	14	6	1			TOTAL	80	
STD		PREM										
Division	4	8	12	16	20	24	24C	14	18	Judge	Ring	
PRM		3	3	5	5	2	1			Jan Skurzynski	1	
PRM P		1	1	2	1					Jan Skurzynski	1	
PREM		4	4	7	6	2	1			TOTAL	24	
JWW		NOV										
Division	4	8	12	16	20	24	24C	14	18	Judge	Ring	
NOV B		1	1	1	7	3				Dale Mahoney	2	
NOV P				3						Dale Mahoney	2	
NOV		1	1	4	7	3				TOTAL	16	
JWW		OPN										
Division	4	8	12	16	20	24	24C	14	18	Judge	Ring	
OPEN		1	1	1	6	4				Dale Mahoney	2	
OPEN P	1	2	3	2						Dale Mahoney	2	
OPN	1	3	4	3	6	4				TOTAL	21	
JWW		EXC										
Division	4	8	12	16	20	24	24C	14	18	Judge	Ring	
EX		2		1	3	4	1			Dale Mahoney	2	
EX P				1	2					Dale Mahoney	2	
MAS		9	8	6	10	3	1			Dale Mahoney	2	
MAS P	1	7	3	16	6					Dale Mahoney	2	
EXC	1	18	11	24	21	7	2			TOTAL	84	
JWW		PREM										
Division	4	8	12	16	20	24	24C	14	18	Judge	Ring	
PRM		2	4	4	5	1	2			Jan Skurzynski	1	
PRM P			1	3	1					Jan Skurzynski	1	
PREM		2	5	7	6	1	2			TOTAL	23	
FAST		NOV										
Division	4	8	12	16	20	24	24C	14	18	Judge	Ring	
NOV B					5	1				Dale Mahoney	2	
NOV P				3						Dale Mahoney	2	
NOV				3	5	1				TOTAL	9	
FAST		OPN										
Division	4	8	12	16	20	24	24C	14	18	Judge	Ring	
OPEN		1	1	1	3	2				Dale Mahoney	2	
OPEN P		1		1						Dale Mahoney	2	
OPN		2	1	2	3	2				TOTAL	10	
FAST		EXC										
Division	4	8	12	16	20	24	24C	14	18	Judge	Ring	
EX				1	3	1				Dale Mahoney	2	
EX P				2						Dale Mahoney	2	
MAS		4	1	3	4	3				Dale Mahoney	2	
MAS P		1	3	2	1					Dale Mahoney	2	
EXC		5	5	8	8	4				TOTAL	30	
T2B		T2B										
Division	4	8	12	16	20	24	24C	14	18	Judge	Ring	
PREF	1		2	2	1					Dale Mahoney	2	
REG		3	4	7	8	9				Dale Mahoney	2	
T2B	1	3	6	9	9	9				TOTAL	37	
Judge Totals												
Dale Mahoney		207								Ring Totals		
Jan Skurzynski		161								Ring 1	161	
										Ring 2	207	