

Bell Vernon Kennel Association
Running Order and Class Information April 22-24, 2022
Fun Fur Paws – Mt. Vernon, WA

I-5 North/South: Take Exit #218 (Starbird Rd) and East (Southbound turn left, Northbound turn right). Continue East to the 4-way stop at Bulson Rd and turn left. Follow Bulson Rd. to the intersection with Tyee Rd (0.7 mi). Turn left and then after a short distance, turn right onto Stargate Place (look for the sign for Fun Fur Paws). Follow the road to the arena and parking.

Judge: Susan Leitner & Bill Pinder

Class Schedule: See charts below: Start 10:00 AM Friday and 9:00 AM on weekend

Opening/Closing: Opened 3/9/22, closed 4/13/22

Walkthroughs: There will be split walkthroughs for **Exc Std and Jww**. There will be plenty of walkthrough time for each class, so don't worry. ☺ If you have questions or concerns, please come to the score table for help.

Veterinarian: 24 Hour Pet Emergency Center, 14434 Avon Allen Rd., Mt. Vernon, WA 360-848-5911
Chuckanut Valley Veterinarian (staffed 24/7), 896 N. Burlington Rd., Burlington, WA 360-757-3722

Moveups: The deadline for moveups is 4/18/22 at 6PM. Moveups must be received in writing or email by that deadline. Day-to-Day moveups are being accepted for Saturday and Sunday.

Setup and crating: There is **NO general crating allowed in the building.**

Popup tents and crating is available along the West fence and North grass areas. If you are crating from your car, make sure to leave windows/doors open for air flow. If using a popup or crate on the grass, please do NOT use mats or leave items overnight.

RVs: Overnight RV camping is limited and must be reserved. Email Marie Padovan - padovandogs@comcast.net with questions.

Food: The club will **NOT** be providing any food, snacks or refreshments at the show. Please bring your own provisions ☺ **EXCEPT – we will have some coffee and tea !!!!**

Workers: We **STILL** need your help putting on the show.!!! If you can help out for a class – or a day – let us know. We'll have a chief worker person coordinating thing and likely have the white boards setup like usual. THANKS! Agility shows can't run smoothly without your help!

Measuring: A volunteer measuring official will be on site. Check with the score table for more info.

Important Housekeeping Info

Please use the exercise fields or the grassy areas around the parking lot to walk your dog. Please pick up after your dog. If your dog accidentally relieves itself on the building structure, please use the cleaning sprays provided by Fun Fur Paws.

Pull-in parking around the building ONLY. Do NOT back in to park around the building. If you do, you will be required to re-park.

5 MPH Speed Limit at Fun Fur Paws



Course Maps: We will not be providing general paper copies of course maps. Maps will be made available on our website - r2agility.net sometime after **midnight**. **Judges are not allowed to send us maps until after midnight** and we will make every effort to email/post them by 7:30 AM. Maps will be posted at a couple of places around the arena.

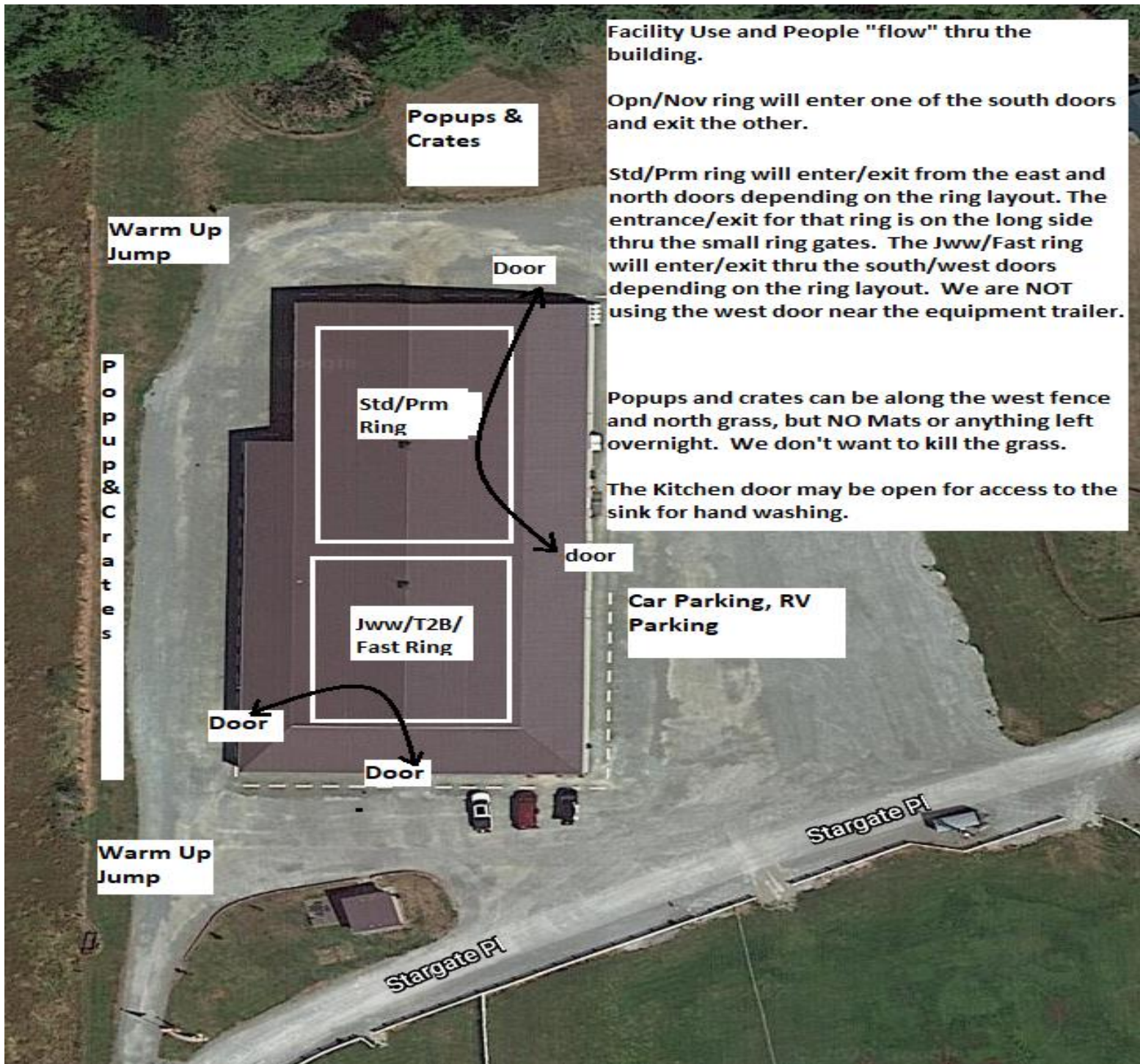
Gate Check-in: We will have a normal gate steward with a paper gate sheet but will also be using an electronic gate checking and monitoring system available by any internet or Wi-Fi enabled device with a web browser.

The new system allows you to check-in, mark conflict or absent, see progress, and live scores as they are entered into the computer. Please check the status to make sure your runs are correct.

Maps will also be available on the same page (internet or local) sometime after 7:30 AM.

Results: Results will be posted and will be available on the same web page as the running order.

Via Internet – Open a browser and go to www.r2agility.net	Via WiFi: Turn on WiFi. Select this network: R2Net (local router) – no password needed Open a browser and go to 192.168.1.7
	



Facility Use and People "flow" thru the building.

Opn/Nov ring will enter one of the south doors and exit the other.

Std/Prm ring will enter/exit from the east and north doors depending on the ring layout. The entrance/exit for that ring is on the long side thru the small ring gates. The Jww/Fast ring will enter/exit thru the south/west doors depending on the ring layout. We are NOT using the west door near the equipment trailer.

Popups and crates can be along the west fence and north grass, but NO Mats or anything left overnight. We don't want to kill the grass.

The Kitchen door may be open for access to the sink for hand washing.

Car Parking, RV Parking

Warm Up Jump

Popups & Crates

Popups & Crates

Door

Std/Prm Ring

door

Jww/T2B/Fast Ring

Door

Door

Warm Up Jump

Stargate Pl

Stargate Pl

	Ring 1	Ring 2	
<p>Friday 10:00 AM start</p> <p>Tall to Small</p> <p>First time in each ring is accurate, all others are estimates. Plan to be at the trial site well before the listed time in case we run early.</p>			
	10:30	Prm Jww Walk Run	Fast Exc/Opn/Nov Walk 10:00 Run
	11:25	Prm Std Walk Run	T2B Walk 11:20 Run
	12:25	Exc Std Walk 24-16 Run 24-16	Nov Jww Walk 12:35 Run
	1:30	Walk 12-4 Run 12-4	
	2:40	Open Std Walk Run	Open Jww Walk 1:25 Run
	3:40	Novice Std Walk Run	Exc Jww Walk 24-16 Run 24-16 2:20
	4:00	Done	Walk 12-4 Run 12-4 3:15 3:45 Done

Saturday

9:00 AM start

Small to Tall

First time in each ring is accurate, all others are estimates. Plan to be at the trial site well before the listed time in case we run early.

Prm Jww
Walk
9:30 Run

Prm Std
Walk
10:35 Run

Exc Std
Walk 4-12
11:45 Run 4-12

12:30 Walk 16-24
Run 16-24

Open Std
Walk
2:00 Run

Novice Std
Walk
3:00 Run

3:35 Done

Fast Exc/Opn/Nov
Walk
9:00 Run

T2B
Walk
10:25 Run

Nov Jww
Walk
11:30 Run

Open Jww
Walk
12:25 Run

Exc Jww
Walk 4-12
1:15 Run 4-12

2:00 Walk 16-24
Run 16-24

2:45 Done

Sunday
9:00 AM start

Tall to Small

First time in each ring is accurate, all others are estimates. Plan to be at the trial site well before the listed time in case we run early.

Prm Jww
 Walk
 9:30 Run

May hold ring slightly while T2B runs

Prm Std
 Walk
 10:30 Run

Exc Std
 Walk 24-16
 11:35 Run 24-16

12:30 Walk 12-4
 Run 12-4

Open Std
 Walk
 1:35 Run

Novice Std
 Walk
 2:30 Run

3:00 Done

Fast Exc/Opn/Nov
 9:00 Run

T2B
 Walk
 10:20 Run

Nov Jww
 Walk
 11:20 Run

Open Jww
 Walk
 12:15 Run

Exc Jww
 Walk 24-16
 1:00 Run 24-16

1:50 Walk 12-4
 Run 12-4

2:20 Done

Sunday – 298 runs

STD		NOV										
Division	4	8	12	16	20	24	24C	14	18	Judge	Ring	
NOV A				1	1	1				Bill Pinder	1	
NOV B			1		5	1				Bill Pinder	1	
NOV P	1				4					Bill Pinder	1	
NOV	1		1	1	10	2				TOTAL	15	
STD		OPN										
Division	4	8	12	16	20	24	24C	14	18	Judge	Ring	
OPEN		1	2		6	4				Bill Pinder	1	
OPEN P	1			1	1					Bill Pinder	1	
OPN	1	1	2	1	7	4				TOTAL	16	
STD		EXC										
Division	4	8	12	16	20	24	24C	14	18	Judge	Ring	
EX		1	1	4	1	1				Bill Pinder	1	
EX P				1	4					Bill Pinder	1	
MAS		8	5	3	6	3				Bill Pinder	1	
MAS P	2	6	1	8	4					Bill Pinder	1	
EXC	2	15	7	16	15	4				TOTAL	59	
STD		PREM										
Division	4	8	12	16	20	24	24C	14	18	Judge	Ring	
PRM		3	2	2	9	3				Bill Pinder	1	
PRM P		2	1	3						Bill Pinder	1	
PREM		5	3	5	9	3				TOTAL	25	
JWW		NOV										
Division	4	8	12	16	20	24	24C	14	18	Judge	Ring	
NOV A				1	1	1				Susan Leitner	2	
NOV B		1	1		4	4				Susan Leitner	2	
NOV P	2				4					Susan Leitner	2	
NOV	2	1	1	1	9	5				TOTAL	19	
JWW		OPN										
Division	4	8	12	16	20	24	24C	14	18	Judge	Ring	
OPEN		1	1	1	2	2				Susan Leitner	2	
OPEN P				2	3					Susan Leitner	2	
OPN		1	1	3	5	2				TOTAL	12	
JWW		EXC										
Division	4	8	12	16	20	24	24C	14	18	Judge	Ring	
EX		1	2	3	2	2				Susan Leitner	2	
EX P					2					Susan Leitner	2	
MAS		8	5	4	7	3				Susan Leitner	2	
MAS P	2	6	2	11	6					Susan Leitner	2	
EXC	2	15	9	18	17	5				TOTAL	66	
JWW		PREM										
Division	4	8	12	16	20	24	24C	14	18	Judge	Ring	
PRM					9	1				Bill Pinder	1	
PRM P		2	1	3						Bill Pinder	1	
PREM		2	1	3	9	1				TOTAL	16	
FAST		NOV										
Division	4	8	12	16	20	24	24C	14	18	Judge	Ring	
NOV A				1		1				Susan Leitner	2	
NOV B		1	1		1	4				Susan Leitner	2	
NOV P				1	2					Susan Leitner	2	
NOV		1	1	2	3	5				TOTAL	12	
FAST		OPN										
Division	4	8	12	16	20	24	24C	14	18	Judge	Ring	
OPEN			1	1		1				Susan Leitner	2	
OPEN P				1	2					Susan Leitner	2	
OPN			1	2	2	1				TOTAL	6	
FAST		EXC										
Division	4	8	12	16	20	24	24C	14	18	Judge	Ring	
EX				2	1	2				Susan Leitner	2	
EX P		1			1					Susan Leitner	2	
MAS		6	1	2	2					Susan Leitner	2	
MAS P		1	1	3						Susan Leitner	2	
EXC		8	2	7	4	2				TOTAL	23	
T2B		T2B										
Division	4	8	12	16	20	24	24C	14	18	Judge	Ring	
PREF	1	2	1	3	3					Susan Leitner	2	
REG		5		5	3	6				Susan Leitner	2	
T2B	1	7	1	8	6	6				TOTAL	29	
Judge Totals										Ring Totals		
Bill Pinder		131								Ring 1	131	
Susan Leitner		167								Ring 2	167	