

Evergreen Afghan Hound Club
Running Order and Class Information Oct 29-31, 2021

Fun Fur Paws – Mt. Vernon, WA

I-5 North/South: Take Exit #218 (Starbird Rd) and East (Southbound turn left, Northbound turn right). Continue East to the 4-way stop at Bulson Rd and turn left. Follow Bulson Rd. to the intersection with Tyee Rd (0.7 mi). Turn left and then after a short distance, turn right onto Stargate Place (look for the sign for Fun Fur Paws). Follow the road to the arena and parking.

Judges: Terry LeClair & ~~Pamela Nettles~~ Christian Eckhoff
NOTE: Due to a last minute issue, Pamela Nettles will not be judging and Christian will be judging her courses.

Class Schedule: See charts below: Start 10:00 AM Friday and 9:00 AM on weekend. See the charts for details.

Opening/Closing: Opened 9/15/21, closed 10/22/21

Walkthroughs: There will be split walkthroughs for **Exc Std and Jww**. All other classes will be a combined walkthrough. There will be plenty of walkthrough time for each class, so do not worry. ☺
We may need to combine or alter walkthrus slightly due to COVID (like a walk/walk-run/run).

Veterinarian: 24 Hour Pet Emergency Center, 14434 Avon Allen Rd., Mt. Vernon, WA 360-848-5911
Chuckanut Valley Veterinarian (staffed 24/7), 896 N. Burlington Rd., Burlington, WA 360-757-3722

Moveups: The deadline for moveups is Monday 10/25 at 6PM. Moveups must be received in writing or email by that deadline. Day-to-Day moveups are being accepted for Saturday and Sunday.

Setup and crating: **There is NO general crating allowed in the building. Due to the COVID limits on number of participants in the building at a time, we need the capacity to handle simultaneous walkthroughs.**

Popup tents and crating is available along the West fence and North grass areas. If you are crating from your car, make sure to leave windows/doors open for air flow. If using a popup or crate on the grass, please do NOT use mats or leave items overnight.

RVs: Overnight RV camping is limited and must be reserved. Email r2agilty@gmail.com with questions.

Food: Due to the required COVID restrictions by the state, we will NOT be providing any food, snacks or refreshments at the show. Please bring your own provisions ☺

Workers: If you can help out for a class – or a day – let us know. We'll have a chief worker person coordinating things and likely have the white boards setup like usual. THANKS!

Measuring: A volunteer measuring official will be on site, check with the score table for more info.

Important Housekeeping Info

Please use the exercise fields or the grassy areas around the parking lot to walk your dog. Please pick up after your dog. If your dog accidentally relieves itself on the building structure, please use the cleaning sprays provided by Fun Fur Paws.

Pull-in parking around the building ONLY. Do NOT back in to park around the building. If you do, you will be required to re-park.

5 MPH Speed Limit at Fun Fur Paws

COVID Specific Information

Masks:

The state of Washington is now “Open” but masks are required indoors regardless of vaccination status. Here are the listed exclusions from the state website: [WA State DOH - Mask Requirements Link](#)

- Children under five years of age. However, children age two to four years old can wear a mask under close adult supervision. Children under two years of age should not wear a mask due to the risk of suffocation.
- People with a medical or mental health condition or disability that prevents them from wearing a mask
- Fully vaccinated workers who are working alone or in an area not accessible to the public
- Athletes who play indoor sports and who are actively engaged in competition or practice (masks are still required on sidelines and in team meetings)
- Small indoor private gatherings

Access Inside:

We have full access inside the building !! Still no chairs or crates allowed indoors, but at least you can come in and watch people’s runs !

Course Maps:

We will not be providing general paper copies of course maps. Maps will be made available on our website - [r2agility.net](#) (and will be available on the local WiFi system as well) sometime after **midnight**. **Judges are not allowed to send us maps until after midnight** and we will make every effort to email/post them. Maps will be posted at a couple of places around the area.

Gate Check-in:

We will have a normal gate steward with a paper gate sheet, but will also be using an electronic gate checking and monitoring system available by any internet or wifi enabled device with a web browser.

The new system allows you to check-in, mark conflict or absent, see progress, and live scores as they are entered into the computer. Please check the status to make sure your runs are correct.

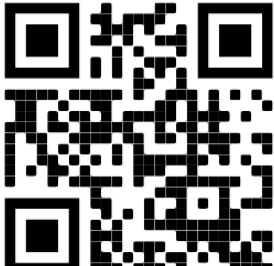

Maps will also be available on the same page (internet or local) sometime after midnight.

Results:

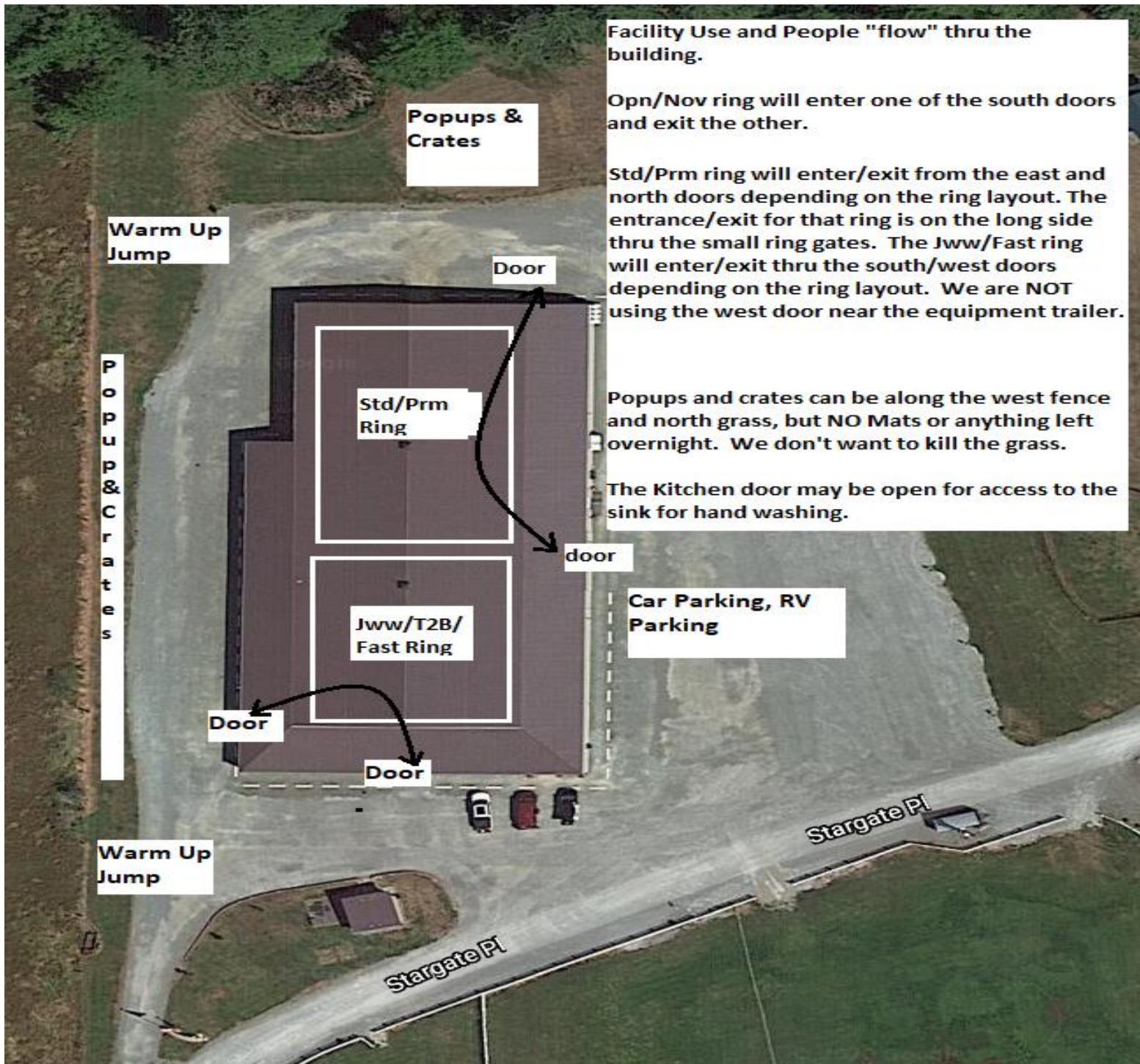
Results will be posted and will be available on the same web page as the running order.

COVID Waiver:

No required anymore!

Via Internet – Open a browser and go to www.r2agility.net	Via WiFi: Turn on WiFi. Select this network: R2Net (local router) – no password needed Open a browser and go to 192.168.1.7
	

Most devices have a QR scanner (like QR Droid for Android devices) that will automatically scan the code and open up the browser to that address. Saves typing



Facility Use and People "flow" thru the building.

Opn/Nov ring will enter one of the south doors and exit the other.

Std/Prm ring will enter/exit from the east and north doors depending on the ring layout. The entrance/exit for that ring is on the long side thru the small ring gates. The Jww/Fast ring will enter/exit thru the south/west doors depending on the ring layout. We are NOT using the west door near the equipment trailer.

Popups and crates can be along the west fence and north grass, but NO Mats or anything left overnight. We don't want to kill the grass.

The Kitchen door may be open for access to the sink for hand washing.

Car Parking, RV Parking

Warm Up Jump

Popups & Crates

Popups & Crates

Door

Std/Prm Ring

door

Jww/T2B/Fast Ring

Door

Door

Warm Up Jump

Stargate Pl

Stargate Pl

	Ring 1	Ring 2
<p>Friday 10:00 AM start</p> <p>Tall to Small</p> <p>First time in each ring is accurate, all others are estimates. Plan to be at the trial site well before the listed time in case we run early.</p>	<p>10:30 Prm Jww Walk Run</p> <p>11:30 Prm Std Walk Run</p> <p>12:25 Exc Std Walk 24-20 Run 24-20</p> <p>1:00 Walk 16-4 Run 16-4</p> <p>2:30 Open Std Walk Run</p> <p>3:30 Novice Std Walk Run</p> <p>3:50 Done</p>	<p>10:00 Fast Exc/Opn/Nov Walk Run all heights / classes</p> <p>11:25 T2B Walk Run</p> <p>12:35 Nov Jww Walk Run</p> <p>1:30 Open Jww Walk Run</p> <p>2:15 Exc Jww Walk 24-20 Run 24-20</p> <p>2:55 Walk 16-4 Run 16-4</p> <p>3:35 Done</p>

Saturday

9:00 AM start

Small to Tall

First time in each ring is accurate, all others are estimates. Plan to be at the trial site well before the listed time in case we run early.

9:30 **Prm Jww**
Walk
Run

10:35 **Prm Std**
Walk
Run

11:35 **Exc Std**
Walk 4-12
Run 4-12

12:25 Walk 16
Run 16

1:05 Walk 20-24
Run 20-24

2:15 **Open Std**
Walk
Run

3:00 **Novice Std**
Walk
Run

3:45 Done

9:00 **Fast Exc/Opn/Nov**
Walk
Run all heights / classes

10:30 **T2B**
Walk
Run

11:45 **Nov Jww**
Walk
Run

12:50 **Open Jww**
Walk
Run

1:40 **Exc Jww**
Walk 4-12
Run 4-12

2:15 Walk 16
Run 16

2:50 Walk 20-24
Run 20-24

3:15 Done

Sunday

9:00 AM start

Tall to Small

First time in each ring is accurate, all others are estimates. Plan to be at the trial site well before the listed time in case we run early.

9:30 **Prm Jww**
Walk
Run

10:40 **Prm Std**
Walk
Run

11:55 **Exc Std**
Walk 24-20
Run 24-20

12:50 Walk 16
Run 16

1:30 Walk 12-4
Run 12-4

2:30 **Open Std**
Walk
Run

3:20 **Novice Std**
Walk
Run

3:00 Done

9:00 **Fast Exc/Opn/Nov**
Walk
Run all heights / classes

10:25 **T2B**
Walk
Run

11:35 **Nov Jww**
Walk
Run

12:25 **Open Jww**
Walk
Run

1:10 **Exc Jww**
Walk 24-20
Run 24-20

2:00 Walk 16
Run 16

2:30 Walk 12-4
Run 12-4

2:55 Done

TRIAL ENTRY STATISTICS Preliminary running order contingent on move-ups not yet received.

Friday – 312 runs

STD	NOV									Judge	Ring
Division	4	8	12	16	20	24	24C	14	18		
NOV A				1	1					Terry LeClair	1
NOV B		1			4					Terry LeClair	1
NOV P	1	1		1	4					Terry LeClair	1
NOV	1	2		2	9					TOTAL	14
STD	OPN										
Division	4	8	12	16	20	24	24C	14	18	Judge	Ring
OPEN		2	1	2	3	1				Terry LeClair	1
OPEN P		1	1	4						Terry LeClair	1
OPN		3	2	6	3	1				TOTAL	15
STD	EXC										
Division	4	8	12	16	20	24	24C	14	18	Judge	Ring
EX			1	3	2	1	1			Terry LeClair	1
EX P		3	1	1	1					Terry LeClair	1
MAS		2	4	5	11	4				Terry LeClair	1
MAS P	1	6	2	10	4					Terry LeClair	1
EXC	1	11	8	19	18	5	1			TOTAL	63
STD	PREM										
Division	4	8	12	16	20	24	24C	14	18	Judge	Ring
PRM		2	1	1	6	2				Terry LeClair	1
PRM P				1	1					Terry LeClair	1
PREM		2	1	2	7	2				TOTAL	14
JWW	NOV										
Division	4	8	12	16	20	24	24C	14	18	Judge	Ring
NOV A				1	2					Pamela Nettles	2
NOV B		1			4	1				Pamela Nettles	2
NOV P	1	3		3	4					Pamela Nettles	2
NOV	1	4		4	10	1				TOTAL	20
JWW	OPN										
Division	4	8	12	16	20	24	24C	14	18	Judge	Ring
OPEN		1	1	2	5	3				Pamela Nettles	2
OPEN P			2	3	1					Pamela Nettles	2
OPN		1	3	5	6	3				TOTAL	18
JWW	EXC										
Division	4	8	12	16	20	24	24C	14	18	Judge	Ring
EX		1	1	2	3	1	1			Pamela Nettles	2
EX P		2		3						Pamela Nettles	2
MAS		2	5	6	10	4				Pamela Nettles	2
MAS P	1	6	2	9	4					Pamela Nettles	2
EXC	1	11	8	20	17	5	1			TOTAL	63
JWW	PREM										
Division	4	8	12	16	20	24	24C	14	18	Judge	Ring
PRM		1	2	1	8	3				Terry LeClair	1
PRM P				3						Terry LeClair	1
PREM		1	2	4	8	3				TOTAL	18
FAST	NOV										
Division	4	8	12	16	20	24	24C	14	18	Judge	Ring
NOV B		3	1		2	3				Pamela Nettles	2
NOV P	1	2		2						Pamela Nettles	2
NOV	1	5	1	2	2	3				TOTAL	14
FAST	OPN										
Division	4	8	12	16	20	24	24C	14	18	Judge	Ring
OPEN			1	1	2	1				Pamela Nettles	2
OPEN P		1	1	1	1					Pamela Nettles	2
OPN		1	2	2	3	1				TOTAL	9
FAST	EXC										
Division	4	8	12	16	20	24	24C	14	18	Judge	Ring
EX					1	2	1			Pamela Nettles	2
EX P			1	3	2					Pamela Nettles	2
MAS		1	2	1	2					Pamela Nettles	2
MAS P		2	1	3	1					Pamela Nettles	2
EXC		3	4	7	6	2	1			TOTAL	23
T2B	T2B										
Division	4	8	12	16	20	24	24C	14	18	Judge	Ring
PREF		6	2	8	3					Pamela Nettles	2
REG		1	4	4	8	4	1			Pamela Nettles	2
T2B		7	6	12	11	4	1			TOTAL	41
Judge Totals										Ring Totals	
Pamela Nettles		188								Ring 1	124
Terry LeClair		124								Ring 2	188

Saturday – 370 runs

STD	NOV										
Division	4	8	12	16	20	24	24C	14	18	Judge	Ring
NOV A				2	3	1				Pamela Nettles	1
NOV B		1		2	3	1				Pamela Nettles	1
NOV P	1	2	2	5	5					Pamela Nettles	1
NOV	1	3	2	9	11	2				TOTAL	28
STD	4	8	12	16	20	24	24C	14	18	Judge	Ring
OPEN		2		1		1				Pamela Nettles	1
OPEN P		1	1	2						Pamela Nettles	1
OPN		3	1	3		1				TOTAL	8
STD	4	8	12	16	20	24	24C	14	18	Judge	Ring
EX			3	5	3	2	1			Pamela Nettles	1
EX P		2		3						Pamela Nettles	1
MAS		4	6	5	12	6	1			Pamela Nettles	1
MAS P	1	9	1	10	4					Pamela Nettles	1
EXC	1	15	10	23	19	8	2			TOTAL	78
STD	4	8	12	16	20	24	24C	14	18	Judge	Ring
PRM		2	3	1	7	2	1			Pamela Nettles	1
PRM P		2		1	2					Pamela Nettles	1
PREM		4	3	2	9	2	1			TOTAL	21
STD	4	8	12	16	20	24	24C	14	18	Judge	Ring
NOV A				2	3	1				Terry LeClair	2
NOV B		2		2	2	2				Terry LeClair	2
NOV P	1	4	2	5	5					Terry LeClair	2
NOV	1	6	2	9	10	3				TOTAL	31
STD	4	8	12	16	20	24	24C	14	18	Judge	Ring
OPEN		1	1	3	2	4				Terry LeClair	2
OPEN P				1	1					Terry LeClair	2
OPN		1	1	4	3	4				TOTAL	13
STD	4	8	12	16	20	24	24C	14	18	Judge	Ring
EX		1	2	2	3	1	1			Terry LeClair	2
EX P		1		2						Terry LeClair	2
MAS		4	6	7	12	6	1			Terry LeClair	2
MAS P	1	9	1	10	3					Terry LeClair	2
EXC	1	15	9	21	18	7	2			TOTAL	73
STD	4	8	12	16	20	24	24C	14	18	Judge	Ring
PRM		2	2	1	6	3	1			Pamela Nettles	1
PRM P		2		2	1					Pamela Nettles	1
PREM		4	2	3	7	3	1			TOTAL	20
STD	4	8	12	16	20	24	24C	14	18	Judge	Ring
NOV A					1					Terry LeClair	2
NOV B		2	2	1	4	3				Terry LeClair	2
NOV P	1	1		1						Terry LeClair	2
NOV	1	3	2	2	5	3				TOTAL	16
STD	4	8	12	16	20	24	24C	14	18	Judge	Ring
OPEN		1	1	1	2	1				Terry LeClair	2
OPEN P		2		2						Terry LeClair	2
OPN		3	1	3	2	1				TOTAL	10
STD	4	8	12	16	20	24	24C	14	18	Judge	Ring
EX					1	1	1			Terry LeClair	2
EX P			1	2						Terry LeClair	2
MAS		2	1	3	1					Terry LeClair	2
MAS P		4	1	2	1					Terry LeClair	2
EXC		6	3	7	3	1	1			TOTAL	21
STD	4	8	12	16	20	24	24C	14	18	Judge	Ring
PREF		4	2	10	2					Terry LeClair	2
REG		3	3	9	11	6	1			Terry LeClair	2
T2B		7	5	19	13	6	1			TOTAL	51
Judge Totals										Ring Totals	
Pamela Nettles		155								Ring 1	155
Terry LeClair		215								Ring 2	215

Sunday – 351 runs

STD		NOV										
Division	4	8	12	16	20	24	24C	14	18	Judge	Ring	
NOV B		1		2	2	1				Terry LeClair	1	
NOV P	1			2	4					Terry LeClair	1	
NOV	1	1		4	6	1				TOTAL	13	
STD		OPN										
Division	4	8	12	16	20	24	24C	14	18	Judge	Ring	
OPEN		1		1	3	1				Terry LeClair	1	
OPEN P		1		1						Terry LeClair	1	
OPN		2		2	3	1				TOTAL	8	
STD		EXC										
Division	4	8	12	16	20	24	24C	14	18	Judge	Ring	
EX			2	4	5	1				Terry LeClair	1	
EX P		2		1	2					Terry LeClair	1	
MAS		5	4	5	14	7	1			Terry LeClair	1	
MAS P	2	6	2	13	5					Terry LeClair	1	
EXC	2	13	8	23	26	8	1			TOTAL	81	
STD		PREM										
Division	4	8	12	16	20	24	24C	14	18	Judge	Ring	
PRM		1	2	2	8	4	2			Terry LeClair	1	
PRM P		1	1	2	4					Terry LeClair	1	
PREM		2	3	4	12	4	2			TOTAL	27	
JWW		NOV										
Division	4	8	12	16	20	24	24C	14	18	Judge	Ring	
NOV A					1					Pamela Nettles	2	
NOV B		1		2	1	3				Pamela Nettles	2	
NOV P	1			1	4					Pamela Nettles	2	
NOV	1	1		3	6	3				TOTAL	14	
JWW		OPN										
Division	4	8	12	16	20	24	24C	14	18	Judge	Ring	
OPEN			1	3	3	3				Pamela Nettles	2	
OPEN P		1		1	1					Pamela Nettles	2	
OPN		1	1	4	4	3				TOTAL	13	
JWW		EXC										
Division	4	8	12	16	20	24	24C	14	18	Judge	Ring	
EX		1	1	1	6	1				Pamela Nettles	2	
EX P		2		3	2					Pamela Nettles	2	
MAS		5	5	7	14	7	1			Pamela Nettles	2	
MAS P	2	5	2	13	5					Pamela Nettles	2	
EXC	2	13	8	24	27	8	1			TOTAL	83	
JWW		PREM										
Division	4	8	12	16	20	24	24C	14	18	Judge	Ring	
PRM		1	2	1	10	4	2			Terry LeClair	1	
PRM P		1		4	1					Terry LeClair	1	
PREM		2	2	5	11	4	2			TOTAL	26	
FAST		NOV										
Division	4	8	12	16	20	24	24C	14	18	Judge	Ring	
NOV B		1	2	1	3	1				Pamela Nettles	2	
NOV P	1			1						Pamela Nettles	2	
NOV	1	1	2	2	3	1				TOTAL	10	
FAST		OPN										
Division	4	8	12	16	20	24	24C	14	18	Judge	Ring	
OPEN			1	1	4	1				Pamela Nettles	2	
OPEN P		1		1	1					Pamela Nettles	2	
OPN		1	1	2	5	1				TOTAL	10	
FAST		EXC										
Division	4	8	12	16	20	24	24C	14	18	Judge	Ring	
EX					1	2				Pamela Nettles	2	
EX P			1	2	2					Pamela Nettles	2	
MAS		3	3	1	2					Pamela Nettles	2	
MAS P		4	1	4	1					Pamela Nettles	2	
EXC		7	5	7	6	2				TOTAL	27	
T2B		T2B										
Division	4	8	12	16	20	24	24C	14	18	Judge	Ring	
PREF		3	1	5	2					Pamela Nettles	2	
REG		2	5	5	12	4				Pamela Nettles	2	
T2B		5	6	10	14	4				TOTAL	39	
Judge Totals										Ring Totals		
Pamela Nettles		196								Ring 1	155	
Terry LeClair		155								Ring 2	196	