

**THANK YOU for COMING to the SHOW!!!!!!**  
**United States Australian Shepherd Association Trial**  
**Running Order and Class Information Sept 10-12, 2021**

***Fun Fur Paws – Mt. Vernon, WA***

**I-5 North/South:** Take Exit #218 (Starbird Rd) and East (Southbound turn left, Northbound turn right). Continue East to the 4-way stop at Bulson Rd and turn left. Follow Bulson Rd. to the intersection with Tye Rd (0.7 mi). Turn left and then after a short distance, turn right onto Stargate Place (look for the sign for Fun Fur Paws). Follow the road to the arena and parking.

**Judge:** **Lori Holdren & Dave Sliger**

**Class Schedule:** See charts below: **Start 10:00 AM Friday – 9:00 AM Weekend**

**Opening/Closing:** **Opened 7/28, closed 9/3**

**Walkthroughs:** See the charts below for details. We will split walkthrus as needed and may do a walk/walk/run for FAST and T2B if the situation warrants a split walkthru.

**Veterinarian:** 24 Hour Pet Emergency Center, 14434 Avon Allen Rd., Mt. Vernon, WA 360-848-5911  
Chuckanut Valley Veterinarian (staffed 24/7), 896 N. Burlington Rd., Burlington, WA 360-757-3722

**Moveups:** The deadline for moveups is 9/6/21. Moveups must be received in writing or email by that deadline. Day-to-Day moveups are being accepted for Saturday and Sunday.

**Setup and crating:** **There is NO general crating allowed in the building at this time due to current COVID restrictions by the state.**

**Popup tents and crating is available along the West fence and North grass areas. If you are crating from your car, make sure to leave windows/doors open for air flow. If using a popup or crate on the grass, please do NOT use mats or leave items overnight.**

**RVs:** Overnight RV camping is limited and must be reserved. Email Teri Morgan at camanoaussies @ aol.com.

**Food:** Due to the required COVID restrictions by the state, we will NOT be providing any food, snacks or refreshments at the show. Please bring your own provisions ☺☺

**Workers:** If you can help out for a class – or a day – let us know. We'll have a chief worker person coordinating things and likely have the white boards setup like usual. THANKS!

**Measuring:** A volunteer measuring official will be on site, check with the score table for more info.

**Important Housekeeping Info**



Please use the exercise fields or the grassy areas around the parking lot to walk your dog. Please pick up after your dog. If your dog accidentally relieves itself on the building structure, please use the cleaning sprays provided by Fun Fur Paws.

**Pull-in parking around the building ONLY. Do NOT back in to park around the building. If you do, you will be required to re-park.**

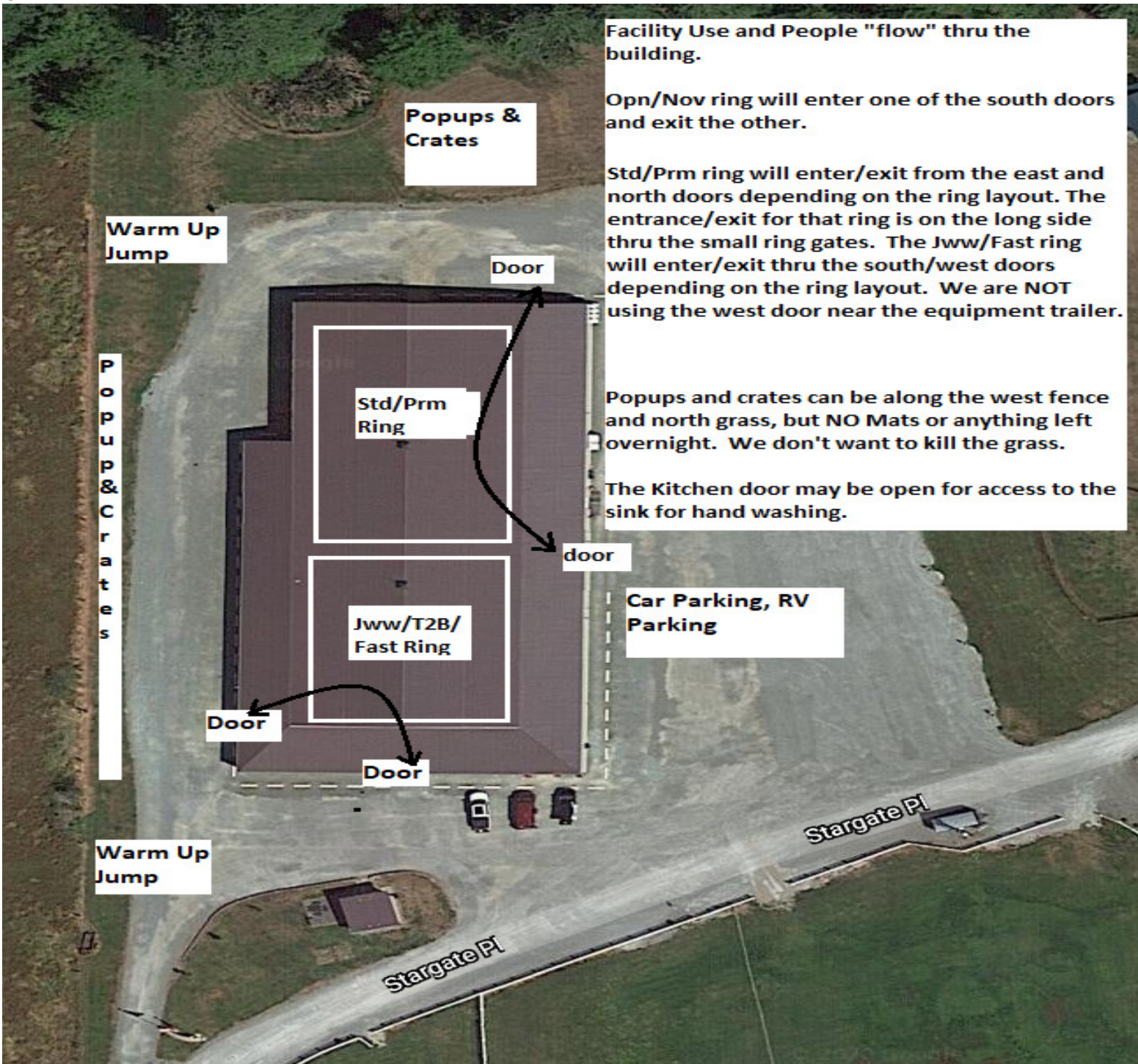
**5 MPH Speed Limit at Fun Fur Paws**

# COVID Specific Information

- Masks:** The state of Washington is now “Open” but masks are required indoors regardless of vaccination status. Here are the listed exclusions from the state website: [WA State DOH - Mask Requirements Link](#)
- Children under five years of age. However, children age two to four years old can wear a mask under close adult supervision. Children under two years of age should not wear a mask due to the risk of suffocation.
  - People with a medical or mental health condition or disability that prevents them from wearing a mask
  - Fully vaccinated workers who are working alone or in an area not accessible to the public
  - Athletes who play indoor sports and who are actively engaged in competition or practice (masks are still required on sidelines and in team meetings)
  - Small indoor private gatherings
- Access Inside:** We have full access inside the building !! Still no chairs or crates allowed indoors, but at least you can come in and watch people’s runs !
- Course Maps:** We will not be providing general paper copies of course maps. Maps will be made available on our website - [r2agility.net](#) (and will be available on the local WiFi system as well) sometime after 6PM the previous night. If you need a paper copy, please print one at home.
- Gate Check-in:** We will have a normal gate steward with a paper gate sheet, but will also be using an electronic gate checking and monitoring system available by any internet or wifi enabled device with a web browser.
- The new system allows you to check-in, mark conflict or absent, see progress, and live scores as they are entered into the computer. Please check the status to make sure your runs are correct.
- Maps will also be available on the same page (internet or local) sometime after 6PM.
- Results:** Results will be posted and will be available on the same web page as the running order.
- COVID Waiver:** No required anymore!

Via Internet – Open a browser and go to <a href="http://www.r2agility.net">www.r2agility.net</a>	Via WiFi: Turn on WiFi. Select one of the following: R2Net (local router) – no password needed R2Gate (extended WiFi mesh) – pswd: r2agility1  Open a browser and go to 192.168.1.7
	

Most devices have a QR scanner (like QR Droid for Android devices) that will automatically scan the code and open up the browser to that address. Saves typing



Facility Use and People "flow" thru the building.

Opn/Nov ring will enter one of the south doors and exit the other.

Std/Prm ring will enter/exit from the east and north doors depending on the ring layout. The entrance/exit for that ring is on the long side thru the small ring gates. The Jww/Fast ring will enter/exit thru the south/west doors depending on the ring layout. We are NOT using the west door near the equipment trailer.

Popups and crates can be along the west fence and north grass, but NO Mats or anything left overnight. We don't want to kill the grass.

The Kitchen door may be open for access to the sink for hand washing.

Car Parking, RV Parking

Warm Up Jump

Popups & Crates

Popups & Crates

Door

Std/Prm Ring

Jww/T2B/Fast Ring

Door

Door

door

Warm Up Jump

Stargate Pl

Stargate Pl

	Ring 1	Ring 2	
<p><b>Friday</b> <b>10:00 AM start</b></p> <p>Tall to Small</p> <p>First time in each ring is accurate, all others are estimates. Plan to be at the trial site well before the listed time in case we run early.</p>		<p><b>Fast Exc/Opn/Nov</b> Walk 10:00 Run all heights / classes</p>	
	<p><b>Prm Jww</b> Walk 10:30 Run</p>		
	<p><b>Prm Std</b> Walk 11:30 Run</p>	<p><b>T2B</b> Walk 11:25 Run</p>	
	<p><b>Exc Std</b> Walk 24-20 12:25 Run 24-20</p>	<p><b>Nov Jww</b> Walk 12:35 Run</p>	
	<p>Walk 16-4 1:00 Run 16-4</p>	<p><b>Open Jww</b> Walk 1:25 Run</p>	
	<p><b>Open Std</b> Walk 2:15 Run</p>	<p><b>Exc Jww</b> Walk 24-20 2:15 Run 24-20</p>	
	<p><b>Novice Std</b> Walk 3:10 Run</p>	<p>Walk 16-4 2:55 Run 16-4</p>	
	<p>3:30 Done</p>	<p>3:25 Done</p>	

# Saturday

## 9:00 AM start

Small to Tall

First time in each ring is accurate, all others are estimates. Plan to be at the trial site well before the listed time in case we run early.

9:30 **Prm Jww**  
Walk  
Run

10:40 **Prm Std**  
Walk  
Run

11:35 **Exc Std**  
Walk 4-16  
Run 4-16

12:40 Walk 20-24  
Run 20-24

1:50 **Open Std**  
Walk  
Run

2:50 **Novice Std**  
Walk  
Run

3:05 Done

**Fast Exc/Opn/Nov**  
Walk  
9:00 Run all heights / classes

10:30 **T2B**  
Walk  
Run

11:45 **Nov Jww**  
Walk  
Run

12:30 **Open Jww**  
Walk  
Run

1:30 **Exc Jww**  
Walk 4-16  
Run 4-16

2:20 Walk 20-24  
Run 20-24

2:45 Done

# Sunday

## 9:00 AM start

Tall to Small

First time in each ring is accurate, all others are estimates. Plan to be at the trial site well before the listed time in case we run early.

9:30 **Prm Jww**  
Walk  
Run

10:30 **Prm Std**  
Walk  
Run

11:35 **Exc Std**  
Walk 24-20  
Run 24-20

12:30 Walk 16-4  
Run 16-4

1:50 **Open Std**  
Walk  
Run

2:40 **Novice Std**  
Walk  
Run

3:00 Done

**Fast Exc/Opn/Nov**  
Walk  
9:00 Run all heights / classes

10:25 **T2B**  
Walk  
Run

11:35 **Nov Jww**  
Walk  
Run

12:25 **Open Jww**  
Walk  
Run

1:10 **Exc Jww**  
Walk 24-20  
Run 24-20

1:55 Walk 16-4  
Run 16-4

2:30 Done

# TRIAL ENTRY STATISTICS Preliminary running order contingent on move-ups not yet received.

## Friday – 283 runs

STD		NOV										
<b>Division</b>	<b>4</b>	<b>8</b>	<b>12</b>	<b>16</b>	<b>20</b>	<b>24</b>	<b>24C</b>	<b>14</b>	<b>18</b>	<b>Judge</b>	<b>Ring</b>	
NOV A			1							Lori Holdren	1	
NOV B		2			3					Lori Holdren	1	
NOV P		1	1	1	1					Lori Holdren	1	
NOV		3	2	1	4					<b>TOTAL</b>	<b>10</b>	
STD		OPN										
<b>Division</b>	<b>4</b>	<b>8</b>	<b>12</b>	<b>16</b>	<b>20</b>	<b>24</b>	<b>24C</b>	<b>14</b>	<b>18</b>	<b>Judge</b>	<b>Ring</b>	
OPEN				2	4	1				Lori Holdren	1	
OPEN P		2		3	1					Lori Holdren	1	
OPN		2		5	5	1				<b>TOTAL</b>	<b>13</b>	
STD		EXC										
<b>Division</b>	<b>4</b>	<b>8</b>	<b>12</b>	<b>16</b>	<b>20</b>	<b>24</b>	<b>24C</b>	<b>14</b>	<b>18</b>	<b>Judge</b>	<b>Ring</b>	
EX		1	2	2	4	1				Lori Holdren	1	
EX P				1						Lori Holdren	1	
MAS		3	4	5	9	3	1			Lori Holdren	1	
MAS P	2	3		9	3					Lori Holdren	1	
EXC	2	7	6	17	16	4	1			<b>TOTAL</b>	<b>53</b>	
STD		PREM										
<b>Division</b>	<b>4</b>	<b>8</b>	<b>12</b>	<b>16</b>	<b>20</b>	<b>24</b>	<b>24C</b>	<b>14</b>	<b>18</b>	<b>Judge</b>	<b>Ring</b>	
PRM		1	1	2	6	1	1			Lori Holdren	1	
PRM P				1	1					Lori Holdren	1	
PREM		1	1	3	7	1	1			<b>TOTAL</b>	<b>14</b>	
JWW		NOV										
<b>Division</b>	<b>4</b>	<b>8</b>	<b>12</b>	<b>16</b>	<b>20</b>	<b>24</b>	<b>24C</b>	<b>14</b>	<b>18</b>	<b>Judge</b>	<b>Ring</b>	
NOV A			1							Dave Sliger	2	
NOV B		2			5	3				Dave Sliger	2	
NOV P		2	1		1					Dave Sliger	2	
NOV		4	2		6	3				<b>TOTAL</b>	<b>15</b>	
JWW		OPN										
<b>Division</b>	<b>4</b>	<b>8</b>	<b>12</b>	<b>16</b>	<b>20</b>	<b>24</b>	<b>24C</b>	<b>14</b>	<b>18</b>	<b>Judge</b>	<b>Ring</b>	
OPEN		1		1	3	2				Dave Sliger	2	
OPEN P			1	5	2					Dave Sliger	2	
OPN		1	1	6	5	2				<b>TOTAL</b>	<b>15</b>	
JWW		EXC										
<b>Division</b>	<b>4</b>	<b>8</b>	<b>12</b>	<b>16</b>	<b>20</b>	<b>24</b>	<b>24C</b>	<b>14</b>	<b>18</b>	<b>Judge</b>	<b>Ring</b>	
EX			1	4	8	1				Dave Sliger	2	
EX P		1		1						Dave Sliger	2	
MAS		3	4	4	9	3	1			Dave Sliger	2	
MAS P	3	3		9	2					Dave Sliger	2	
EXC	3	7	5	18	19	4	1			<b>TOTAL</b>	<b>57</b>	
JWW		PREM										
<b>Division</b>	<b>4</b>	<b>8</b>	<b>12</b>	<b>16</b>	<b>20</b>	<b>24</b>	<b>24C</b>	<b>14</b>	<b>18</b>	<b>Judge</b>	<b>Ring</b>	
PRM		1	1	3	6	2	1			Lori Holdren	1	
PRM P				3						Lori Holdren	1	
PREM		1	1	6	6	2	1			<b>TOTAL</b>	<b>17</b>	
FAST		NOV										
<b>Division</b>	<b>4</b>	<b>8</b>	<b>12</b>	<b>16</b>	<b>20</b>	<b>24</b>	<b>24C</b>	<b>14</b>	<b>18</b>	<b>Judge</b>	<b>Ring</b>	
NOV A			1							Dave Sliger	2	
NOV B		2			1	3				Dave Sliger	2	
NOV P		1		1	1					Dave Sliger	2	
NOV		3	1	1	2	3				<b>TOTAL</b>	<b>10</b>	
FAST		OPN										
<b>Division</b>	<b>4</b>	<b>8</b>	<b>12</b>	<b>16</b>	<b>20</b>	<b>24</b>	<b>24C</b>	<b>14</b>	<b>18</b>	<b>Judge</b>	<b>Ring</b>	
OPEN				1	4	2				Dave Sliger	2	
OPEN P		1		2						Dave Sliger	2	
OPN		1		3	4	2				<b>TOTAL</b>	<b>10</b>	
FAST		EXC										
<b>Division</b>	<b>4</b>	<b>8</b>	<b>12</b>	<b>16</b>	<b>20</b>	<b>24</b>	<b>24C</b>	<b>14</b>	<b>18</b>	<b>Judge</b>	<b>Ring</b>	
EX				2	1	1				Dave Sliger	2	
EX P			1	1	1					Dave Sliger	2	
MAS		4	3	1	3					Dave Sliger	2	
MAS P		1		5	1					Dave Sliger	2	
EXC		5	4	9	6	1				<b>TOTAL</b>	<b>25</b>	
T2B		T2B										
<b>Division</b>	<b>4</b>	<b>8</b>	<b>12</b>	<b>16</b>	<b>20</b>	<b>24</b>	<b>24C</b>	<b>14</b>	<b>18</b>	<b>Judge</b>	<b>Ring</b>	
PREF	1	2		9	2					Dave Sliger	2	
REG		3	5	8	10	4				Dave Sliger	2	
T2B	1	5	5	17	12	4				<b>TOTAL</b>	<b>44</b>	
<b>Judge Totals</b>										<b>Ring Totals</b>		
<b>Dave Sliger</b>		176								<b>Ring 1</b>	107	
<b>Lori Holdren</b>		107								<b>Ring 2</b>	176	

# Saturday – 339 runs

STD	NOV									Judge	Ring
<b>Division</b>	<b>4</b>	<b>8</b>	<b>12</b>	<b>16</b>	<b>20</b>	<b>24</b>	<b>24C</b>	<b>14</b>	<b>18</b>	<b>Judge</b>	<b>Ring</b>
NOV A		1	1		4					Dave Sliger	1
NOV B		1	1		4					Dave Sliger	1
NOV P				2	1					Dave Sliger	1
NOV		1	2	2	5					<b>TOTAL</b>	10
STD	OPN										
<b>Division</b>	<b>4</b>	<b>8</b>	<b>12</b>	<b>16</b>	<b>20</b>	<b>24</b>	<b>24C</b>	<b>14</b>	<b>18</b>	<b>Judge</b>	<b>Ring</b>
OPEN			1	2	5	3				Dave Sliger	1
OPEN P		1		2	3					Dave Sliger	1
OPN		1	1	4	8	3				<b>TOTAL</b>	17
STD	EXC										
<b>Division</b>	<b>4</b>	<b>8</b>	<b>12</b>	<b>16</b>	<b>20</b>	<b>24</b>	<b>24C</b>	<b>14</b>	<b>18</b>	<b>Judge</b>	<b>Ring</b>
EX		1		3	3					Dave Sliger	1
EX P				1	1					Dave Sliger	1
MAS		6	5	7	13	6	1			Dave Sliger	1
MAS P	2	5		10	5					Dave Sliger	1
EXC	2	12	5	21	22	6	1			<b>TOTAL</b>	69
STD	PREM										
<b>Division</b>	<b>4</b>	<b>8</b>	<b>12</b>	<b>16</b>	<b>20</b>	<b>24</b>	<b>24C</b>	<b>14</b>	<b>18</b>	<b>Judge</b>	<b>Ring</b>
PRM		1	1	2	8	2	1			Dave Sliger	1
PRM P		1			1					Dave Sliger	1
PREM		2	1	2	9	2	1			<b>TOTAL</b>	17
JWW	NOV										
<b>Division</b>	<b>4</b>	<b>8</b>	<b>12</b>	<b>16</b>	<b>20</b>	<b>24</b>	<b>24C</b>	<b>14</b>	<b>18</b>	<b>Judge</b>	<b>Ring</b>
NOV A			1	1						Lori Holdren	2
NOV B		1		1	3	3				Lori Holdren	2
NOV P			1	1	2					Lori Holdren	2
NOV		1	2	3	5	3				<b>TOTAL</b>	14
JWW	OPN										
<b>Division</b>	<b>4</b>	<b>8</b>	<b>12</b>	<b>16</b>	<b>20</b>	<b>24</b>	<b>24C</b>	<b>14</b>	<b>18</b>	<b>Judge</b>	<b>Ring</b>
OPEN			1	1	4	3				Lori Holdren	2
OPEN P				5	4					Lori Holdren	2
OPN			1	6	8	3				<b>TOTAL</b>	18
JWW	EXC										
<b>Division</b>	<b>4</b>	<b>8</b>	<b>12</b>	<b>16</b>	<b>20</b>	<b>24</b>	<b>24C</b>	<b>14</b>	<b>18</b>	<b>Judge</b>	<b>Ring</b>
EX		1	1	4	7					Lori Holdren	2
EX P		1		1						Lori Holdren	2
MAS		6	4	7	12	6	1			Lori Holdren	2
MAS P	2	5	2	10	4					Lori Holdren	2
EXC	2	13	7	22	23	6	1			<b>TOTAL</b>	74
JWW	PREM										
<b>Division</b>	<b>4</b>	<b>8</b>	<b>12</b>	<b>16</b>	<b>20</b>	<b>24</b>	<b>24C</b>	<b>14</b>	<b>18</b>	<b>Judge</b>	<b>Ring</b>
PRM		1	1	4	11	3	1			Dave Sliger	1
PRM P		1		2						Dave Sliger	1
PREM		2	1	6	11	3	1			<b>TOTAL</b>	24
FAST	NOV										
<b>Division</b>	<b>4</b>	<b>8</b>	<b>12</b>	<b>16</b>	<b>20</b>	<b>24</b>	<b>24C</b>	<b>14</b>	<b>18</b>	<b>Judge</b>	<b>Ring</b>
NOV A			1							Lori Holdren	2
NOV B		1		1	4	2				Lori Holdren	2
NOV P		1		1	1					Lori Holdren	2
NOV		2	1	2	5	2				<b>TOTAL</b>	12
FAST	OPN										
<b>Division</b>	<b>4</b>	<b>8</b>	<b>12</b>	<b>16</b>	<b>20</b>	<b>24</b>	<b>24C</b>	<b>14</b>	<b>18</b>	<b>Judge</b>	<b>Ring</b>
OPEN			1	2	1	2				Lori Holdren	2
OPEN P		1		2						Lori Holdren	2
OPN		1	1	4	1	2				<b>TOTAL</b>	9
FAST	EXC										
<b>Division</b>	<b>4</b>	<b>8</b>	<b>12</b>	<b>16</b>	<b>20</b>	<b>24</b>	<b>24C</b>	<b>14</b>	<b>18</b>	<b>Judge</b>	<b>Ring</b>
EX		1		2	3	2				Lori Holdren	2
MAS		4	3	1	5					Lori Holdren	2
MAS P		2		5	1					Lori Holdren	2
EXC		7	3	8	9	2				<b>TOTAL</b>	29
T2B	T2B										
<b>Division</b>	<b>4</b>	<b>8</b>	<b>12</b>	<b>16</b>	<b>20</b>	<b>24</b>	<b>24C</b>	<b>14</b>	<b>18</b>	<b>Judge</b>	<b>Ring</b>
PREF		3		10	3					Lori Holdren	2
REG		4	4	7	11	4				Lori Holdren	2
T2B		7	4	17	14	4				<b>TOTAL</b>	46
<b>Judge Totals</b>										<b>Ring Totals</b>	
Dave Sliger		137								Ring 1	137
Lori Holdren		202								Ring 2	202



# Sunday – 329 runs

STD	NOV										
<b>Division</b>	<b>4</b>	<b>8</b>	<b>12</b>	<b>16</b>	<b>20</b>	<b>24</b>	<b>24C</b>	<b>14</b>	<b>18</b>	<b>Judge</b>	<b>Ring</b>
NOV A			1							Lori Holdren	1
NOV B		2		1	3	1				Lori Holdren	1
NOV P					3	2				Lori Holdren	1
NOV		2	1	4	5	1				<b>TOTAL</b>	13
<b>Division</b>	<b>4</b>	<b>8</b>	<b>12</b>	<b>16</b>	<b>20</b>	<b>24</b>	<b>24C</b>	<b>14</b>	<b>18</b>	<b>Judge</b>	<b>Ring</b>
OPEN					2	3	1			Lori Holdren	1
OPEN P		1			2	1				Lori Holdren	1
OPN		1			4	4	1			<b>TOTAL</b>	10
<b>Division</b>	<b>4</b>	<b>8</b>	<b>12</b>	<b>16</b>	<b>20</b>	<b>24</b>	<b>24C</b>	<b>14</b>	<b>18</b>	<b>Judge</b>	<b>Ring</b>
EX		1	1	3	2	1				Lori Holdren	1
EX P				1	2					Lori Holdren	1
MAS		5	4	6	14	4				Lori Holdren	1
MAS P	2	5	1	12	7					Lori Holdren	1
EXC	2	11	6	22	25	5				<b>TOTAL</b>	71
<b>Division</b>	<b>4</b>	<b>8</b>	<b>12</b>	<b>16</b>	<b>20</b>	<b>24</b>	<b>24C</b>	<b>14</b>	<b>18</b>	<b>Judge</b>	<b>Ring</b>
PRM		1	1	4	10	2				Lori Holdren	1
PRM P				2	1					Lori Holdren	1
PREM		1	1	6	11	2				<b>TOTAL</b>	21
<b>Division</b>	<b>4</b>	<b>8</b>	<b>12</b>	<b>16</b>	<b>20</b>	<b>24</b>	<b>24C</b>	<b>14</b>	<b>18</b>	<b>Judge</b>	<b>Ring</b>
NOV A			1	1						Dave Sliger	2
NOV B		1		2	3	2				Dave Sliger	2
NOV P			1	2	2					Dave Sliger	2
NOV		1	2	5	5	2				<b>TOTAL</b>	15
<b>Division</b>	<b>4</b>	<b>8</b>	<b>12</b>	<b>16</b>	<b>20</b>	<b>24</b>	<b>24C</b>	<b>14</b>	<b>18</b>	<b>Judge</b>	<b>Ring</b>
OPEN		1			1	2				Dave Sliger	2
OPEN P			1	4						Dave Sliger	2
OPN		1	1	4	1	2				<b>TOTAL</b>	9
<b>Division</b>	<b>4</b>	<b>8</b>	<b>12</b>	<b>16</b>	<b>20</b>	<b>24</b>	<b>24C</b>	<b>14</b>	<b>18</b>	<b>Judge</b>	<b>Ring</b>
EX		1	1	5	5	1				Dave Sliger	2
EX P		1			2					Dave Sliger	2
MAS		4	3	4	14	4				Dave Sliger	2
MAS P	2	5	2	12	7					Dave Sliger	2
EXC	2	11	6	21	28	5				<b>TOTAL</b>	73
<b>Division</b>	<b>4</b>	<b>8</b>	<b>12</b>	<b>16</b>	<b>20</b>	<b>24</b>	<b>24C</b>	<b>14</b>	<b>18</b>	<b>Judge</b>	<b>Ring</b>
PRM		1	1	3	9	3				Lori Holdren	1
PRM P				2						Lori Holdren	1
PREM		1	1	5	9	3				<b>TOTAL</b>	19
<b>Division</b>	<b>4</b>	<b>8</b>	<b>12</b>	<b>16</b>	<b>20</b>	<b>24</b>	<b>24C</b>	<b>14</b>	<b>18</b>	<b>Judge</b>	<b>Ring</b>
NOV A			1							Dave Sliger	2
NOV B		1			3	2				Dave Sliger	2
NOV P		1		1	2					Dave Sliger	2
NOV		2	1	1	5	2				<b>TOTAL</b>	11
<b>Division</b>	<b>4</b>	<b>8</b>	<b>12</b>	<b>16</b>	<b>20</b>	<b>24</b>	<b>24C</b>	<b>14</b>	<b>18</b>	<b>Judge</b>	<b>Ring</b>
OPEN					3	2	2			Dave Sliger	2
OPEN P		1			2					Dave Sliger	2
OPN		1			5	2	2			<b>TOTAL</b>	10
<b>Division</b>	<b>4</b>	<b>8</b>	<b>12</b>	<b>16</b>	<b>20</b>	<b>24</b>	<b>24C</b>	<b>14</b>	<b>18</b>	<b>Judge</b>	<b>Ring</b>
EX		1			1	2				Dave Sliger	2
EX P			1		1					Dave Sliger	2
MAS		4	3	2	4					Dave Sliger	2
MAS P	2	2		4	1					Dave Sliger	2
EXC	7	4	6	7	2					<b>TOTAL</b>	26
<b>Division</b>	<b>4</b>	<b>8</b>	<b>12</b>	<b>16</b>	<b>20</b>	<b>24</b>	<b>24C</b>	<b>14</b>	<b>18</b>	<b>Judge</b>	<b>Ring</b>
PREF	1	3	1	9	3					Dave Sliger	2
REG		3	3	7	10	2				Dave Sliger	2
T2B	1	6	4	16	13	2				<b>TOTAL</b>	42
<b>Judge Totals</b>										<b>Ring Totals</b>	
<b>Dave Sliger</b>		186								<b>Ring 1</b>	134
<b>Lori Holdren</b>		134								<b>Ring 2</b>	186