

THANK YOU for COMING to the SHOW!!!!!!

Washington State Obedience and Training Club Running Order and Class Information July 16-18, 2021

Fun Fur Paws – Mt. Vernon, WA

I-5 North/South: Take Exit #218 (Starbird Rd) and East (Southbound turn left, Northbound turn right). Continue East to the 4-way stop at Bulson Rd and turn left. Follow Bulson Rd. to the intersection with Tye Rd (0.7 mi). Turn left and then after a short distance, turn right onto Stargate Place (look for the sign for Fun Fur Paws). Follow the road to the arena and parking.

Judge: Dale Mahoney & Jan Skurzynski

Class Schedule: See charts below: Start 10:00 AM Friday – 9:00 AM Weekend

Opening/Closing: Opened 6/4, closed 7/9

Walkthroughs: We will split walkthrus as needed. See the charts below for details.

Veterinarian: 24 Hour Pet Emergency Center, 14434 Avon Allen Rd., Mt. Vernon, WA 360-848-5911
Chuckanut Valley Veterinarian (staffed 24/7), 896 N. Burlington Rd., Burlington, WA 360-757-3722

Moveups: The deadline for moveups is 7/12/21. Moveups must be received in writing or email by that deadline. Day-to-Day moveups are being accepted for Saturday and Sunday.

Setup and crating: There is **NO general crating allowed in the building at this time due to current COVID restrictions by the state.**

Popup tents and crating is available along the West fence and North grass areas. If you are crating from your car, make sure to leave windows/doors open for air flow. If using a popup or crate on the grass, please do NOT use mats or leave items overnight.

RVs: Overnight RV camping is limited and must be reserved. Email r2agility@gmail.com with questions.

Food: Due to the required COVID restrictions by the state, we will NOT be providing any food, snacks or refreshments at the show. Please bring your own provisions ☺

Workers: If you can help out for a class – or a day – let us know. We'll have a chief worker person coordinating thing and likely have the white boards setup like usual. THANKS!

Measuring: A volunteer measuring official will be on site, check with the score table for more info.

Important Housekeeping Info



Please use the exercise fields or the grassy areas around the parking lot to walk your dog. The fenced agility fields are off limits. Please pick up after your dog. If your dog accidentally relieves itself on the building structure, please use the cleaning sprays provided by Fun Fur Paws.

Pull-in parking around the building ONLY. Do NOT back in to park around the building. If you do, you will be required to re-park.

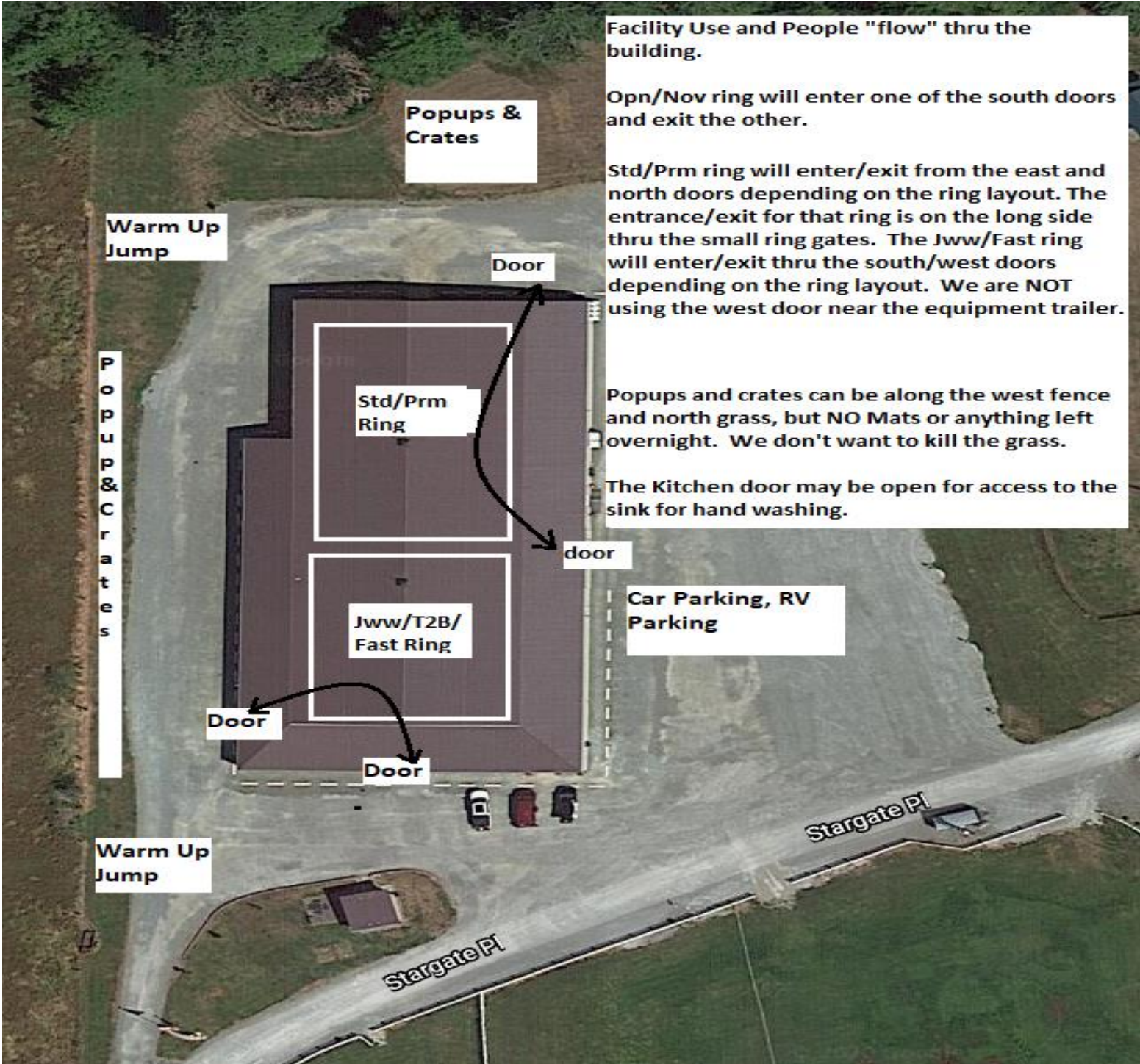
5 MPH Speed Limit at Fun Fur Paws

COVID Specific Information

- Masks:** The state of Washington is now “Open” !!!. Masks are no longer required. If you have not been vaccinated, please consider a mask when inside the building especially in the more crowded locations.
- Access Inside:** We have full access inside the building !! Still no chairs or crates allowed indoors, but at least you can come in and watch people’s runs !
- Course Maps:** We will not be providing general paper copies of course maps. Maps will be made available on our website - r2agility.net (and will be available on the local WiFi system as well) sometime after 6PM the previous night. If you need a paper copy, please print one at home.
- Gate Check-in:** We will have a normal gate steward with a paper gate sheet, but will also be using a new electronic gate checking and monitoring system available by any internet or wifi enabled device with a web browser.
- The new system allows you to check-in, mark conflict or absent, see progress, and live scores as they are entered into the computer. Please check the status to make sure your runs are correct.
- Maps will also be available on the same page (internet or local) sometime after 6PM.
- Results:** Results will be posted outside the building and will be available on the same web page as the running order. We will also post results to the website as they are generated throughout the day so you can get them remotely.
- COVID Waiver:** No required anymore!

Via Internet – Open a browser and go to www.r2agility.net	Via WiFi: Turn on WiFi. Select one of the following: R2Net (local router) – no password needed R2Gate (extended WiFi mesh) – pswd: r2agility1 Open a browser and go to 192.168.1.7
	

Most devices have a QR scanner (like QR Droid for Android devices) that will automatically scan the code and open up the browser to that address. Saves typing



Facility Use and People "flow" thru the building.

Opn/Nov ring will enter one of the south doors and exit the other.

Std/Prm ring will enter/exit from the east and north doors depending on the ring layout. The entrance/exit for that ring is on the long side thru the small ring gates. The Jww/Fast ring will enter/exit thru the south/west doors depending on the ring layout. We are NOT using the west door near the equipment trailer.

Popups and crates can be along the west fence and north grass, but NO Mats or anything left overnight. We don't want to kill the grass.

The Kitchen door may be open for access to the sink for hand washing.

Car Parking, RV Parking

Warm Up Jump

P o p u p s & C r a t e s

Popups & Crates

Door

Std/Prm Ring

Jww/T2B/Fast Ring

Door

Door

door

Warm Up Jump

Stargate Pl

Stargate Pl

	Ring 1	Ring 2
<p>Friday 10:00 AM start</p> <p>Tall to Small</p> <p>First time in each ring is accurate, all others are estimates. Plan to be at the trial site well before the listed time in case we run early.</p>	<p>Prm Jww Walk 10:30 Run</p> <p>Prm Std Walk 11:20 Run</p> <p>Exc Std Walk 24-20 12:15 Run 24-20</p> <p>Walk 16-4 12:50 Run 16-4</p> <p>Open Std Walk 2:00 Run</p> <p>Novice Std Walk 3:00 Run</p> <p>3:20 Done</p>	<p>Fast Exc/Opn/Nov Walk 10:00 Run all heights / classes</p> <p>T2B Walk 11:15 Run</p> <p>Nov Jww Walk 12:20 Run</p> <p>Open Jww Walk 1:15 Run</p> <p>Exc Jww Walk 24-20 2:00 Run 24-20</p> <p>Walk 16-4 2:30 Run 16-4</p> <p>3:00 Done</p>

Saturday

9:00 AM start

Small to Tall

First time in each ring is accurate, all others are estimates. Plan to be at the trial site well before the listed time in case we run early.

9:30 **Prm Jww**
Walk
Run

10:30 **Prm Std**
Walk
Run

11:30 **Exc Std**
Walk 4-16
Run 4-16

12:30 Walk 20-24
Run 20-24

1:30 **Open Std**
Walk
Run

2:20 **Novice Std**
Walk
Run

2:25 Done

Fast Exc/Opn/Nov
Walk
9:00 Run all heights / classes

10:25 **T2B**
Walk
Run

11:40 **Nov Jww**
Walk
Run

12:30 **Open Jww**
Walk
Run

1:20 **Exc Jww**
Walk 4-16
Run 4-16

2:05 Walk 20-24
Run 20-24

2:30 Done

Sunday

9:00 AM start

Tall to Small

First time in each ring is accurate, all others are estimates. Plan to be at the trial site well before the listed time in case we run early.

9:30 **Prm Jww**
Walk
Run

10:30 **Prm Std**
Walk
Run

11:35 **Exc Std**
Walk 24-20
Run 24-20

12:30 Walk 16-4
Run 16-4

1:50 **Open Std**
Walk
Run

2:50 **Novice Std**
Walk
Run

3:15 Done

Fast Exc/Opn/Nov
Walk
9:00 Run all heights / classes

10:20 **T2B**
Walk
Run

11:30 **Nov Jww**
Walk
Run

12:30 **Open Jww**
Walk
Run

1:15 **Exc Jww**
Walk 24-20
Run 24-20

2:00 Walk 16-4
Run 16-4

2:30 Done

TRIAL ENTRY STATISTICS Preliminary running order contingent on move-ups not yet received.

Friday – 258 runs

STD		NOV										
Division	4	8	12	16	20	24	24C	14	18	Judge	Ring	
NOV A				1	1					Jan Skurzynski	1	
NOV B		2	2	1	1					Jan Skurzynski	1	
NOV P			1	3	2					Jan Skurzynski	1	
NOV		2	3	5	4					TOTAL	14	
STD		OPN										
Division	4	8	12	16	20	24	24C	14	18	Judge	Ring	
OPEN		1			6	3				Jan Skurzynski	1	
OPEN P		2		1						Jan Skurzynski	1	
OPN		3		1	6	3				TOTAL	13	
STD		EXC										
Division	4	8	12	16	20	24	24C	14	18	Judge	Ring	
EX		1	2	3	1					Jan Skurzynski	1	
EX P			1		3					Jan Skurzynski	1	
MAS		2	4	3	8	3				Jan Skurzynski	1	
MAS P	1	6		10	2					Jan Skurzynski	1	
EXC	1	9	7	16	14	3				TOTAL	50	
STD		PREM										
Division	4	8	12	16	20	24	24C	14	18	Judge	Ring	
PRM		1	1	2	7	1				Jan Skurzynski	1	
PRM P				2						Jan Skurzynski	1	
PREM		1	1	4	7	1				TOTAL	14	
JWW		NOV										
Division	4	8	12	16	20	24	24C	14	18	Judge	Ring	
NOV A				1	1					Dale Mahoney	2	
NOV B		1	1	1	2	5				Dale Mahoney	2	
NOV P		1	1	3	2					Dale Mahoney	2	
NOV		2	2	5	5	5				TOTAL	19	
JWW		OPN										
Division	4	8	12	16	20	24	24C	14	18	Judge	Ring	
OPEN		2		2	3	3				Dale Mahoney	2	
OPEN P		1	1	2						Dale Mahoney	2	
OPN		3	1	4	3	3				TOTAL	14	
JWW		EXC										
Division	4	8	12	16	20	24	24C	14	18	Judge	Ring	
EX			1	3	5					Dale Mahoney	2	
EX P		1			1					Dale Mahoney	2	
MAS		3	4	3	8	3				Dale Mahoney	2	
MAS P	2	4		9	3					Dale Mahoney	2	
EXC	2	8	5	15	17	3				TOTAL	50	
JWW		PREM										
Division	4	8	12	16	20	24	24C	14	18	Judge	Ring	
PRM		1			7	1				Jan Skurzynski	1	
PRM P				1						Jan Skurzynski	1	
PREM		1		1	7	1				TOTAL	10	
FAST		NOV										
Division	4	8	12	16	20	24	24C	14	18	Judge	Ring	
NOV B		1		1	3	2				Dale Mahoney	2	
NOV P				3	2					Dale Mahoney	2	
NOV		1		4	5	2				TOTAL	12	
FAST		OPN										
Division	4	8	12	16	20	24	24C	14	18	Judge	Ring	
OPEN				2	1					Dale Mahoney	2	
OPEN P		1		1	1					Dale Mahoney	2	
OPN		1		1	3	1				TOTAL	6	
FAST		EXC										
Division	4	8	12	16	20	24	24C	14	18	Judge	Ring	
EX				2	2					Dale Mahoney	2	
EX P		1	1	1	1					Dale Mahoney	2	
MAS		2	3		1					Dale Mahoney	2	
MAS P		1		4	1					Dale Mahoney	2	
EXC		4	4	5	5	2				TOTAL	20	
T2B		T2B										
Division	4	8	12	16	20	24	24C	14	18	Judge	Ring	
PREF		3	1	8	3					Dale Mahoney	2	
REG		3	3	4	7	4				Dale Mahoney	2	
T2B		6	4	12	10	4				TOTAL	36	
Judge Totals										Ring Totals		
Jan Skurzynski		101								Ring 1	101	
Dale Mahoney		157								Ring 2	157	

Saturday – 299 runs

STD	NOV										
Division	4	8	12	16	20	24	24C	14	18	Judge	Ring
NOV A				1		1				Dale Mahoney	1
NOV B		1								Dale Mahoney	1
NOV P				2	2					Dale Mahoney	1
NOV		1		3	2	1				TOTAL	7
Division	4	8	12	16	20	24	24C	14	18	Judge	Ring
OPEN		1	2	1	2	3				Dale Mahoney	1
OPEN P		1		1						Dale Mahoney	1
OPN		2	2	2	2	3				TOTAL	11
Division	4	8	12	16	20	24	24C	14	18	Judge	Ring
EX		1		3	4					Dale Mahoney	1
EX P				2	2					Dale Mahoney	1
MAS		2	6	7	12	4				Dale Mahoney	1
MAS P	1	5	1	9	3					Dale Mahoney	1
EXC	1	8	7	21	21	4				TOTAL	62
Division	4	8	12	16	20	24	24C	14	18	Judge	Ring
PRM		1	2	3	7	2				Dale Mahoney	1
PRM P		1	1	2						Dale Mahoney	1
PREM		2	3	5	7	2				TOTAL	19
Division	4	8	12	16	20	24	24C	14	18	Judge	Ring
NOV A				1		1				Jan Skurzynski	2
NOV B		1	2	2	1	4				Jan Skurzynski	2
NOV P				1	2					Jan Skurzynski	2
NOV		1	2	4	3	5				TOTAL	15
Division	4	8	12	16	20	24	24C	14	18	Judge	Ring
OPEN		1		2	1	3				Jan Skurzynski	2
OPEN P		1		3						Jan Skurzynski	2
OPN		2		5	1	3				TOTAL	11
Division	4	8	12	16	20	24	24C	14	18	Judge	Ring
EX				5	3					Jan Skurzynski	2
EX P		1		2	1					Jan Skurzynski	2
MAS		3	5	6	16	4				Jan Skurzynski	2
MAS P	1	4	3	9	3					Jan Skurzynski	2
EXC	1	8	8	22	23	4				TOTAL	66
Division	4	8	12	16	20	24	24C	14	18	Judge	Ring
PRM		1	2	2	4	2				Dale Mahoney	1
PRM P		1	1	1	1					Dale Mahoney	1
PREM		2	3	3	5	2				TOTAL	15
Division	4	8	12	16	20	24	24C	14	18	Judge	Ring
NOV A						1				Jan Skurzynski	2
NOV B		1	1	1	5	1				Jan Skurzynski	2
NOV P				1	2					Jan Skurzynski	2
NOV		1	1	2	7	2				TOTAL	13
Division	4	8	12	16	20	24	24C	14	18	Judge	Ring
OPEN			1	1		2				Jan Skurzynski	2
OPEN P		1		3						Jan Skurzynski	2
OPN		1	1	4		2				TOTAL	8
Division	4	8	12	16	20	24	24C	14	18	Judge	Ring
EX		1		1	2	2				Jan Skurzynski	2
EX P		2			1					Jan Skurzynski	2
MAS		2	3	1	6					Jan Skurzynski	2
MAS P		1		3	1					Jan Skurzynski	2
EXC		6	3	5	10	2				TOTAL	26
Division	4	8	12	16	20	24	24C	14	18	Judge	Ring
PREF		3	1	10	3					Jan Skurzynski	2
REG		3	4	9	11	2				Jan Skurzynski	2
T2B		6	5	19	14	2				TOTAL	46
Judge Totals										Ring Totals	
Jan Skurzynski		185								Ring 1	114
Dale Mahoney		114								Ring 2	185

Sunday – 335 runs

STD	NOV											
Division	4	8	12	16	20	24	24C	14	18	Judge	Ring	
NOV A				1						Jan Skurzynski	1	
NOV B		2	1		3	1				Jan Skurzynski	1	
NOV P				2	3					Jan Skurzynski	1	
NOV		2	1	3	6	1				TOTAL	13	
Division	4	8	12	16	20	24	24C	14	18	Judge	Ring	
OPEN			2	1	1	6	3			Jan Skurzynski	1	
OPEN P				1	2					Jan Skurzynski	1	
OPN		3	1	3	6	3				TOTAL	16	
Division	4	8	12	16	20	24	24C	14	18	Judge	Ring	
EX		1	1	5	4					Jan Skurzynski	1	
EX P				2	4					Jan Skurzynski	1	
MAS		3	7	4	14	4	2			Jan Skurzynski	1	
MAS P	2	7	1	11	1					Jan Skurzynski	1	
EXC	2	11	9	22	23	4	2			TOTAL	73	
Division	4	8	12	16	20	24	24C	14	18	Judge	Ring	
PRM			1	2	2	10	1	2		Jan Skurzynski	1	
PRM P			1	3						Jan Skurzynski	1	
PREM		1	3	5	10	1	2			TOTAL	22	
Division	4	8	12	16	20	24	24C	14	18	Judge	Ring	
NOV A				1						Dale Mahoney	2	
NOV B		1		2	5	5				Dale Mahoney	2	
NOV P			1	1	2					Dale Mahoney	2	
NOV		1	1	4	7	5				TOTAL	18	
Division	4	8	12	16	20	24	24C	14	18	Judge	Ring	
OPEN		3	1	1	2	2				Dale Mahoney	2	
OPEN P		1		4						Dale Mahoney	2	
OPN		4	1	5	2	2				TOTAL	14	
Division	4	8	12	16	20	24	24C	14	18	Judge	Ring	
EX			1	4	5					Dale Mahoney	2	
EX P		1		1	3					Dale Mahoney	2	
MAS		4	6	4	16	4	2			Dale Mahoney	2	
MAS P	2	6	1	13	3					Dale Mahoney	2	
EXC	2	11	8	22	27	4	2			TOTAL	76	
Division	4	8	12	16	20	24	24C	14	18	Judge	Ring	
PRM			2	1	8	1	2			Jan Skurzynski	1	
PRM P			1	2						Jan Skurzynski	1	
PREM		1	3	3	8	1	2			TOTAL	18	
Division	4	8	12	16	20	24	24C	14	18	Judge	Ring	
NOV B		1		1	6	2				Dale Mahoney	2	
NOV P			1	1						Dale Mahoney	2	
NOV		1	1	2	6	2				TOTAL	12	
Division	4	8	12	16	20	24	24C	14	18	Judge	Ring	
OPEN			1							Dale Mahoney	2	
OPEN P				2	1					Dale Mahoney	2	
OPN			1	2	1					TOTAL	4	
Division	4	8	12	16	20	24	24C	14	18	Judge	Ring	
EX		1		2	4	2				Dale Mahoney	2	
EX P		2			1					Dale Mahoney	2	
MAS		1	3	1	3					Dale Mahoney	2	
MAS P		2		2	1					Dale Mahoney	2	
EXC		6	3	5	9	2				TOTAL	25	
Division	4	8	12	16	20	24	24C	14	18	Judge	Ring	
PREF		4	2	8	2					Dale Mahoney	2	
REG		4	5	6	12	1				Dale Mahoney	2	
T2B		8	7	14	14	1				TOTAL	44	
Judge Totals										Ring Totals		
Jan Skurzynski	142										Ring 1	142
Dale Mahoney	193										Ring 2	193