

Updated 6/22 – Weekend Start time 8:00 AM

**THANK YOU for COMING to the SHOW!!!!!!
Puget Sound Labrador Retriever Association
Running Order and Class Information June 25-27, 2021**

Fun Fur Paws – Mt. Vernon, WA

I-5 North/South: Take Exit #218 (Starbird Rd) and East (Southbound turn left, Northbound turn right). Continue East to the 4-way stop at Bulson Rd and turn left. Follow Bulson Rd. to the intersection with Tyee Rd (0.7 mi). Turn left and then after a short distance, turn right onto Stargate Place (look for the sign for Fun Fur Paws). Follow the road to the arena and parking.

Judge: Danielle LaGrave & Candy Nettles

Class Schedule: See charts below: **Start 9:00 AM Friday – 8:00 AM Weekend due to the high heat forecast**

Opening/Closing: Opened 5/12, closed 6/18

Walkthroughs: We will split walkthrus as needed. See the charts below for details.

Veterinarian: 24 Hour Pet Emergency Center, 14434 Avon Allen Rd., Mt. Vernon, WA 360-848-5911
Chuckanut Valley Veterinarian (staffed 24/7), 896 N. Burlington Rd., Burlington, WA 360-757-3722

Moveups: The deadline for moveups is 6/21/21. Moveups must be received in writing or email by that deadline. Day-to-Day moveups are being accepted for Saturday and Sunday.

Setup and crating: **There is NO general crating allowed in the building at this time due to current COVID restrictions by the state.**

Popup tents and crating is available along the West fence and North grass areas. If you are crating from your car, make sure to leave windows/doors open for air flow. If using a popup or crate on the grass, please do NOT use mats or leave items overnight.

RVs: Overnight RV camping is limited and must be reserved. Email cherimlevine@hotmail.com with questions.

Food: Due to the required COVID restrictions by the state, we will NOT be providing any food, snacks or refreshments at the show. Please bring your own provisions 🍷🍷

Workers: Even given all the new “rules”, we STILL need your help putting on the show. If you can help out for a class – or a day – let us know. We’ll have a chief worker person coordinating thing and likely have the white boards setup like usual. THANKS!

Measuring: A volunteer measuring official will be on site but measuring during these COVID times is different. If your dog can be left at the table with you at least 6’ away (safely!) and measured by a man in a mask, then we can potentially do the measure. Check with the score table for more info.

Important Housekeeping Info



Please use the exercise fields or the grassy areas around the parking lot to walk your dog. The fenced agility fields are off limits. Please pick up after your dog. If your dog accidentally relieves itself on the building structure, please use the cleaning sprays provided by Fun Fur Paws.

Pull-in parking around the building ONLY. Do NOT back in to park around the building. If you do, you will be required to re-park.

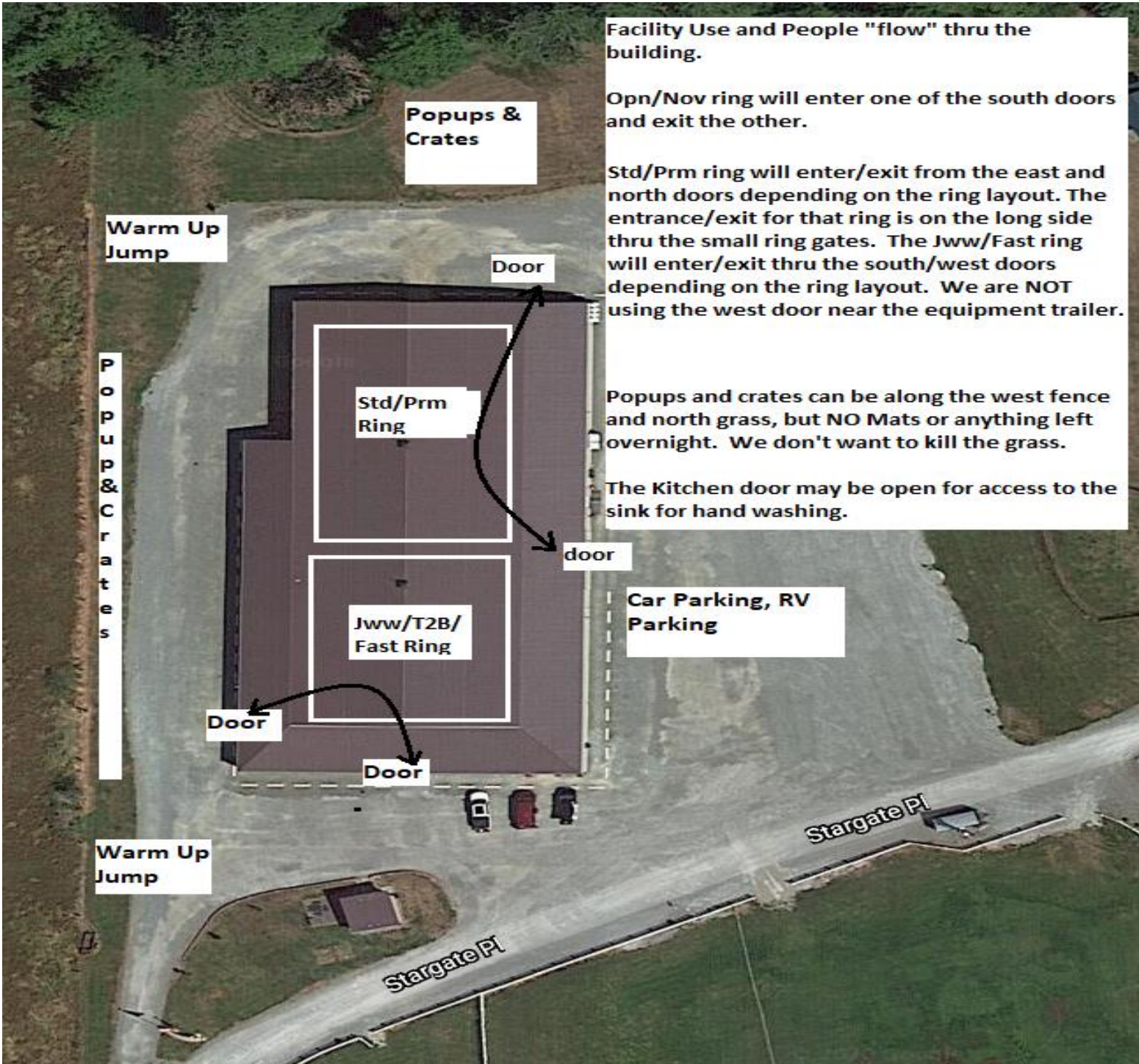
5 MPH Speed Limit at Fun Fur Paws

COVID Specific Information

- Masks:** **Indoors:** The facility rules are to wear a face mask while indoors – regardless of vaccination status. You can remove your mask while running your dog but must wear a mask while in walk throughs.
- Outdoors:** Please follow the recent CDC guidance and wear a mask if non-vaccinated and not-socially distant.
- Access Inside:** To comply with the State’s COVID rules, we are restricting access inside the building to exhibitors and staff only. We’re still under the Agricultural Event rules which prohibit spectators, guests and vendors.
- Still no chairs or crates allowed indoors, but at least you can come in and watch people’s runs !
- Course Maps:** We will not be providing general paper copies of course maps. Maps will be made available on our website - r2agility.net (and will be available on the local WiFi system as well) sometime after 6PM the previous night. If you need a paper copy, please print one at home.
- Gate Check-in:** We will have a normal gate steward with a paper gate sheet, but will also be using a new electronic gate checking and monitoring system available by any internet or wifi enabled device with a web browser.
- The new system allows you to check-in, mark conflict or absent, see progress, and live scores as they are entered into the computer. Please check the status to make sure your runs are correct.
- Maps will also be available on the same page (internet or local) sometime after 6PM.
- Results:** Results will be posted outside the building and will be available on the same web page as the running order. We will also post results to the website as they are generated throughout the day so you can get them remotely.
- COVID Waiver:** **Due to the nature of our current COVID environment, a waiver will be required to be signed by all persons at the facility. Those with minors, please sign a waiver for your child.**
- All persons must present a signed COVID waiver the first day they are at the show. You will then be given a wristband that is good for the entire trial. An email will be sent on Wednesday with more information on how to access the online waiver. If you do not have online access or are not on the online list, a paper copy can be turned in to get a wristband.

<p>Via Internet – Open a browser and go to</p> <p>www.r2agility.net</p>	<p>Via WiFi: Turn on WiFi. Select one of the following:</p> <p>R2Net (local router) – no password needed</p> <p>R2Gate (extended WiFi mesh) – pswd: r2agility1</p> <p>Open a browser and go to 192.168.1.7</p>
	

Most devices have a QR scanner (like QR Droid for Android devices) that will automatically scan the code and open up the browser to that address. Saves typing



Facility Use and People "flow" thru the building.

Opn/Nov ring will enter one of the south doors and exit the other.

Std/Prm ring will enter/exit from the east and north doors depending on the ring layout. The entrance/exit for that ring is on the long side thru the small ring gates. The Jww/Fast ring will enter/exit thru the south/west doors depending on the ring layout. We are NOT using the west door near the equipment trailer.

Popups and crates can be along the west fence and north grass, but NO Mats or anything left overnight. We don't want to kill the grass.

The Kitchen door may be open for access to the sink for hand washing.

Car Parking, RV Parking

It is forecast to be HOT next weekend, so be sure to bring shade for your car or a pop-up to make shade. The picture above has the places for pop-ups.

**Assumption of the Risk and Waiver of Liability Relating to
Coronavirus/COVID-19**

The novel coronavirus, COVID -19, has been declared a worldwide pandemic by the World Health Organization (WHO). COVID-19 is EXTREMELY contagious and is believed to spread mainly from person to person contact. *As a result, federal, state & local governments and federal and state health agencies recommend social distancing and in many locations, have prohibited the congregation of large groups of people. ~ May 2020*

Fun Fur Paws LLC (FFP) & Catch the Wave Dog Training (Marie P) & Susan Shearer (SS) have put in place some new protocols & guidelines/preventative measures to help reduce the spread of COVID-19 at the FFP facility ; however , FFP CANNOT guarantee that you will not become exposed to, or infected with COVID-19. Further, attending classes/lessons, open practices, play days, any events, dog-related activities or exercising your dog on & in FFP property could increase your risk of contracting COVID-19.

By signing this agreement, I acknowledge the contagious nature of COVID-19 and voluntarily assume the risk that I may be exposed to, or infected by COVID-19 by attending dog related, or any activities at FFP and that such exposure or infection may result in personal injury, illness, permanent disability, or death. I understand that the risk of becoming exposed to, or infected by COVID-19 at FFP may result from the actions, omissions, or negligence of myself and others, including but not limited to FFP, trainers, instructors, assistant instructors, members, directors, governors, agents, event secretary, event-giving club, AKC, NADAC, CPE and the facility owner and any employees or volunteers of the aforementioned parties, and any "organizations approved judge", judging at events held at FFP.

I voluntary agree to assume all of the foregoing risks and accept sole responsibility for any injury to myself (including but not limited to; personal injury, illness, permanent disability, or death), illness, damage, loss, claim, liability, ore expense, of any kind, that I may experience or incur in connection with my attendance or participation in dog related activities held at FFP. On my behalf, I hereby release, covenant not to sue, discharge, and hold harmless the facility, FFP, its owners, Dave and Melissa Burton, instructors/ teachers, or instructors/teachers assistants, an event giving club, their members, directors, governors, agents, event secretary, any employees or volunteers of the aforementioned parties., and any AKC(American Kennel Club), NADAC(North American Dog Agility Council), CPE (Canine Performance Events)approved judge, judging @ events, of and from the claims, including all liabilities, claims actions, damages, costs or expenses of any kind arising out of or relating thereto. I understand and agree that this release includes any claims based on the actions, omissions, or negligence of the aforementioned parties, whether a COVID-19 infection occurs before, during, or after participation in any dog related activities at FFP.

By signing this waiver, I agree to the following:

I attest to the best of my knowledge that I DO NOT have COVID-19 at the time of attending dog related activities at FFP. I also attest that I have not knowingly been in contact with or exposed to any known carrier of COVID-19 within the past 21 days. I agree that I will follow all FFP protocols, city, county, and state rules and requirements to reduce any exposure and possibility of contracting or spreading the virus during my attendance at FFP.

I fully submit that FFP, and any other person(s) affiliated with dog related activities taking place on ,or at ,FFP facility are in no way liable for any present or future COVID-19 exposure incurred at any time by any person, whether in attendance or not, during our after my dog related activities at FFP.

Signature of student/exhibitor/participant or parent (if handler or participant is under 18 yrs old)

Date

Printed name of student/exhibitor/participant or parent (if handler or participant is under 18 yrs old)

	Ring 1	Ring 2
Friday 9:00 AM start Tall to Small First time in each ring is accurate, all others are estimates. Plan to be at the trial site well before the listed time in case we run early.		Fast Exc/Opn/Nov Walk 9:00 Run all heights / classes
	9:30 Prm Jww Walk Run	
	10:20 Prm Std Walk Run	10:40 T2B Walk Run
	11:15 Exc Std Walk 24-20 Run 24-20	
	12:00 Walk 16 Run 16	12:00 Nov Jww Walk Run
	12:45 Walk 12-4 Run 12-4	
	1:50 Open Std Walk Run	1:00 Open Jww Walk Run
	2:45 Novice Std Walk Run	2:00 Exc Jww Walk 24-20 Run 24-20
	3:05 Done	2:30 Walk 16 Run 16
		3:00 Walk 12-4 Run 12-4
	3:30 Done	

Saturday

8:00 AM start

Small to Tall

First time in each ring is accurate, all others are estimates. Plan to be at the trial site well before the listed time in case we run early.

Prm Jww
Walk
8:30 Run

Prm Std
Walk
9:35 Run

Parade of Dogs in Nov Jww Ring

Exc Std
Walk 4-12
11:30 Run 4-12

12:20 Walk 16
Run 16

1:00 Walk 20-24
Run 20-24

Open Std
Walk
2:10 Run

Novice Std
Walk
3:05 Run

3:25 Done

Fast Exc/Opn/Nov
Walk (4-16)
Walk (20-24)
8:00 Run all heights / classes

T2B
Walk (4-16)
Walk (20-24)
9:35 Run

Parade of Dogs in Nov Jww Ring

Nov Jww
Walk
11:30 Run

Open Jww
Walk
12:20 Run

Exc Jww
Walk 4-12
1:20 Run 4-12

1:50 Walk 16
Run 16

2:25 Walk 20-24
Run 20-24

3:00 Done

Sunday

8:00 AM start

Tall to Small

First time in each ring is accurate, all others are estimates. Plan to be at the trial site well before the listed time in case we run early.

8:30 **Prm Jww**
Walk
Run

9:25 **Prm Std**
Walk
Run

10:20 **Exc Std**
Walk 24-20
Run 24-20

11:10 Walk 16
Run 16

11:50 Walk 12-4
Run 12-4

1:00 **Open Std**
Walk
Run

2:00 **Novice Std**
Walk
Run

2:10 Done

Fast Exc/Opn/Nov
Walk
8:00 Run all heights / classes

9:35 **T2B**
Walk
Run

10:50 **Nov Jww**
Walk
Run

11:40 **Open Jww**
Walk
Run

12:30 **Exc Jww**
Walk 24-20
Run 24-20

1:15 Walk 16
Run 16

1:45 Walk 12-4
Run 12-4

2:10 Done

TRIAL ENTRY STATISTICS Preliminary running order contingent on move-ups not yet received.

Friday – 351 runs

STD		NOV										
Division	4	8	12	16	20	24	24C	14	18	Judge	Ring	
NOV A			1		2					Pamela Nettles	1	
NOV B			2		1	1				Pamela Nettles	1	
NOV P				1	2					Pamela Nettles	1	
NOV			3	1	5	1				TOTAL RUNS	10	
STD		OPN										
Division	4	8	12	16	20	24	24C	14	18	Judge	Ring	
OPEN		1	1		3	1				Pamela Nettles	1	
OPEN P		2		3	1					Pamela Nettles	1	
OPN		3	1	3	4	1				TOTAL RUNS	12	
STD		EXC										
Division	4	8	12	16	20	24	24C	14	18	Judge	Ring	
EX		4	1	4	2	1				Pamela Nettles	1	
EX P		2		2	3					Pamela Nettles	1	
MAS		7	3	7	12	4	1			Pamela Nettles	1	
MAS P	1	10		9	4					Pamela Nettles	1	
EXC	1	23	4	22	21	5	1			TOTAL RUNS	77	
STD		PREM										
Division	4	8	12	16	20	24	24C	14	18	Judge	Ring	
PRM		1	3	2	4	1	1			Pamela Nettles	1	
PRM P		1		2						Pamela Nettles	1	
PREM		2	3	4	4	1	1			TOTAL RUNS	15	
JWW		NOV										
Division	4	8	12	16	20	24	24C	14	18	Judge	Ring	
NOV A			1		2					Danielle LaGrave	2	
NOV B			1	2	4	5				Danielle LaGrave	2	
NOV P		1		1	1					Danielle LaGrave	2	
NOV		1	2	3	7	5				TOTAL RUNS	18	
JWW		OPN										
Division	4	8	12	16	20	24	24C	14	18	Judge	Ring	
OPEN		1	1	2	3	3				Danielle LaGrave	2	
OPEN P		1		5	1					Danielle LaGrave	2	
OPN		2	1	7	4	3				TOTAL RUNS	17	
JWW		EXC										
Division	4	8	12	16	20	24	24C	14	18	Judge	Ring	
EX		2		4	4					Danielle LaGrave	2	
EX P		2		3	2					Danielle LaGrave	2	
MAS		8	3	7	13	4	1			Danielle LaGrave	2	
MAS P	2	9		9	4					Danielle LaGrave	2	
EXC	2	21	3	23	23	4	1			TOTAL RUNS	77	
JWW		PREM										
Division	4	8	12	16	20	24	24C	14	18	Judge	Ring	
PRM		1	1	1	3	1	1			Pamela Nettles	1	
PRM P		1		2						Pamela Nettles	1	
PREM		2	1	3	3	1	1			TOTAL RUNS	11	
FAST		NOV										
Division	4	8	12	16	20	24	24C	14	18	Judge	Ring	
NOV A			1							Danielle LaGrave	2	
NOV B		2		1	4	4				Danielle LaGrave	2	
NOV P				1	2					Danielle LaGrave	2	
NOV		2	1	2	6	4				TOTAL RUNS	15	
FAST		OPN										
Division	4	8	12	16	20	24	24C	14	18	Judge	Ring	
OPEN		2	1	1	1					Danielle LaGrave	2	
OPEN P			1	2						Danielle LaGrave	2	
OPN			3	3	1					TOTAL RUNS	7	
FAST		EXC										
Division	4	8	12	16	20	24	24C	14	18	Judge	Ring	
EX		1			2	1				Danielle LaGrave	2	
EX P		1	1	1	1					Danielle LaGrave	2	
MAS		4	3	1	5	1				Danielle LaGrave	2	
MAS P		2		5	1					Danielle LaGrave	2	
EXC		8	4	7	9	2				TOTAL RUNS	30	
T2B		T2B										
Division	4	8	12	16	20	24	24C	14	18	Judge	Ring	
PREF	1	5		11	3					Danielle LaGrave	2	
REG		5	3	10	15	9				Danielle LaGrave	2	
T2B	1	10	3	21	18	9				TOTAL RUNS	62	
Judge Totals										Ring Totals		
Danielle LaGrave		226								Ring 1	125	
Pamela Nettles		125								Ring 2	226	

Saturday – 370 runs

STD	NOV										
Division	4	8	12	16	20	24	24C	14	18	Judge	Ring
NOV A					1					Danielle LaGrave	1
NOV B			2		1	2				Danielle LaGrave	1
NOV P		1		2	2					Danielle LaGrave	1
NOV		1	2	2	4	2				TOTAL RUNS	11
Division	4	8	12	16	20	24	24C	14	18	Judge	Ring
OPN					1	3	1			Danielle LaGrave	1
OPN P		1		4	1					Danielle LaGrave	1
OPN		3		5	4	1				TOTAL RUNS	13
Division	4	8	12	16	20	24	24C	14	18	Judge	Ring
EX		4		1	2	1				Danielle LaGrave	1
EX P		3		3	2					Danielle LaGrave	1
MAS		6	5	7	14	5	1			Danielle LaGrave	1
MAS P	1	8	2	10	5					Danielle LaGrave	1
EXC	1	21	7	21	23	6	1			TOTAL RUNS	80
Division	4	8	12	16	20	24	24C	14	18	Judge	Ring
PRM		1	2		9	5	1			Danielle LaGrave	1
PRM P		2	1	3	1					Danielle LaGrave	1
PREM		3	3	3	10	5	1			TOTAL RUNS	25
Division	4	8	12	16	20	24	24C	14	18	Judge	Ring
NOV A					1					Pamela Nettles	2
NOV B			2	1	1	5				Pamela Nettles	2
NOV P		1	1	1	1					Pamela Nettles	2
NOV		1	3	2	3	5				TOTAL RUNS	14
Division	4	8	12	16	20	24	24C	14	18	Judge	Ring
OPEN		2		1	2	2				Pamela Nettles	2
OPEN P		1		5	1					Pamela Nettles	2
OPN		3		6	3	2				TOTAL RUNS	14
Division	4	8	12	16	20	24	24C	14	18	Judge	Ring
EX		2	1	2	3					Pamela Nettles	2
EX P		3		4	2					Pamela Nettles	2
MAS		8	4	7	16	6	1			Pamela Nettles	2
MAS P	1	8	2	11	4					Pamela Nettles	2
EXC	1	21	7	24	25	6	1			TOTAL RUNS	85
Division	4	8	12	16	20	24	24C	14	18	Judge	Ring
PRM		2	1		9	3	1			Danielle LaGrave	1
PRM P		2	1	3	1					Danielle LaGrave	1
PREM		4	2	3	10	3	1			TOTAL RUNS	23
Division	4	8	12	16	20	24	24C	14	18	Judge	Ring
NOV B		2		1	1	2				Pamela Nettles	2
NOV P		1		1	2					Pamela Nettles	2
NOV		3		2	3	2				TOTAL RUNS	10
Division	4	8	12	16	20	24	24C	14	18	Judge	Ring
OPEN		1	1		1	2				Pamela Nettles	2
OPEN P		1		2	1					Pamela Nettles	2
OPN		2	1	2	2	2				TOTAL RUNS	9
Division	4	8	12	16	20	24	24C	14	18	Judge	Ring
EX		1			3	1				Pamela Nettles	2
EX P		1		2	1					Pamela Nettles	2
MAS		3	3		5					Pamela Nettles	2
MAS P		2		6	1					Pamela Nettles	2
EXC		7	3	8	10	1				TOTAL RUNS	29
Division	4	8	12	16	20	24	24C	14	18	Judge	Ring
PREF		5	1	14	2					Pamela Nettles	2
REG		5	3	9	10	8				Pamela Nettles	2
T2B		10	4	23	12	8				TOTAL RUNS	57
Judge Totals										Ring Totals	
Danielle LaGrave		152								Ring 1	152
Pamela Nettles		218								Ring 2	218

Sunday – 334 runs

STD		NOV										
Division	4	8	12	16	20	24	24C	14	18	Judge	Ring	
NOV B			1	16	20	24				Pamela Nettles	1	
NOV P			1	1	3					Pamela Nettles	1	
NOV			2	1	4	2				TOTAL RUNS	9	
STD		OPN										
Division	4	8	12	16	20	24	24C	14	18	Judge	Ring	
OPEN			2	1	6	1				Pamela Nettles	1	
OPEN P			1	2	3					Pamela Nettles	1	
OPN			3	1	2	9	1			TOTAL RUNS	16	
STD		EXC										
Division	4	8	12	16	20	24	24C	14	18	Judge	Ring	
EX			4	5	2	2				Pamela Nettles	1	
EX P			3	3	4					Pamela Nettles	1	
MAS			6	3	4	12	4	1		Pamela Nettles	1	
MAS P	1		7	2	12	3				Pamela Nettles	1	
EXC	1		20	5	24	21	6	1		TOTAL RUNS	78	
STD		PREM										
Division	4	8	12	16	20	24	24C	14	18	Judge	Ring	
PRM			2	3	4	2	1			Pamela Nettles	1	
PRM P			1	1	3					Pamela Nettles	1	
PREM			3	4	3	4	2	1		TOTAL RUNS	17	
JWW		NOV										
Division	4	8	12	16	20	24	24C	14	18	Judge	Ring	
NOV B				2	2	6				Danielle LaGrave	2	
NOV P			1		2					Danielle LaGrave	2	
NOV			1	2	4	6				TOTAL RUNS	13	
JWW		OPN										
Division	4	8	12	16	20	24	24C	14	18	Judge	Ring	
OPEN			2	1	5	3				Danielle LaGrave	2	
OPEN P			1	4	2					Danielle LaGrave	2	
OPN			3	1	4	7	3			TOTAL RUNS	18	
JWW		EXC										
Division	4	8	12	16	20	24	24C	14	18	Judge	Ring	
EX			2	5	3					Danielle LaGrave	2	
EX P			3	1	3					Danielle LaGrave	2	
MAS			7	2	4	14	5	1		Danielle LaGrave	2	
MAS P	1		7	2	13	3				Danielle LaGrave	2	
EXC	1		19	4	23	23	5	1		TOTAL RUNS	76	
JWW		PREM										
Division	4	8	12	16	20	24	24C	14	18	Judge	Ring	
PRM			1	1	4		1			Pamela Nettles	1	
PRM P			1	1	3					Pamela Nettles	1	
PREM			2	2	3	4	1			TOTAL RUNS	12	
FAST		NOV										
Division	4	8	12	16	20	24	24C	14	18	Judge	Ring	
NOV B			2	1	2	3				Danielle LaGrave	2	
NOV P					2					Danielle LaGrave	2	
NOV			2	1	4	3				TOTAL RUNS	10	
FAST		OPN										
Division	4	8	12	16	20	24	24C	14	18	Judge	Ring	
OPEN			1	1	2	2				Danielle LaGrave	2	
OPEN P				1	2					Danielle LaGrave	2	
OPN			1	2	4	2				TOTAL RUNS	9	
FAST		EXC										
Division	4	8	12	16	20	24	24C	14	18	Judge	Ring	
EX			1	1	2	1				Danielle LaGrave	2	
EX P			1	1	1					Danielle LaGrave	2	
MAS			4	2	1	6	1			Danielle LaGrave	2	
MAS P			3	3	1					Danielle LaGrave	2	
EXC			9	3	6	10	2			TOTAL RUNS	30	
T2B		T2B										
Division	4	8	12	16	20	24	24C	14	18	Judge	Ring	
PREF	1		4	2	8	2				Danielle LaGrave	2	
REG			5	2	5	9	8			Danielle LaGrave	2	
T2B	1		9	4	13	11	8			TOTAL RUNS	46	
Judge Totals										Ring Totals		
Danielle LaGrave		202								Ring 1	132	
Pamela Nettles		132								Ring 2	202	