

# Running Order Information

## Evergreen Afghan Hound Club Agility Trial

### Friday- Sunday, Jan. 15-17, 2016

**Argus Ranch Facility for Dogs - 35612 212th Way SE, Auburn, WA 98092**  
[www.argusranch.com](http://www.argusranch.com) - This trial will be held indoors at Argus Ranch.

### ***Driving Directions***

#### **From North or South End**

Take I-5, I-405, SR-167 to Highway 18 eastbound. Exit onto Auburn-Black Diamond Road eastbound. Turn RIGHT onto SE Green Valley Road (just past Neely Mansion). Follow for about 7.5 miles. Turn RIGHT onto 212th Way SE  
Take First LEFT into Argus Ranch and follow drive straight ahead to Arena and signed parking.

#### **From SR 169**

Turn onto SE Green Valley Road (in front of the Boondocks Nursery). Go about four miles. Turn LEFT onto 212th Way SE. Go over the Cement Bridge. (Whitney Bridge) Take First LEFT into ARGUS RANCH and follow drive straight ahead to Arena and signed parking.

### **Judging Information**

**Judges:** Nancy Kemna & Zachary Gulaboff Davis

**NOTE:** Due to entry numbers at closing, Saturday and Sunday Exc/Mas Fast class will be judged by Zachary Gulaboff Davis. As a result of the judge change, any exhibitor may request a refund for that class (Exc Fast on Sat and Sun) if they wish.

#### **Fri:**

Ring 1: Nancy Prem Std, Exc Std, Exc Jww, Prem Jww  
Ring 2: Zachary Exc Fast (Nancy), Open Fast, Nov Fast, Open Std, Nov Std, T2B, Open Jww, Nov Jww

#### **Sat/Sun:**

Ring 1: Nancy Prem Std, Exc Std, Exc Jww, Prem Jww  
Ring 2: Zachary Exc Fast, Open Fast, Nov Fast, Open Std, Nov Std, T2B, Open Jww, Nov Jww

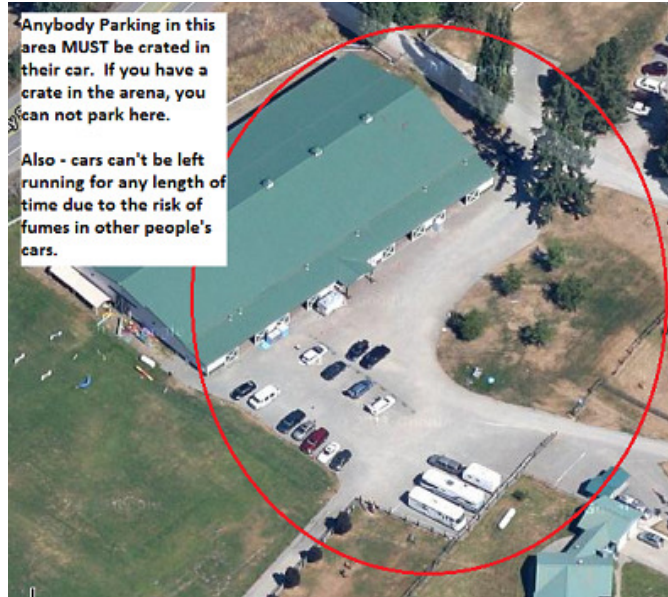
### **Call for Volunteer Help!!!!**

This is a small show, so we will need YOU to help set bars, run leashes, scribe, time, etc. If we all help out a little bit, the show will run very smoothly and we'll all get out to enjoy the weekend !  
Thanks for helping. We'll be doing a drawing for free entries of Std/Jww to a future EAHC show.

# Crating / Center Aisle / Parking Information

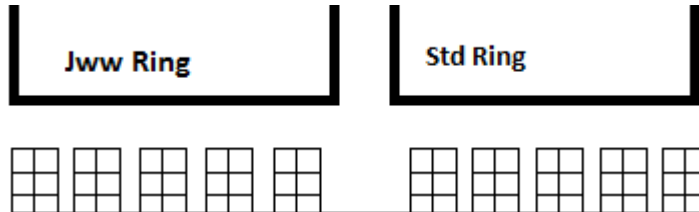
## Car Parking:

If you are parking in the area indicated on this diagram – basically anywhere near the Arena, you may not also have a crate inside. This area is reserved for ONLY those people that want to crate out of their cars. Also make sure to not run your car's engine excessively as that puts exhaust fumes in the car next to yours and gasses out those dogs !!!



## Crating Inside:

If you are crating in the arena, please use this crating layout instead of just putting crates up against the walls. Here is a simple picture of that style.



**Crating in rows as shown. This lets us get more people into the area than if we just go up against the wall. Please put your chairs along the rings.**

## Center Aisle:

Make sure to keep the center aisle clear for the dogs that are running. Please don't loiter there unless you are getting ready to run ☺

# Agility Trial Information

- Measurements:** If you have not been measured or indicated that you have a height card, you must do so before you run. The gate sheets will be highlighted to indicate if you need to have your dog measured or show its card. **A VMO is scheduled to be at the show, so measurements will be official.**
- Start Times:** See the charts below
- Class Schedule:** See the charts below
- Walkthroughs:** There will be a single walkthrough for each class with Exc Std and Jww split by height as indicated in the charts.
- Veterinarian:** 24-Hour Veterinarian: Sumner Vet Hospital, 16024 60<sup>th</sup> St. E, Sumner, WA 98390 253-863-2258
- Directions:** From Argus Ranch – turn left onto 212<sup>th</sup> Way SE and drive about 2 miles to the top of the hill to the ‘T’. Take a left and immediate right to stay on 212<sup>th</sup> Way SE and continue south for 3.2 miles to WA-164<sup>th</sup>/SE 436<sup>th</sup> St. Turn left for 2.0 miles and turn right on 244<sup>th</sup> Ave SE. Drive for 2 more miles to WA-410 (Enumclaw Buckley Rd) and turn right. Drive for 10.8 miles to the 166<sup>th</sup> Ave Exit and turn right onto Sumner Tapps Hwy E. Drive north for .3 miles and take a left onto 60<sup>th</sup> St. E Drive for .4 miles and the hospital is on the left.
- Moveups:** The deadline for moveups is Monday, Jan 11th, at 6PM. Moveups must be received in writing or email by that deadline. Day-to-Day moveups are being accepted for Saturday and Sunday but MUST be received no later than ½ hour after the last class of the current day.
- RVs:** All RV camping must be arranged with Argus Ranch. Contact Terri Kaluza at [arfreservations@gmail.com](mailto:arfreservations@gmail.com) for more details.

	Ring 1 – Nancy Kemna	Ring 2 – Zachary Gulaboff Davis	
<p><b>Friday</b> <b>9:00 AM start</b></p> <p>Tall to Small</p> <p>Nancy will start in Ring 2 with Exc Fast. After that, Premier Std will start as soon as possible and then both rings will proceed as indicated.</p> <p>The times in the charts are approximations only. Make sure to be ready to run earlier or later depending on how the day gos.</p>			
			Exc Fast – Judged by Nancy
			Walk
			9:00 Run
			Course Change
		Premier Standard	
		Walk	
	9:45	Run	Open Fast
		Course Change	Walk
			10:00 Run
		Course Change	
	Exc Standard		
	Walk 26-20		
10:40	Run 26-20	Nov Fast	
		Walk	
		11:00 Run	
		Course Change	
	Walk 16-4		
11:40	Run 16-4	Open Std	
		Walk	
		11:45 Run	
		Course Change	
	Course Change		
		Nov Std	
		Walk	
		12:30 Run	
		Course Change	
	Exc Jumpers		
	Walk 26-20		
1:00	Run 26-20	T2B	
		Walk	
		1:30 Run	
		Course Change	
	Walk 16-4		
1:50	Run 16-4	Open Jww	
		Walk	
		2:30 Run	
	Course Change		
		Course Change	
	Premier Jumpers		
	Walk		
3:00	Run	Nov Jww	
		Walk	
3:20	Done	3:20 Run	
		3:30 done	

	Ring 1 – Nancy Kemna	Ring 2 – Zachary Gulaboff Davis	
<p><b>Saturday</b> <b>8:30 AM start</b></p> <p>Small to Tall</p> <p>Zachary Gulaboff Davis is judging Exc Fast. Premier Std will start ½ hour later.</p> <p><b>IMPORTANT:</b> If you are in BOTH Exc Fast and Prem Std, you may need to walk both courses before 8:30 !!!!</p>			
	9:00	<p><b>Premier Standard</b> Walk Run</p> <p>Course Change</p> <p><b>Exc Standard</b> Walk 4-16 Run 4-16</p>	<p><b>Exc Fast</b> Walk Run</p> <p>8:30</p> <p><b>Open Fast</b> Walk Run</p> <p>9:45</p> <p>Course Change</p> <p><b>Nov Fast</b> Walk Run</p> <p>10:45</p> <p>Course Change</p>
	11:50	<p>Walk 20-26 Run 20-26</p> <p>Course Change</p> <p><b>Exc Jumpers</b> Walk 4-16 Run 4-16</p>	<p><b>Open Std</b> Walk Run</p> <p>11:30</p> <p>Course Change</p> <p><b>Nov Std</b> Walk Run</p> <p>12:30</p> <p>Course Change</p>
	1:30	<p>Walk 20-26 Run 20-26</p> <p>Course Change</p> <p><b>Prem Jumpers</b> Walk Run</p>	<p><b>T2B</b> Walk Run</p> <p>1:30</p> <p>Course Change</p> <p><b>Open Jww</b> Walk Run</p> <p>3:00</p> <p>Course Change</p>
	4:25	<p>Walk Run</p>	<p><b>Nov Jww</b> Walk Run</p> <p>4:00</p> <p>4:10 done</p>
	4:50	done	

	Ring 1 – Nancy Kemna	Ring 2 – Zachary Gulaboff Davis
<p><b>Sunday</b> <b>8:30 AM start</b></p> <p>Tall to Small</p> <p>Zachary Gulaboff Davis is judging Exc Fast. Premier Std will start ½ hour later.</p> <p><b>IMPORTANT:</b> If you are in BOTH Exc Fast and Prem Std, you may need to walk both courses before 8:30 !!!!</p>	<p><b>Premier Standard</b> Walk Run 9:00</p> <p>Course Change</p> <p><b>Exc Standard</b> Walk 26-20 Run 26-20 10:00</p> <p>Walk 16-4 Run 16-4 11:15</p> <p>Course Change</p> <p><b>Exc Jumpers</b> Walk 26-20 Run 26-20 1:10</p> <p>Walk 16-4 Run 16-4 2:15</p> <p>Course Change</p> <p><b>Prem Jumpers</b> Walk Run 3:45</p> <p>4:10 done</p>	<p><b>Exc Fast</b> Walk Run 8:30</p> <p><b>Open Fast</b> Walk Run 9:45</p> <p>Course Change</p> <p><b>Nov Fast</b> Walk Run 10:30</p> <p>Course Change</p> <p><b>Open Std</b> Walk Run 11:15</p> <p>Course Change</p> <p><b>Nov Std</b> Walk Run 12:15</p> <p>Course Change</p> <p><b>T2B</b> Walk Run 1:15</p> <p>Course Change</p> <p><b>Open Jww</b> Walk Run 2:35</p> <p>Course Change</p> <p><b>Nov Jww</b> Walk Run 3:30</p> <p>3:45 done</p>

The following tables do NOT show the order of classes. For that information, see the schedule charts above  
 The following entry stats are contingent on move-ups not yet received

## Friday – 323 runs

STD		NOV											
<b>Division</b>	<b>4</b>	<b>8</b>	<b>12</b>	<b>16</b>	<b>20</b>	<b>24</b>	<b>26</b>	<b>14</b>	<b>18</b>	<b>Judge</b>	<b>Ring</b>		
NOV B		2		2	4	1				Zachary Gulaboff Davis		1	
NOV		2		2	4	1				<b>TOTAL RUNS</b>	<b>9</b>		
STD		OPN											
<b>Division</b>	<b>4</b>	<b>8</b>	<b>12</b>	<b>16</b>	<b>20</b>	<b>24</b>	<b>26</b>	<b>14</b>	<b>18</b>	<b>Judge</b>	<b>Ring</b>		
OPEN		1		2	2	2				Zachary Gulaboff Davis		1	
OPN		1		2	2	2				<b>TOTAL RUNS</b>	<b>7</b>		
STD		EXC											
<b>Division</b>	<b>4</b>	<b>8</b>	<b>12</b>	<b>16</b>	<b>20</b>	<b>24</b>	<b>26</b>	<b>14</b>	<b>18</b>	<b>Judge</b>	<b>Ring</b>		
EX			2	1	1	2	1			Nancy Kemna		2	
MAS		5	13	10	25	6	1			Nancy Kemna		2	
MAS P	5	3	5	5	1					Nancy Kemna		2	
EXC	5	8	20	16	27	8	2			<b>TOTAL RUNS</b>	<b>86</b>		
STD		PREM											
<b>Division</b>	<b>4</b>	<b>8</b>	<b>12</b>	<b>16</b>	<b>20</b>	<b>24</b>	<b>26</b>	<b>14</b>	<b>18</b>	<b>Judge</b>	<b>Ring</b>		
PRM		1	5	4	12	2				Nancy Kemna		2	
PRM P	1			1	1					Nancy Kemna		2	
PREM	1	1	5	5	13	2				<b>TOTAL RUNS</b>	<b>27</b>		
JWW		NOV											
<b>Division</b>	<b>4</b>	<b>8</b>	<b>12</b>	<b>16</b>	<b>20</b>	<b>24</b>	<b>26</b>	<b>14</b>	<b>18</b>	<b>Judge</b>	<b>Ring</b>		
NOV B		1		2	1	1				Zachary Gulaboff Davis		1	
NOV		1		2	1	1				<b>TOTAL RUNS</b>	<b>5</b>		
JWW		OPN											
<b>Division</b>	<b>4</b>	<b>8</b>	<b>12</b>	<b>16</b>	<b>20</b>	<b>24</b>	<b>26</b>	<b>14</b>	<b>18</b>	<b>Judge</b>	<b>Ring</b>		
OPEN		2		1	4	3				Zachary Gulaboff Davis		1	
OPEN P		1			1					Zachary Gulaboff Davis		1	
OPN		3		1	5	3				<b>TOTAL RUNS</b>	<b>12</b>		
JWW		EXC											
<b>Division</b>	<b>4</b>	<b>8</b>	<b>12</b>	<b>16</b>	<b>20</b>	<b>24</b>	<b>26</b>	<b>14</b>	<b>18</b>	<b>Judge</b>	<b>Ring</b>		
EX			2	3	2	2				Nancy Kemna		2	
MAS		4	12	9	24	7	2			Nancy Kemna		2	
MAS P	5	3	5	5	1					Nancy Kemna		2	
EXC	5	7	19	17	27	9	2			<b>TOTAL RUNS</b>	<b>86</b>		
JWW		PREM											
<b>Division</b>	<b>4</b>	<b>8</b>	<b>12</b>	<b>16</b>	<b>20</b>	<b>24</b>	<b>26</b>	<b>14</b>	<b>18</b>	<b>Judge</b>	<b>Ring</b>		
PRM		1	5	4	11	2				Nancy Kemna		2	
PRM P	1			2						Nancy Kemna		2	
PREM	1	1	5	6	11	2				<b>TOTAL RUNS</b>	<b>26</b>		
FAST		NOV											
<b>Division</b>	<b>4</b>	<b>8</b>	<b>12</b>	<b>16</b>	<b>20</b>	<b>24</b>	<b>26</b>	<b>14</b>	<b>18</b>	<b>Judge</b>	<b>Ring</b>		
NOV B					4	1				Zachary Gulaboff Davis		1	
NOV					4	1				<b>TOTAL RUNS</b>	<b>5</b>		
FAST		OPN											
<b>Division</b>	<b>4</b>	<b>8</b>	<b>12</b>	<b>16</b>	<b>20</b>	<b>24</b>	<b>26</b>	<b>14</b>	<b>18</b>	<b>Judge</b>	<b>Ring</b>		
OPEN		2	2	2	1	3				Zachary Gulaboff Davis		1	
OPEN P		1								Zachary Gulaboff Davis		1	
OPN		3	2	2	1	3				<b>TOTAL RUNS</b>	<b>11</b>		
FAST		EXC											
<b>Division</b>	<b>4</b>	<b>8</b>	<b>12</b>	<b>16</b>	<b>20</b>	<b>24</b>	<b>26</b>	<b>14</b>	<b>18</b>	<b>Judge</b>	<b>Ring</b>		
EX				1	3					Nancy Kemna		2	
EX P	2		1	1						Nancy Kemna		2	
MAS		1	2		10	2				Nancy Kemna		2	
MAS P	1		1	1	1					Nancy Kemna		2	
EXC	3	1	4	3	14	2				<b>TOTAL RUNS</b>	<b>27</b>		
T2B		T2B											
<b>Division</b>	<b>4</b>	<b>8</b>	<b>12</b>	<b>16</b>	<b>20</b>	<b>24</b>	<b>26</b>	<b>14</b>	<b>18</b>	<b>Judge</b>	<b>Ring</b>		
PREF	1		1							Zachary Gulaboff Davis		1	
REG		1	1	1	12	5				Zachary Gulaboff Davis		1	
T2B	1	1	2	1	12	5				<b>TOTAL RUNS</b>	<b>22</b>		
<b>Judge Totals</b>										<b>Ring Totals</b>			
Nancy Kemna		252								Ring 1	71		
Zachary Gulaboff		71								Ring 2	252		





# Sunday – 454 runs

STD		NOV										
<b>Division</b>	<b>4</b>	<b>8</b>	<b>12</b>	<b>16</b>	<b>20</b>	<b>24</b>	<b>26</b>	<b>14</b>	<b>18</b>	<b>Judge</b>	<b>Ring</b>	
NOV B		1	1	1	7					Zachary Gulaboff Davis		1
NOV P		2								Zachary Gulaboff Davis		1
NOV		3	1	1	7					<b>TOTAL RUNS</b>		12
STD		OPN										
<b>Division</b>	<b>4</b>	<b>8</b>	<b>12</b>	<b>16</b>	<b>20</b>	<b>24</b>	<b>26</b>	<b>14</b>	<b>18</b>	<b>Judge</b>	<b>Ring</b>	
OPEN				3	4	2				Zachary Gulaboff Davis		1
OPEN P		2								Zachary Gulaboff Davis		1
OPN		2		3	4	2				<b>TOTAL RUNS</b>		11
STD		EXC										
<b>Division</b>	<b>4</b>	<b>8</b>	<b>12</b>	<b>16</b>	<b>20</b>	<b>24</b>	<b>26</b>	<b>14</b>	<b>18</b>	<b>Judge</b>	<b>Ring</b>	
EX			3	4	4	3	1			Nancy Kemna		2
EX P			1		1					Nancy Kemna		2
MAS		7	15	15	29	16	2			Nancy Kemna		2
MAS P	7	7	7	7						Nancy Kemna		2
EXC	7	14	26	26	34	19	3			<b>TOTAL RUNS</b>		129
STD		PREM										
<b>Division</b>	<b>4</b>	<b>8</b>	<b>12</b>	<b>16</b>	<b>20</b>	<b>24</b>	<b>26</b>	<b>14</b>	<b>18</b>	<b>Judge</b>	<b>Ring</b>	
PRM		2	5	2	11	5				Nancy Kemna		2
PRM P	1		1	1						Nancy Kemna		2
PREM	1	2	6	3	11	5				<b>TOTAL RUNS</b>		28
JWW												
<b>Division</b>	<b>4</b>	<b>8</b>	<b>12</b>	<b>16</b>	<b>20</b>	<b>24</b>	<b>26</b>	<b>14</b>	<b>18</b>	<b>Judge</b>	<b>Ring</b>	
NOV B		1		1	5					Zachary Gulaboff Davis		1
NOV P		2								Zachary Gulaboff Davis		1
NOV		3		1	5					<b>TOTAL RUNS</b>		9
JWW												
<b>Division</b>	<b>4</b>	<b>8</b>	<b>12</b>	<b>16</b>	<b>20</b>	<b>24</b>	<b>26</b>	<b>14</b>	<b>18</b>	<b>Judge</b>	<b>Ring</b>	
OPEN				2	6	2				Zachary Gulaboff Davis		1
OPEN P		3			1					Zachary Gulaboff Davis		1
OPN		3		2	7	2				<b>TOTAL RUNS</b>		14
JWW												
<b>Division</b>	<b>4</b>	<b>8</b>	<b>12</b>	<b>16</b>	<b>20</b>	<b>24</b>	<b>26</b>	<b>14</b>	<b>18</b>	<b>Judge</b>	<b>Ring</b>	
EX			4	3	3	2				Nancy Kemna		2
EX P	1	1			1					Nancy Kemna		2
MAS		7	13	17	31	18	3			Nancy Kemna		2
MAS P	6	5	7	8						Nancy Kemna		2
EXC	7	13	24	28	35	20	3			<b>TOTAL RUNS</b>		130
JWW												
<b>Division</b>	<b>4</b>	<b>8</b>	<b>12</b>	<b>16</b>	<b>20</b>	<b>24</b>	<b>26</b>	<b>14</b>	<b>18</b>	<b>Judge</b>	<b>Ring</b>	
PRM		2	4	3	14	6				Nancy Kemna		2
PRM P	1		1	2						Nancy Kemna		2
PREM	1	2	5	5	14	6				<b>TOTAL RUNS</b>		33
FAST												
<b>Division</b>	<b>4</b>	<b>8</b>	<b>12</b>	<b>16</b>	<b>20</b>	<b>24</b>	<b>26</b>	<b>14</b>	<b>18</b>	<b>Judge</b>	<b>Ring</b>	
NOV B					3	2				Zachary Gulaboff Davis		1
NOV P		1								Zachary Gulaboff Davis		1
NOV		1			3	2				<b>TOTAL RUNS</b>		6
FAST												
<b>Division</b>	<b>4</b>	<b>8</b>	<b>12</b>	<b>16</b>	<b>20</b>	<b>24</b>	<b>26</b>	<b>14</b>	<b>18</b>	<b>Judge</b>	<b>Ring</b>	
OPEN			2	2	1	2				Zachary Gulaboff Davis		1
OPEN P		2								Zachary Gulaboff Davis		1
OPN		2	2	2	1	2				<b>TOTAL RUNS</b>		9
FAST												
<b>Division</b>	<b>4</b>	<b>8</b>	<b>12</b>	<b>16</b>	<b>20</b>	<b>24</b>	<b>26</b>	<b>14</b>	<b>18</b>	<b>Judge</b>	<b>Ring</b>	
EX			1	2	3					Zachary Gulaboff Davis		1
EX P	2	1	1							Zachary Gulaboff Davis		1
MAS		1	2	1	10	4				Zachary Gulaboff Davis		1
MAS P	1		1	1	1					Zachary Gulaboff Davis		1
EXC	3	2	5	4	14	4				<b>TOTAL RUNS</b>		32
T2B												
<b>Division</b>	<b>4</b>	<b>8</b>	<b>12</b>	<b>16</b>	<b>20</b>	<b>24</b>	<b>26</b>	<b>14</b>	<b>18</b>	<b>Judge</b>	<b>Ring</b>	
PREF	1		1	1						Zachary Gulaboff Davis		1
REG		2	3	6	19	8				Zachary Gulaboff Davis		1
T2B	1	2	4	7	19	8				<b>TOTAL RUNS</b>		41
<b>Judge Totals</b>												
<b>Nancy Kemna</b>		320								<b>Ring 1</b>	134	
<b>Zachary Gulaboff</b>		134								<b>Ring 2</b>	320	