

Mt. Rainier Sporting Spaniel Assoc. - Running Order Information

Feb. 6-8, 2015

LOCATION FOR TRIAL

Argus Ranch Facility for Dogs -35612 212th Way SE, Auburn, WA 98092
www.argusranch.com - This trial will be held indoors on dirt at Argus Ranch.

Driving Directions

From North or South End

Take I-5, I-405, SR-167 to Highway 18 eastbound. Exit onto Auburn-Black Diamond Road eastbound. Turn RIGHT onto SE Green Valley Road (just past Neely Mansion). Follow for about 7.5 miles. Turn RIGHT onto 212th Way SE. Take first LEFT into Argus Ranch and follow drive straight ahead to Arena and signed parking.

From SR 169 Southbound

Right onto Roberts Drive (in front of the Coal Car), go approximately four miles. Left onto 218th Street. At bottom of the hill is a stop sign. Go straight across over cement bridge (Whitney Bridge). Take First Left into Argus Ranch and follow drive straight ahead to Arena and signed parking.

From SR-169 Northbound

Turn LEFT onto SE Green Valley Road (in front of the Boondocks Nursery). Go about four miles. Turn LEFT onto 212th Way SE. Go over the Cement Bridge. (Whitney Bridge). Take First LEFT into ARGUS RANCH and follow drive straight ahead to Arena and signed parking.

Agility Trial Information

- Judges:** Robyn Veenema & Terry Le Clair
- Start Times:** Friday 10:00 AM, Weekend 9:00 AM – Rings will run at the same time.
- Class Schedule:** See the charts below
- Walkthroughs:** There will be a single walkthrough for each class except Exc Std and Jww which will be split by height. We are currently planning 2 walkthrough groups (small: 4-16, tall: 20-26). We MAY choose to walk/walk/run each group if needed for workers and other conflicts.
- Veterinarian:** 24-Hour Veterinarian: Sumner Vet Hospital, 16024 60th St. E, Sumner, WA 98390 253-863-2258
Directions: From Argus Ranch – turn left onto 212th Way SE and drive about 2 miles to the top of the hill to the 'T'. Take a left and immediate right to stay on 212th Way SE and continue south for 3.2 miles to WA-164th/SE 436th St. Turn left for 2.0 miles and turn right on 244th Ave SE. Drive for 2 more miles to WA-410 (Enumclaw Buckley Rd) and turn right. Drive for 10.8 miles to the 166th Ave Exit and turn right onto Sumner Tapps Hwy E. Drive north for .3 miles and take a left onto 60th St. E Drive for .4 miles and the hospital is on the left.
- Moveups:** The deadline for moveups is Monday Feb. 2nd, at 6PM. Moveups must be received in writing or email by that deadline. Day-to-day moveups are being accepted for Saturday and Sunday.
- Workers:** We are using the white board for workers. Please help out where you can ☺.
- Setup:** Setup will be available after 4PM on Thursday. Argus Ranch needs the time to prepare the surface.
- RVs:** All RV camping must be arranged with Argus Ranch. Contact Terri Kaluza at arfreservations@gmail.com for more details.

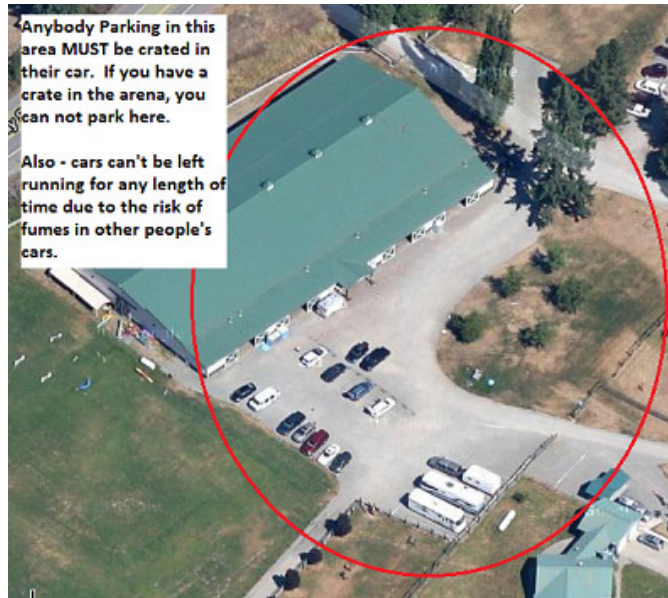
Judges Dinner on Saturday Night

The club is planning a judge's dinner on site Saturday night if there is enough response. Dinner to be prepared by one of the club members (an Awesome chef !). Bring your own beverage of choice... No cost – but must RSVP to Karin Cartwright at arborfield@hotmail.com by Monday 2/2/2015 if you are planning on attending. Location set for Brutus Hall.

Crating / Parking Information

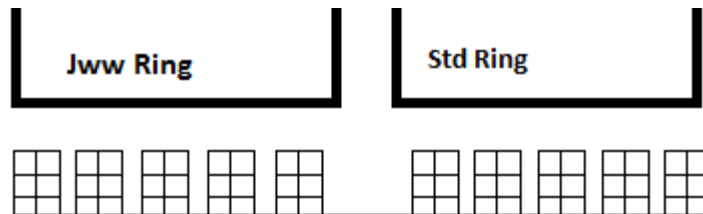
Car Parking:

If you are parking in the area indicated on this diagram – basically anywhere near the Arena, you may not also have a crate inside. This area is reserved for ONLY those people that want to crate out of their cars. Also make sure to not run your car's engine excessively as that puts exhaust fumes in the car next to yours and gasses out those dogs !!!



Crating Inside:

If you are crating in the arena, please use the following crating layout instead of just putting crates up against the walls. Here is a simple picture.



Crating in rows as shown. This lets us get more people into the area than if we just go up against the wall. Please put your chairs along the rings.

	Ring 1 – Terry Le Clair	Ring 2 – Robyn Veenema
Friday 10:00 AM start <u>Small to Tall</u> Times other than Exc Fast and T2B are rough approximates.	10:00 T2B Walk Run Course Change	10:30 Exc Fast Walk Run Course Change
	10:50 Exc Std Walk 4-16 Run 4-16	11:30 Open Fast Walk Run Course Change
	12:00 Walk 20-26 Run 20-26	12:00 Nov Fast Walk Run Course Change
	Course Change 1:00 Open Std Walk Run	12:30 Exc Jww Walk 4-16 Run 4-16
	Course Change 1:50 Novice Std Walk Run	1:25 Walk 20-26 Run 20-26
	2:10 Done	Course Change 2:20 Open Jww Walk Run
		Course Change 3:00 Novice Jww Walk Run
		3:15 Done

	Ring 1 – Robyn Veenema	Ring 2 – Terry Le Clair
Saturday 9:00 AM start <u>Tall to Small</u> Times other than Exc Fast and T2B are rough approximates.	9:00 T2B Walk Run	9:30 Exc Fast Walk Run
	10:00 Exc Std Walk 26-20 Run 26-20	Course Change 10:45 Open Fast Walk Run
	11:00 Walk 16-4 Run 16-4	Course Change 11:15 Nov Fast Walk Run
	Course Change	Course Change 11:45 Exc Jww Walk 20-26 Run 20-26
	12:50 Open Std Walk Run	Walk 16-4 Run 16-4
	Course Change	Course Change
	1:30 Novice Std Walk Run	Course Change
	Course Change	2:00 Open Jww Walk Run
	1:45 Done	Course Change
		3:00 Done

	Ring 1 – Terry Le Clair	Ring 2 – Robyn Veenema
Sunday 9:00 AM start <u>Small to Tall</u> Times other than Exc Fast and T2B are rough approximates.	9:00 T2B Walk Run	
	Course Change	9:30 Exc Fast Walk Run
	9:50 Exc Std Walk 4-16 Run 4-16	Course Change
		10:30 Open Fast Walk Run
		Course Change
	11:15 Walk 20-26 Run 20-26	11:00 Nov Fast Walk Run
	Course Change	Course Change
	12:45 Open Std Walk Run	11:45 Exc Jww Walk 4-16 Run 4-16
	Course Change	12:45 Walk 20-26 Run 20-26
	1:40 Novice Std Walk Run	Course Change
2:00 Done	2:00 Open Jww Walk Run	
	Course Change	
	2:45 Novice Jww Walk Run	
	3:00 Done	

Saturday 371 runs

STD	NOV												
Division	4	8	12	16	20	24	26	14	18	Judge	Ring		
NOV A			1		1					Robyn Veenema	1		
NOV B			1		1	3	1			Robyn Veenema	1		
NOV P		1			1					Robyn Veenema	1		
NOV		1	2		3	3	1			TOTAL RUNS	10		
Division	4	8	12	16	20	24	26	14	18	Judge	Ring		
OPN			1		4	3				Robyn Veenema	1		
OPN P		1	1		1					Robyn Veenema	1		
OPN		1	2		5	3				TOTAL RUNS	11		
Division	4	8	12	16	20	24	26	14	18	Judge	Ring		
EX		1	3	2	4	2				Robyn Veenema	1		
EX P			1							Robyn Veenema	1		
MAS		10	13	18	25	13	5			Robyn Veenema	1		
MAS P	4	2	6	6	3					Robyn Veenema	1		
EXC	4	13	23	26	32	15	5			TOTAL RUNS	118		
Division	4	8	12	16	20	24	26	14	18	Judge	Ring		
NOV A			1		1					Terry Le Clair	2		
NOV B			1		1	2	1			Terry Le Clair	2		
NOV P		1			1					Terry Le Clair	2		
NOV		1	2		3	2	1			TOTAL RUNS	9		
Division	4	8	12	16	20	24	26	14	18	Judge	Ring		
OPN			3	1	3	5				Terry Le Clair	2		
OPN P					1					Terry Le Clair	2		
OPN			3	1	4	5				TOTAL RUNS	13		
Division	4	8	12	16	20	24	26	14	18	Judge	Ring		
EX		1		1	4	2				Terry Le Clair	2		
EX P			1							Terry Le Clair	2		
MAS		11	14	19	25	14	5			Terry Le Clair	2		
MAS P	4	3	8	5	3					Terry Le Clair	2		
EXC	4	15	23	25	32	16	5			TOTAL RUNS	120		
Division	4	8	12	16	20	24	26	14	18	Judge	Ring		
NOV B			1	1		1	1			Terry Le Clair	2		
NOV P		1								Terry Le Clair	2		
NOV		1	1	1		1	1			TOTAL RUNS	5		
Division	4	8	12	16	20	24	26	14	18	Judge	Ring		
OPN				1	1	2				Terry Le Clair	2		
OPN P	1									Terry Le Clair	2		
OPN	1			1	1	2				TOTAL RUNS	5		
Division	4	8	12	16	20	24	26	14	18	Judge	Ring		
EX		1	2		6		1			Terry Le Clair	2		
EX P		1								Terry Le Clair	2		
MAS		2	2	3	13	6	1			Terry Le Clair	2		
MAS P			1	3						Terry Le Clair	2		
EXC	4	5	6	19	6	2				TOTAL RUNS	42		
Division	4	8	12	16	20	24	26	14	18	Judge	Ring		
PREF		1								Robyn Veenema	1		
REG		4	4	5	15	7	2			Robyn Veenema	1		
T2B		5	4	5	15	7	2			TOTAL RUNS	38		
Judge Totals										Ring Totals			
Robyn Veenema	177											Ring 1	177
Terry Le Clair	194											Ring 2	194

Sunday 380 runs

STD	NOV											
Division	4	8	12	16	20	24	26	14	18	Judge	Ring	
NOV A			1							Terry Le Clair	1	
NOV B			1	3		2				Terry Le Clair	1	
NOV P		1		1	1					Terry Le Clair	1	
NOV		1	2	4	1	2				TOTAL RUNS	10	
Division	4	8	12	16	20	24	26	14	18	Judge	Ring	
OPEN			1	3	6	5				Terry Le Clair	1	
OPEN P			2							Terry Le Clair	1	
OPN			3	3	6	5				TOTAL RUNS	17	
Division	4	8	12	16	20	24	26	14	18	Judge	Ring	
EX		1	2	2	5	3				Terry Le Clair	1	
EX P			1	1						Terry Le Clair	1	
MAS		8	13	16	25	16	3			Terry Le Clair	1	
MAS P	4	2	7	6	7					Terry Le Clair	1	
EXC	4	11	23	25	37	19	3			TOTAL RUNS	122	
Division	4	8	12	16	20	24	26	14	18	Judge	Ring	
NOV A			1							Robyn Veenema	2	
NOV B			1	3	2	2				Robyn Veenema	2	
NOV P		1		1	1					Robyn Veenema	2	
NOV		1	2	4	3	2				TOTAL RUNS	12	
Division	4	8	12	16	20	24	26	14	18	Judge	Ring	
OPEN			2	4	3	5				Robyn Veenema	2	
OPN			2	4	3	5				TOTAL RUNS	14	
Division	4	8	12	16	20	24	26	14	18	Judge	Ring	
EX		1		1	4	3				Robyn Veenema	2	
EX P			2	1						Robyn Veenema	2	
MAS		9	14	16	27	18	3			Robyn Veenema	2	
MAS P	4	2	8	5	7					Robyn Veenema	2	
EXC	4	12	24	23	38	21	3			TOTAL RUNS	125	
Division	4	8	12	16	20	24	26	14	18	Judge	Ring	
NOV B				2		1				Robyn Veenema	2	
NOV P		1		1	2					Robyn Veenema	2	
NOV		1		3	2	1				TOTAL RUNS	7	
Division	4	8	12	16	20	24	26	14	18	Judge	Ring	
OPEN				2	2	3				Robyn Veenema	2	
OPN				2	2	3				TOTAL RUNS	7	
Division	4	8	12	16	20	24	26	14	18	Judge	Ring	
EX			1		4	1				Robyn Veenema	2	
MAS		2	2	4	12	5	2			Robyn Veenema	2	
MAS P				2						Robyn Veenema	2	
EXC		2	3	6	16	6	2			TOTAL RUNS	35	
Division	4	8	12	16	20	24	26	14	18	Judge	Ring	
PREF			1							Terry Le Clair	1	
REG		2	3	5	15	3	2			Terry Le Clair	1	
T2B		2	4	5	15	3	2			TOTAL RUNS	31	
Judge Totals										Ring Totals		
Robyn Veenema										200	Ring 1	180
Terry Le Clair										180	Ring 2	200