

Bell Vernon Kennel Association
Running Order and Class Information April 23-25, 2021
Fun Fur Paws – Mt. Vernon, WA

I-5 North/South: Take Exit #218 (Starbird Rd) and East (Southbound turn left, Northbound turn right). Continue East to the 4-way stop at Bulson Rd and turn left. Follow Bulson Rd. to the intersection with Tyee Rd (0.7 mi). Turn left and then after a short distance, turn right onto Stargate Place (look for the sign for Fun Fur Paws). Follow the road to the arena and parking.

Judge: Jan Skurzynski & Dale Mahoney

Class Schedule: See charts below: Start 10:00 AM Friday and 9:00 AM on weekend

Opening/Closing: Opened 3/10/21, closed 4/16/21

Walkthroughs: There will be split walkthroughs as shows on the charts. There will be plenty of walkthrough time for each class, so don't worry. ☺ We may need to combine or alter walkthrus slightly due to COVID

Conflicts: We have tried to structure the schedule to reduce conflicts, but they are simply a fact of life in agility. If you are conflicted between rings, make sure to mark your dog as a conflict. We can arrange to have you run with a different height group or something. Come find us at the score table so we can help!

Veterinarian: 24 Hour Pet Emergency Center, 14434 Avon Allen Rd., Mt. Vernon, WA 360-848-5911
Chuckanut Valley Veterinarian (staffed 24/7), 896 N. Burlington Rd., Burlington, WA 360-757-3722

Moveups: The deadline for moveups is 4/19/21 at 6PM. Moveups must be received in writing or email by that deadline. Day-to-Day moveups are being accepted for Saturday and Sunday.

Setup and crating: **There is NO general crating allowed in the building. Due to the COVID limits on number of participants in the building at a time, we need the capacity to handle simultaneous walkthroughs.**

Popup tents and crating is available along the West fence and North grass areas. If you are crating from your car, make sure to leave windows/doors open for air flow. If using a popup or crate on the grass, please do NOT use mats or leave items overnight.

RVs: Overnight RV camping is limited and must be reserved. Email zuni@oakharbor.net with questions.

Workers: Even given all the new "rules" and capacity limits, we STILL need your help putting on the show. If you can help out for a class – or a day – let us know. We'll have a chief worker person coordinating thing and likely have the white boards setup like usual. THANKS!

Measuring: A volunteer measuring official will be on site but measuring during these COVID times is different. If your dog can be left at the table with you at least 6' away (safely!) and measured by a man in a mask, then we can potentially do the measure. Check with the score table for more info.

Important Housekeeping Info

Please use the exercise fields or the grassy areas around the parking lot to walk your dog. The fenced agility fields are off limits. Please pick up after your dog. If your dog accidentally relieves itself on the building structure, please use the cleaning sprays provided by Fun Fur Paws.

5 MPH Speed Limit at Fun Fur Paws

BE SURE TO CLEAN UP AFTER YOUR DOG(S)

This has gotten to be a big issue that needs to stop now. Many folks (including the owners) are telling us that they see lots of poo left around the grounds – especially in the exercise pens. Let's be responsible and pick up the POO !

COVID Specific Information



Masks must be worn at all times in the building

- Access Inside:** Under Phase 3, we can allow more people in the building but still must maintain appropriate distancing.
- No chairs are allowed inside
 - No outside spectators, guests, or vendors
 - We are still limited to necessary participants, but people ARE allowed to be inside and watch, but must still distance from each other 😊
- Food:** Due to the required COVID restrictions by the state, we will NOT be providing any food, snacks or refreshments at the show. Please bring your own provisions 😊
- Building Flow:** We need to limit contact between people in the building, so there will be a door to enter, and another to exit for each ring. The Jww/Fast/T2B ring will use the large roll up door on the south and the man door on the south west. The Prem/Std ring will use the doors on the east side and rollup on the north end.
- The area around the trial sec (ramp and upper platform) are off limits to the public unless you need to contact the trial secretary or judge for some reason.
- The following picture shows the door locations, parking, crating/popups outside, and other info.
- Course Maps:** We will not be providing exhibitor copies of course maps. Maps will be made available on our website sometime after 6PM the previous night and posted on site. If you need a copy, please print one at home.
- Leashes:** We are planning on a leash runner using a “grabber”, but AKC rules now allow you to put your leash in your pocket or tie it around your waist while you run. This allows only YOU to handle your leash. NOTE: if your dog grabs/tugs on the leash while running, the judge will signal an ‘E’. 😞
- Results:** Results will be posted outside the building and will be available on the same web page as the running order. We will also post results to the website as they are generated throughout the day, so you can get them remotely.
- COVID Waiver:** **Due to the nature of our current COVID environment, a waiver will be required to be signed by all persons at the facility. Those with minors, please sign a waiver for your child.**
- In this phase, exhibitors are not required to do health checks each day or have temperature checks. If you are feeling ill, please stay home and get better.
- All persons must present a signed COVID waiver the first day they are at the show. You will then be given a wristband that is good for the entire trial. We are working on an electronic waiver system. If that is not finished in time, if you can't access the online version, or have other people with you, we will also accept paper copies. An email will be sent on Wednesday with more information.

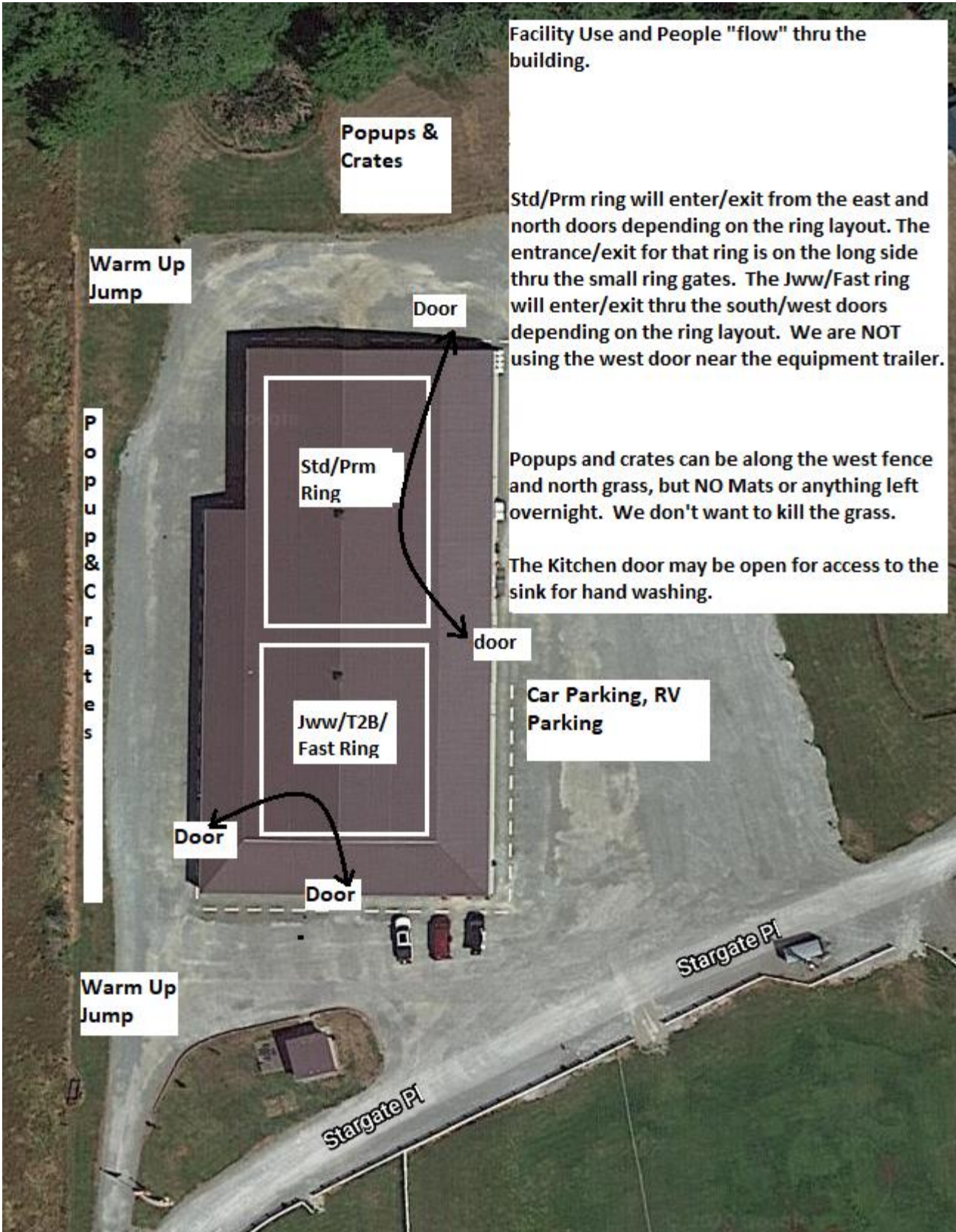
Gate Check-in: We will have a normal gate steward with a paper gate sheet, but will also be using a new electronic gate checking and monitoring system available by any internet or wifi enabled device with a web browser.

The new system allows you to check-in, mark conflict or absent, see progress, and live scores as they are entered into the computer. Please check the status to make sure your runs are correct.

Maps will also be available on the same page (internet or local) sometime after 6PM.

<p>Via Internet – Open a browser and go to</p> <p>www.r2agility.net</p>	<p>Via WiFi: Turn on WiFi. Select one of the following:</p> <p>R2Net (local router) – no password needed R2Gate (extended WiFi mesh) – pswd: r2agility1</p> <p>Open a browser and go to 192.168.1.7</p> <p>The local WiFi does NOT have an internet connection</p>
	

Most devices have a QR scanner (like QR Droid for Android devices) that will automatically scan the code and open up the browser to that address. Saves typing ☺



Facility Use and People "flow" thru the building.

Popups & Crates

Warm Up Jump

Door

Std/Prm ring will enter/exit from the east and north doors depending on the ring layout. The entrance/exit for that ring is on the long side thru the small ring gates. The Jww/Fast ring will enter/exit thru the south/west doors depending on the ring layout. We are NOT using the west door near the equipment trailer.

P
o
p
u
p
&
C
r
a
t
e
s

Std/Prm Ring

Popups and crates can be along the west fence and north grass, but NO Mats or anything left overnight. We don't want to kill the grass.

The Kitchen door may be open for access to the sink for hand washing.

door

Jww/T2B/
Fast Ring

Car Parking, RV
Parking

Door

Door

Warm Up Jump

Stargate Pl

Stargate Pl

**Assumption of the Risk and Waiver of Liability Relating to
Coronavirus/COVID-19**

The novel coronavirus, COVID -19, has been declared a worldwide pandemic by the World Health Organization (WHO). COVID-19 is EXTREMELY contagious and is believed to spread mainly from person to person contact. *As a result, federal, state & local governments and federal and state health agencies recommend social distancing and in many locations, have prohibited the congregation of large groups of people. ~ May 2020*

Fun Fur Paws LLC (FFP) & Catch the Wave Dog Training (Marie P) & Susan Shearer (SS) have put in place some new protocols & guidelines/preventative measures to help reduce the spread of COVID-19 at the FFP facility ; however , FFP CANNOT guarantee that you will not become exposed to, or infected with COVID-19. Further, attending classes/lessons, open practices, play days, any events, dog-related activities or exercising your dog on & in FFP property could increase your risk of contracting COVID-19.

By signing this agreement, I acknowledge the contagious nature of COVID-19 and voluntarily assume the risk that I may be exposed to, or infected by COVID-19 by attending dog related, or any activities at FFP and that such exposure or infection may result in personal injury, illness, permanent disability, or death. I understand that the risk of becoming exposed to, or infected by COVID-19 at FFP may result from the actions, omissions, or negligence of myself and others, including but not limited to FFP, trainers, instructors, assistant instructors, members, directors, governors, agents, event secretary, event-giving club, AKC, NADAC, CPE and the facility owner and any employees or volunteers of the aforementioned parties, and any "organizations approved judge", judging at events held at FFP.

I voluntary agree to assume all of the foregoing risks and accept sole responsibility for any injury to myself (including but not limited to; personal injury, illness, permanent disability, or death), illness, damage, loss, claim, liability, ore expense, of any kind, that I may experience or incur in connection with my attendance or participation in dog related activities held at FFP. On my behalf, I hereby release, covenant not to sue, discharge, and hold harmless the facility, FFP, its owners, Dave and Melissa Burton, instructors/ teachers, or instructors/teachers assistants, an event giving club, their members, directors, governors, agents, event secretary, any employees or volunteers of the aforementioned parties., and any AKC(American Kennel Club), NADAC(North American Dog Agility Council), CPE (Canine Performance Events)approved judge, judging @ events, of and from the claims, including all liabilities, claims actions, damages, costs or expenses of any kind arising out of or relating thereto. I understand and agree that this release includes any claims based on the actions, omissions, or negligence of the aforementioned parties, whether a COVID-19 infection occurs before, during, or after participation in any dog related activities at FFP.

By signing this waiver, I agree to the following:

I attest to the best of my knowledge that I DO NOT have COVID-19 at the time of attending dog related activities at FFP. I also attest that I have not knowingly been in contact with or exposed to any known carrier of COVID-19 within the past 21 days. I agree that I will follow all FFP protocols, city, county, and state rules and requirements to reduce any exposure and possibility of contracting or spreading the virus during my attendance at FFP.

I fully submit that FFP, and any other person(s) affiliated with dog related activities taking place on ,or at ,FFP facility are in no way liable for any present or future COVID-19 exposure incurred at any time by any person, whether in attendance or not, during our after my dog related activities at FFP.

Signature of student/exhibitor/participant or parent (if handler or participant is under 18 yrs old)

Date

Printed name of student/exhibitor/participant or parent (if handler or participant is under 18 yrs old)

	Ring 1	Ring 2
<p>Friday 10:00 AM start</p> <p>Tall to Small</p> <p>First time in each ring is accurate, all others are estimates. Plan to be at the trial site well before the listed time in case we run early.</p>	<p>10:00 Prm Jww Walk Run</p> <p>11:00 Prm Std Walk Run</p> <p>12:00 Exc Std Walk 24-20 Run</p> <p>12:50 Walk 16-4 Run</p> <p>2:15 Open Std Walk Run</p> <p>3:15 Novice Std Walk Run</p> <p>3:45 Done</p>	<p>10:15 Fast Exc/Opn/Nov Walk Run</p> <p>11:40 T2B Walk Run</p> <p>12:50 Nov Jww Walk Run</p> <p>1:50 Open Jww Walk Run</p> <p>2:45 Exc Jww Walk 24-20 Run</p> <p>3:25 Walk 16-4 Run</p> <p>4:00 Done</p>

Saturday

9:00 AM start

Small to Tall

First time in each ring is accurate, all others are estimates. Plan to be at the trial site well before the listed time in case we run early.

9:00 **Prm Jww**
Walk
Run

10:00 **Prm Std**
Walk
Run

11:00 **Exc Std**
Walk 4-12
Run

11:45 Walk 16
Run 16

12:25 Walk 20-24
Run

1:40 **Open Std**
Walk
Run

2:45 **Novice Std**
Walk
Run

3:20 Done

9:15 **Fast Exc/Opn/Nov**
Walk (4-16)
Walk (20-24)
Run

10:50 **T2B**
Walk
Run

12:00 **Nov Jww**
Walk
Run

1:00 **Open Jww**
Walk
Run

1:50 **Exc Jww**
Walk 4-12
Run

2:35 Walk 16
Run

3:10 Walk 20-24
Run

3:40 Done

Sunday

9:00 AM start

Tall to Small

First time in each ring is accurate, all others are estimates. Plan to be at the trial site well before the listed time in case we run early.

9:00 **Prm Jww**
Walk
Run

10:00 **Prm Std**
Walk
Run

11:00 **Exc Std**
Walk 24-20
Run

11:50 Walk 16-4
Run

1:00 **Open Std**
Walk
Run

2:10 **Novice Std**
Walk
Run

2:35 Done

9:15 **Fast Exc/Opn/Nov**
Walk
Run

10:30 **T2B**
Walk
Run

11:40 **Nov Jww**
Walk
Run

12:30 **Open Jww**
Walk
Run

1:15 **Exc Jww**
Walk 24-20
Run

2:00 Walk 16-4
Run

2:30 Done

TRIAL ENTRY STATISTICS Preliminary running order contingent on move-ups not yet received.

Friday – 345 runs

STD		NOV										
Division	4	8	12	16	20	24	24C	14	18	Judge	Ring	
NOV A					1					Dale Mahoney	1	
NOV B				2	4	2				Dale Mahoney	1	
NOV P				5	2					Dale Mahoney	1	
NOV				7	7	2				TOTAL	16	
STD		OPN										
Division	4	8	12	16	20	24	24C	14	18	Judge	Ring	
OPEN		1	1	1	6	1				Dale Mahoney	1	
OPEN P		2		4	1					Dale Mahoney	1	
OPN		3	1	5	7	1				TOTAL	17	
STD		EXC										
Division	4	8	12	16	20	24	24C	14	18	Judge	Ring	
EX		3		2	4	1				Dale Mahoney	1	
EX P				1	2					Dale Mahoney	1	
MAS		2	4	6	12	6				Dale Mahoney	1	
MAS P	1	9	1	12	5					Dale Mahoney	1	
EXC	1	14	5	21	23	7				TOTAL	71	
STD		PREM										
Division	4	8	12	16	20	24	24C	14	18	Judge	Ring	
PRM		1	1	2	6	1				Dale Mahoney	1	
PRM P		2	1	2	1					Dale Mahoney	1	
PREM		3	2	4	7	1				TOTAL	17	
JWW		NOV										
Division	4	8	12	16	20	24	24C	14	18	Judge	Ring	
NOV A					1					Jan Skurzynski	2	
NOV B		2		1	6	4				Jan Skurzynski	2	
NOV P		1		3	3					Jan Skurzynski	2	
NOV		3		4	10	4				TOTAL	21	
JWW		OPN										
Division	4	8	12	16	20	24	24C	14	18	Judge	Ring	
OPEN				3	7	3				Jan Skurzynski	2	
OPEN P		1		5	1					Jan Skurzynski	2	
OPN		1		8	8	3				TOTAL	20	
JWW		EXC										
Division	4	8	12	16	20	24	24C	14	18	Judge	Ring	
EX		3	1	4	3					Jan Skurzynski	2	
EX P				2	1					Jan Skurzynski	2	
MAS		2	4	5	12	6				Jan Skurzynski	2	
MAS P	2	10	2	11	4					Jan Skurzynski	2	
EXC	2	15	7	22	20	6				TOTAL	72	
JWW		PREM										
Division	4	8	12	16	20	24	24C	14	18	Judge	Ring	
PRM		1	1	2	8	1				Dale Mahoney	1	
PRM P		3	1	2	1					Dale Mahoney	1	
PREM		4	2	4	9	1				TOTAL	20	
FAST		NOV										
Division	4	8	12	16	20	24	24C	14	18	Judge	Ring	
NOV A					1					Jan Skurzynski	2	
NOV B		2		2	6	3				Jan Skurzynski	2	
NOV P		1		3	2					Jan Skurzynski	2	
NOV		3		5	9	3				TOTAL	20	
FAST		OPN										
Division	4	8	12	16	20	24	24C	14	18	Judge	Ring	
OPEN		1			2	1				Jan Skurzynski	2	
OPEN P				3						Jan Skurzynski	2	
OPN		1		3	2	1				TOTAL	7	
FAST		EXC										
Division	4	8	12	16	20	24	24C	14	18	Judge	Ring	
EX		1			2					Jan Skurzynski	2	
EX P					1					Jan Skurzynski	2	
MAS		2	1	1	5	1				Jan Skurzynski	2	
MAS P		1		3	1					Jan Skurzynski	2	
EXC		4	1	4	9	1				TOTAL	19	
T2B		T2B										
Division	4	8	12	16	20	24	24C	14	18	Judge	Ring	
PREF		3		12	4					Jan Skurzynski	2	
REG		4	2	3	13	4				Jan Skurzynski	2	
T2B		7	2	15	17	4				TOTAL	45	
Judge Totals										Ring Totals		
Jan Skurzynski		204								Ring 1	141	
Dale Mahoney		141								Ring 2	204	

Saturday – 384 runs

STD		NOV									
Division	4	8	12	16	20	24	24C	14	18	Judge	Ring
NOV A		1		2						Jan Skurzynski	1
NOV B				1	5	4				Jan Skurzynski	1
NOV P				5	3					Jan Skurzynski	1
NOV		1		8	8	4				TOTAL	21
STD		OPN									
Division	4	8	12	16	20	24	24C	14	18	Judge	Ring
OPEN		1	1	1	7	3				Jan Skurzynski	1
OPEN P		2		4	2					Jan Skurzynski	1
OPN		3	1	5	9	3				TOTAL	21
STD		EXC									
Division	4	8	12	16	20	24	24C	14	18	Judge	Ring
EX		3		1	3					Jan Skurzynski	1
EX P		1		1	5					Jan Skurzynski	1
MAS		4	6	5	15	7				Jan Skurzynski	1
MAS P	2	8	3	11	4					Jan Skurzynski	1
EXC	2	16	9	18	27	7				TOTAL	79
STD		PREM									
Division	4	8	12	16	20	24	24C	14	18	Judge	Ring
PRM		2	3		8	2				Jan Skurzynski	1
PRM P		2	1	1	1					Jan Skurzynski	1
PREM		4	4	1	9	2				TOTAL	20
JWW		NOV									
Division	4	8	12	16	20	24	24C	14	18	Judge	Ring
NOV A		1		2						Dale Mahoney	2
NOV B		1		1	4	5				Dale Mahoney	2
NOV P		1		3	2					Dale Mahoney	2
NOV		3		6	6	5				TOTAL	20
JWW		OPN									
Division	4	8	12	16	20	24	24C	14	18	Judge	Ring
OPEN		1		4	5					Dale Mahoney	2
OPEN P		1		5						Dale Mahoney	2
OPN		1		6	4	5				TOTAL	16
JWW		EXC									
Division	4	8	12	16	20	24	24C	14	18	Judge	Ring
EX		3	1	2	5					Dale Mahoney	2
EX P		1		2	7					Dale Mahoney	2
MAS		4	6	5	15	7				Dale Mahoney	2
MAS P	2	9	4	11	5					Dale Mahoney	2
EXC	2	17	11	20	32	7				TOTAL	89
JWW		PREM									
Division	4	8	12	16	20	24	24C	14	18	Judge	Ring
PRM		1	1		7	1				Jan Skurzynski	1
PRM P		2	1	1	2					Jan Skurzynski	1
PREM		3	2	1	9	1				TOTAL	16
FAST		NOV									
Division	4	8	12	16	20	24	24C	14	18	Judge	Ring
NOV A				1						Dale Mahoney	2
NOV B		1		1	5	2				Dale Mahoney	2
NOV P		1		2	1					Dale Mahoney	2
NOV		2		4	6	2				TOTAL	14
FAST		OPN									
Division	4	8	12	16	20	24	24C	14	18	Judge	Ring
OPEN		2		1	1	2				Dale Mahoney	2
OPEN P				3						Dale Mahoney	2
OPN		2		4	1	2				TOTAL	9
FAST		EXC									
Division	4	8	12	16	20	24	24C	14	18	Judge	Ring
EX		1			2	1				Dale Mahoney	2
EX P		1		2	2					Dale Mahoney	2
MAS		6	1	3	4	1				Dale Mahoney	2
MAS P		3		3	1					Dale Mahoney	2
EXC		11	1	8	9	2				TOTAL	31
T2B		T2B									
Division	4	8	12	16	20	24	24C	14	18	Judge	Ring
PREF		2		11	7					Dale Mahoney	2
REG		7	1	4	10	6				Dale Mahoney	2
T2B		9	1	15	17	6				TOTAL	48
Judge Totals											
Jan Skurzynski		157								Ring Totals	
Dale Mahoney		227								Ring 1	157
										Ring 2	227

Sunday – 311 runs

STD		NOV									
Division	4	8	12	16	20	24	24C	14	18	Judge	Ring
NOV A			1							Dale Mahoney	1
NOV B		1		1	2	2				Dale Mahoney	1
NOV P				5	2					Dale Mahoney	1
NOV		1	1	6	4	2				TOTAL	14
STD		OPN									
Division	4	8	12	16	20	24	24C	14	18	Judge	Ring
OPEN		1	1	1	6	1				Dale Mahoney	1
OPEN P		2	1	3	3					Dale Mahoney	1
OPN		3	2	4	9	1				TOTAL	19
STD		EXC									
Division	4	8	12	16	20	24	24C	14	18	Judge	Ring
EX		3		1		1				Dale Mahoney	1
EX P		1		1	5					Dale Mahoney	1
MAS		4	5	3	14	8				Dale Mahoney	1
MAS P	1	9	1	7	4					Dale Mahoney	1
EXC	1	17	6	12	23	9				TOTAL	68
STD		PREM									
Division	4	8	12	16	20	24	24C	14	18	Judge	Ring
PRM		2	1	2	4	2				Dale Mahoney	1
PRM P		2		2	2					Dale Mahoney	1
PREM		4	1	4	6	2				TOTAL	17
JWW		NOV									
Division	4	8	12	16	20	24	24C	14	18	Judge	Ring
NOV A			1		1					Jan Skurzynski	2
NOV B		1		1	1	2				Jan Skurzynski	2
NOV P		1	1	4	2					Jan Skurzynski	2
NOV		2	2	5	4	2				TOTAL	15
JWW		OPN									
Division	4	8	12	16	20	24	24C	14	18	Judge	Ring
OPEN				1	3	3				Jan Skurzynski	2
OPEN P		1		3	1					Jan Skurzynski	2
OPN		1		4	4	3				TOTAL	12
JWW		EXC									
Division	4	8	12	16	20	24	24C	14	18	Judge	Ring
EX		3	1		4					Jan Skurzynski	2
EX P		1		1	5					Jan Skurzynski	2
MAS		4	5	4	14	8				Jan Skurzynski	2
MAS P	1	10	2	7	5					Jan Skurzynski	2
EXC	1	18	8	12	28	8				TOTAL	75
JWW		PREM									
Division	4	8	12	16	20	24	24C	14	18	Judge	Ring
PRM		1	1	2	5	1				Dale Mahoney	1
PRM P		3		2	1					Dale Mahoney	1
PREM		4	1	4	6	1				TOTAL	16
FAST		NOV									
Division	4	8	12	16	20	24	24C	14	18	Judge	Ring
NOV A					1					Jan Skurzynski	2
NOV B		4		1	3	1				Jan Skurzynski	2
NOV P				4	1					Jan Skurzynski	2
NOV		4		5	5	1				TOTAL	15
FAST		OPN									
Division	4	8	12	16	20	24	24C	14	18	Judge	Ring
OPEN		1			1	1				Jan Skurzynski	2
OPEN P				2						Jan Skurzynski	2
OPN		1		2	1	1				TOTAL	5
FAST		EXC									
Division	4	8	12	16	20	24	24C	14	18	Judge	Ring
EX		1			3					Jan Skurzynski	2
EX P		2			2					Jan Skurzynski	2
MAS		5			4	1				Jan Skurzynski	2
MAS P		2		2	1					Jan Skurzynski	2
EXC		10		2	10	1				TOTAL	23
T2B		T2B									
Division	4	8	12	16	20	24	24C	14	18	Judge	Ring
PREF		2		6	7					Jan Skurzynski	2
REG		6		1	7	3				Jan Skurzynski	2
T2B		8		7	14	3				TOTAL	32
Judge Totals										Ring Totals	
Jan Skurzynski		177								Ring 1	134
Dale Mahoney		134								Ring 2	177