

THANK YOU for COMING to the SHOW!!!!!!

Samoyed Club of Washington State Running Order and Class Information Nov 27-29, 2020

Fun Fur Paws – Mt. Vernon, WA

I-5 North/South: Take Exit #218 (Starbird Rd) and East (Southbound turn left, Northbound turn right). Continue East to the 4-way stop at Bulson Rd and turn left. Follow Bulson Rd. to the intersection with Tyee Rd (0.7 mi). Turn left and then after a short distance, turn right onto Stargate Place (look for the sign for Fun Fur Paws). Follow the road to the arena and parking.

Judge: **Christian Eckhoff & Robin Kletke**

NOTE: Due to the increasing COVID cases and travel restrictions, Robin Kletke is taking over Terry LeClair's classes. He will be judging Terry's courses. You are entitled to a refund for classes with a judge change – but be aware that the AKC has temporarily relaxed the need for multiple judges for titles.

Class Schedule: See charts below: **Start 10:00 AM Friday and 9:00 AM on weekend**

Opening/Closing: **Opened 10/21/20, closed 11/20/20**

Walkthroughs: There will be split walkthroughs for **Exc Std and Jww**. All other classes will be a combined walkthrough. There will be plenty of walkthrough time for each class, so don't worry. ☺
We may need to combine or alter walkthrus slightly due to COVID (like a walk/walk-run/run).

Veterinarian: 24 Hour Pet Emergency Center, 14434 Avon Allen Rd., Mt. Vernon, WA 360-848-5911
Chuckanut Valley Veterinarian (staffed 24/7), 896 N. Burlington Rd., Burlington, WA 360-757-3722

Moveups: The deadline for moveups is Nov. 23rd at 6PM. Moveups must be received in writing or email by that deadline. Day-to-Day moveups are being accepted for Saturday and Sunday.

Setup and crating: **There is NO general crating allowed in the building. Due to the COVID limits on number of participants in the building at a time, we need the capacity to handle simultaneous walkthroughs.**

Popup tents and crating is available along the West fence and North grass areas. If you are crating from your car, make sure to leave windows/doors open for air flow. If using a popup or crate on the grass, please do NOT use mats or leave items overnight.

RVs: Overnight RV camping is limited and must be reserved. Email k.timmons@earthlink.net with questions.

Food: Due to the required COVID restrictions by the state, we will NOT be providing any food, snacks or refreshments at the show. Please bring your own provisions ☺

Workers: Even given all the new "rules" and capacity limits, we STILL need your help putting on the show. If you can help out for a class – or a day – let us know. We'll have a chief worker person coordinating thing and likely have the white boards setup like usual. THANKS!

Measuring: A volunteer measuring official will be on site but measuring during these COVID times is different. If your dog can be left at the table with you at least 6' away (safely!) and measured by a man in a mask, then we can potentially do the measure. Check with the score table for more info.

Important Housekeeping Info

Please use the exercise fields or the grassy areas around the parking lot to walk your dog. The fenced agility fields are off limits. Please pick up after your dog. If your dog accidentally relieves itself on the building structure, please use the cleaning sprays provided by Fun Fur Paws.

5 MPH Speed Limit at Fun Fur Paws

COVID Specific Information

Masks must be worn at all times in the building

COVID Check-in: All persons at the event MUST check in each day with the Covid desk. You will be asked a set of COVID related questions (are you sick, have you been exposed, etc.). You may also have your temp checked with a non-contact thermometer. After check-in you will be given a wrist band – new one each day..

You will not be allowed in the building without a wrist band.

Access Inside: To comply with the State’s COVID rules, we are restricting access inside the building. We will be limiting running orders as needed to keep under the capacity limits.

You may have someone come in and video your runs or otherwise help you during your run.

The state is prohibiting vendors, guests, and spectators at these events.

Building Flow: We are attempting to limit contact inside the building between participants. To do that, we are going to set up a “flow” of people entering and exiting the building for their runs. Basically, we are setting up a door to enter the building for each ring, and a door to exit. We will mark the paths accordingly.

The Exc/Prem ring may enter/exit the building from the same set of doors on the east middle of the building. There is a man-door on the west side, but that is where the course builders and other staff will be working and staging. If at all possible, we would like exhibitors to NOT use that west door. We will have the center aisle established to facilitate flow for the Exc/Prem ring.

The area around the trial sec (ramp and upper platform) are off limits to the public.

The following picture shows the door locations, parking, crating/popups outside, and other info.

Course Maps: We will not be providing general paper copies of course maps. Maps will be made available on our website - r2agility.net (and will be available on the local WiFi system as well) sometime after 6PM the previous night. If you need a paper copy, please print one at home.

Leashes: We are planning on a leash runner, but AKC rules now allow you to put your leash in your pocket, or tie around your waist while you run. This allows only YOU to handle your leash. NOTE: if your dog grabs/tugs on the leash while running, the judge will signal an ‘E’. ☹️

Gate Check-in: We will have a normal gate steward with a paper gate sheet, but will also be using a new electronic gate checking and monitoring system available by any internet or wifi enabled device with a web browser.

The new system allows you to check-in, mark conflict or absent, see progress, and live scores as they are entered into the computer. Please check the status to make sure your runs are correct.

Maps will also be available on the same page (internet or local) sometime after 6PM.

Via Internet – Open a browser and go to www.r2agility.net	Via WiFi: Turn on WiFi. Select one of the following: R2Net (local router) – no password needed R2Gate (extended WiFi mesh) – pswd: r2agility1 Open a browser and go to 192.168.0.7 The local WiFi does NOT have an internet connection
	

Most devices have a QR scanner (like QR Droid for Android devices) that will automatically scan the code and open up the browser to that address. Saves typing ☺

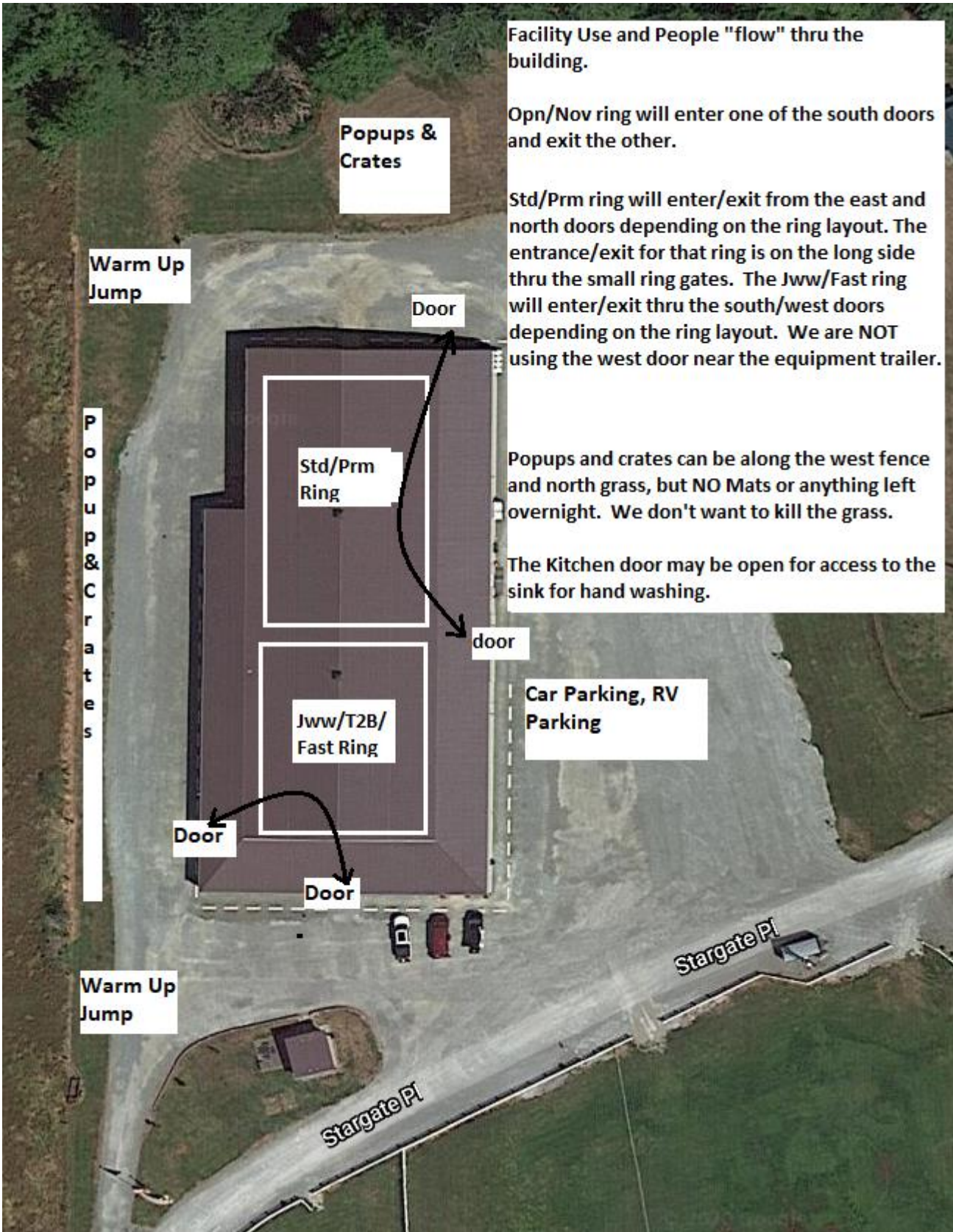
Results: Results will be posted outside the building and will be available on the same web page as the running order. We will also post results to the website as they are generated throughout the day so you can get them remotely.

COVID Waiver: **Due to the nature of our current COVID environment, a waiver will be required to be signed by all persons at the facility. Those with minors, please sign a waiver for your child.**

While we are doing all that we can to provide the best environment possible to hold agility events at FFP, we understand that COVID is an infectious disease and outside our control. The following waiver is designed to hold FFP, the club, and trial staff harmless for events related to the COVID pandemic.

Please read the attached waiver, sign, and bring with you to the show. You can give the waiver to the person handling the COVID check-in procedure.

Again – all of us thank you for your help in getting agility events running again!! With all of us working together, we can have our events in the best manner possible and continue to hold agility shows in the future!



Facility Use and People "flow" thru the building.

Opn/Nov ring will enter one of the south doors and exit the other.

Std/Prm ring will enter/exit from the east and north doors depending on the ring layout. The entrance/exit for that ring is on the long side thru the small ring gates. The Jww/Fast ring will enter/exit thru the south/west doors depending on the ring layout. We are NOT using the west door near the equipment trailer.

Popups and crates can be along the west fence and north grass, but NO Mats or anything left overnight. We don't want to kill the grass.

The Kitchen door may be open for access to the sink for hand washing.

Popups & Crates

Warm Up Jump

Door

Std/Prm Ring

door

Jww/T2B/
Fast Ring

Door

Car Parking, RV
Parking

Door

P
o
p
u
p
&
C
r
a
t
e
s

Warm Up
Jump

Stargate Pl

Stargate Pl

**Assumption of the Risk and Waiver of Liability Relating to
Coronavirus/COVID-19**

The novel coronavirus, COVID -19, has been declared a worldwide pandemic by the World Health Organization (WHO). COVID-19 is EXTREMELY contagious and is believed to spread mainly from person to person contact. *As a result, federal, state & local governments and federal and state health agencies recommend social distancing and in many locations, have prohibited the congregation of large groups of people. ~ May 2020*

Fun Fur Paws LLC (FFP) & Catch the Wave Dog Training (Marie P) & Susan Shearer (SS) have put in place some new protocols & guidelines/preventative measures to help reduce the spread of COVID-19 at the FFP facility ; however , FFP CANNOT guarantee that you will not become exposed to, or infected with COVID-19. Further, attending classes/lessons, open practices, play days, any events, dog-related activities or exercising your dog on & in FFP property could increase your risk of contracting COVID-19.

By signing this agreement, I acknowledge the contagious nature of COVID-19 and voluntarily assume the risk that I may be exposed to, or infected by COVID-19 by attending dog related, or any activities at FFP and that such exposure or infection may result in personal injury, illness, permanent disability, or death. I understand that the risk of becoming exposed to, or infected by COVID-19 at FFP may result from the actions, omissions, or negligence of myself and others, including but not limited to FFP, trainers, instructors, assistant instructors, members, directors, governors, agents, event secretary, event-giving club, AKC, NADAC, CPE and the facility owner and any employees or volunteers of the aforementioned parties, and any "organizations approved judge", judging at events held at FFP.

I voluntary agree to assume all of the foregoing risks and accept sole responsibility for any injury to myself (including but not limited to; personal injury, illness, permanent disability, or death), illness, damage, loss, claim, liability, ore expense, of any kind, that I may experience or incur in connection with my attendance or participation in dog related activities held at FFP. On my behalf, I hereby release, covenant not to sue, discharge, and hold harmless the facility, FFP, its owners, Dave and Melissa Burton, instructors/ teachers, or instructors/teachers assistants, an event giving club, their members, directors, governors, agents, event secretary, any employees or volunteers of the aforementioned parties., and any AKC(American Kennel Club), NADAC(North American Dog Agility Council), CPE (Canine Performance Events)approved judge, judging @ events, of and from the claims, including all liabilities, claims actions, damages, costs or expenses of any kind arising out of or relating thereto. I understand and agree that this release includes any claims based on the actions, omissions, or negligence of the aforementioned parties, whether a COVID-19 infection occurs before, during, or after participation in any dog related activities at FFP.

By signing this waiver, I agree to the following:

I attest to the best of my knowledge that I DO NOT have COVID-19 at the time of attending dog related activities at FFP. I also attest that I have not knowingly been in contact with or exposed to any known carrier of COVID-19 within the past 21 days. I agree that I will follow all FFP protocols, city, county, and state rules and requirements to reduce any exposure and possibility of contracting or spreading the virus during my attendance at FFP.

I fully submit that FFP, and any other person(s) affiliated with dog related activities taking place on ,or at ,FFP facility are in no way liable for any present or future COVID-19 exposure incurred at any time by any person, whether in attendance or not, during our after my dog related activities at FFP.

Signature of student/exhibitor/participant or parent (if handler or participant is under 18 yrs old)

Date

Printed name of student/exhibitor/participant or parent (if handler or participant is under 18 yrs old)

	Ring 1	Ring 2
<p>Friday 10:00 AM start</p> <p>Tall to Small</p> <p>First time in each ring is accurate, all others are estimates. Plan to be at the trial site well before the listed time in case we run early.</p>	<p>10:30 Prm Jww Walk Run</p> <p>Course Change</p> <p>11:30 Prm Std Walk Run</p> <p>Course Change</p> <p>12:35 Exc Std Walk 24-20 Run 24-20</p> <p>1:30 Walk 16 Run 16</p> <p>2:00 Walk 12-4 Run 12-4</p> <p>Course Change</p> <p>3:00 Open Std Walk Run</p> <p>Course Change</p> <p>4:00 Novice Std Walk Run</p> <p>4:20 Done</p>	<p>10:00 Fast Exc/Opn/Nov Walk (24-20) Walk (16-4) Run all heights / classes</p> <p>Course Change</p> <p>11:45 T2B Walk (24-20) Walk (16-4) Run</p> <p>fa</p> <p>Course Change</p> <p>1:00 Nov Jww Walk Run</p> <p>Course Change</p> <p>2:00 Open Jww Walk Run</p> <p>Course Change</p> <p>2:50 Exc Jww Walk 24-20 Run 24-20</p> <p>3:30 Walk 16 Run 16</p> <p>4:00 Walk 12-4 Run 12-4</p> <p>4:25 Done</p>

Saturday

9:00 AM start

Small to Tall

First time in each ring is accurate, all others are estimates. Plan to be at the trial site well before the listed time in case we run early.

9:30 **Prm Jww**
Walk
Run

Course Change

10:35 **Prm Std**
Walk
Run

Course Change

11:40 **Exc Std**
Walk 4-12
Run 4-12

12:25 Walk 16
Run 16

1:00 Walk 20-24
Run 20-24

Course Change

2:00 **Open Std**
Walk
Run

Course Change

3:10 **Novice Std**
Walk
Run

3:30 Done

Fast Exc/Opn/Nov
Walk (4-16)
Walk (20-24)
9:00 Run all heights / classes

Course Change

T2B
Walk (4-16)
Walk (20-24)
10:35 Run

Course Change

Nov Jww
Walk
11:50 Run

Course Change

Open Jww
Walk
12:45 Run

Course Change

Exc Jww
Walk 4-12
Run 4-12
1:35

2:15 Walk 16
Run 16

2:45 Walk 20-24
Run 20-24

3:10 Done

Sunday

9:00 AM start

Tall to Small

First time in each ring is accurate, all others are estimates. Plan to be at the trial site well before the listed time in case we run early.

9:30 **Prm Jww**
Walk
Run

Course Change

10:35 **Prm Std**
Walk
Run

Course Change

11:40 **Exc Std**
Walk 24-20
Run 24-20

12:30 Walk 16
Run 16

1:05 Walk 12-4
Run 12-4

Course Change

2:05 **Open Std**
Walk
Run

Course Change

3:00 **Novice Std**
Walk
Run

3:35 Done

Fast Exc/Opn/Nov
Walk
9:00 Run all heights / classes

Course Change

10:05 **T2B**
Walk
Run

Course Change

11:05 **Nov Jww**
Walk
Run

Course Change

12:00 **Open Jww**
Walk
Run

Course Change

12:50 **Exc Jww**
Walk 24-20
Run 24-20

1:30 Walk 16
Run 16

2:00 Walk 12-4
Run 12-4

2:20 Done

TRIAL ENTRY STATISTICS

Preliminary running order contingent on move-ups not yet received.

Friday – 354 runs

STD	NOV									Judge	Ring
Division	4	8	12	16	20	24	24C	14	18		
NOV A				1	1					Robin Kletke	1
NOV B				1	3	3				Robin Kletke	1
NOV P		3		2	4					Robin Kletke	1
NOV		3		4	8	3				TOTAL	18
STD	OPN										
Division	4	8	12	16	20	24	24C	14	18	Judge	Ring
OPEN			1	2	6	1				Robin Kletke	1
OPEN P		1			3					Robin Kletke	1
OPN		1	1	2	9	1				TOTAL	14
STD	EXC										
Division	4	8	12	16	20	24	24C	14	18	Judge	Ring
EX		1	1	2	2	1				Robin Kletke	1
EX P		1		2	2					Robin Kletke	1
MAS		3	4	4	16	3	1			Robin Kletke	1
MAS P		9	3	12	4					Robin Kletke	1
EXC		14	8	20	24	4	1			TOTAL	71
STD	PREM										
Division	4	8	12	16	20	24	24C	14	18	Judge	Ring
PRM		2	2	2	8					Robin Kletke	1
PRM P		2	1	4	1					Robin Kletke	1
PREM		4	3	6	9					TOTAL	22
JWW	NOV										
Division	4	8	12	16	20	24	24C	14	18	Judge	Ring
NOV A			1	1	1	1				Christian Eckhoff	2
NOV B		3		1	3	2				Christian Eckhoff	2
NOV P		4		1	7					Christian Eckhoff	2
NOV		7	1	3	11	3				TOTAL	25
JWW	OPN										
Division	4	8	12	16	20	24	24C	14	18	Judge	Ring
OPEN			2	5	6					Christian Eckhoff	2
OPEN P		1		1	3					Christian Eckhoff	2
OPN		1	2	6	9					TOTAL	18
JWW	EXC										
Division	4	8	12	16	20	24	24C	14	18	Judge	Ring
EX					2	3				Christian Eckhoff	2
EX P		2		2	1					Christian Eckhoff	2
MAS		4	4	4	16	3	1			Christian Eckhoff	2
MAS P		8	2	12	3					Christian Eckhoff	2
EXC		14	6	18	22	6	1			TOTAL	67
JWW	PREM										
Division	4	8	12	16	20	24	24C	14	18	Judge	Ring
PRM		1	3	2	8					Robin Kletke	1
PRM P	1		2	2						Robin Kletke	1
PREM	1	1	5	4	8					TOTAL	19
FAST	NOV										
Division	4	8	12	16	20	24	24C	14	18	Judge	Ring
NOV A			1	1	1	1				Christian Eckhoff	2
NOV B		3		2	3	2				Christian Eckhoff	2
NOV P		2			5					Christian Eckhoff	2
NOV		5	1	3	9	3				TOTAL	21
FAST	OPN										
Division	4	8	12	16	20	24	24C	14	18	Judge	Ring
OPEN				3	2					Christian Eckhoff	2
OPEN P	1			2						Christian Eckhoff	2
OPN	1			5	2					TOTAL	8
FAST	EXC										
Division	4	8	12	16	20	24	24C	14	18	Judge	Ring
EX		1	1		3	1				Christian Eckhoff	2
EX P		1	1	2						Christian Eckhoff	2
MAS		2		3	5					Christian Eckhoff	2
MAS P		1		5	1					Christian Eckhoff	2
EXC		5	2	10	9	1				TOTAL	27
T2B	T2B										
Division	4	8	12	16	20	24	24C	14	18	Judge	Ring
PREF		3	2	4	5					Christian Eckhoff	2
REG		2	3	2	15	7	1			Christian Eckhoff	2
T2B		5	5	6	20	7	1			TOTAL	44
Judge Totals										Ring Totals	
Robin Kletke		144								Ring 1	144
Christian Eckhoff		210								Ring 2	210

Saturday – 347 runs

STD	NOV											
Division	4	8	12	16	20	24	24C	14	18	Judge	Ring	
NOV B				2	2	1				Christian Eckhoff	1	
NOV P		3		4	3					Christian Eckhoff	1	
NOV		3		6	5	1				TOTAL	15	
Division	4	8	12	16	20	24	24C	14	18	Judge	Ring	
OPN				2	5					Christian Eckhoff	1	
OPN P			2	1	4					Christian Eckhoff	1	
OPN			2	3	9					TOTAL	14	
Division	4	8	12	16	20	24	24C	14	18	Judge	Ring	
EX		1		2	2	1				Christian Eckhoff	1	
EX P		1		2	1					Christian Eckhoff	1	
MAS		2	7	4	19	3	1			Christian Eckhoff	1	
MAS P	1	10	4	9	2					Christian Eckhoff	1	
EXC	1	14	11	17	24	4	1			TOTAL	72	
Division	4	8	12	16	20	24	24C	14	18	Judge	Ring	
PRM		1	2	4	6	1				Christian Eckhoff	1	
PRM P		1	1	5	1					Christian Eckhoff	1	
PREM		2	3	9	7	1				TOTAL	22	
Division	4	8	12	16	20	24	24C	14	18	Judge	Ring	
NOV B		1		1	2	2				Robin Kletke	2	
NOV P		3	1	2	4					Robin Kletke	2	
NOV		4	1	3	6	2				TOTAL	16	
Division	4	8	12	16	20	24	24C	14	18	Judge	Ring	
OPEN		1		4	5					Robin Kletke	2	
OPEN P			1	2	5					Robin Kletke	2	
OPN		1	1	6	10					TOTAL	18	
Division	4	8	12	16	20	24	24C	14	18	Judge	Ring	
EX				2	1	1				Robin Kletke	2	
EX P	1	2	1	2	1					Robin Kletke	2	
MAS		3	5	4	19	3	1			Robin Kletke	2	
MAS P	1	9	4	10	2					Robin Kletke	2	
EXC	2	14	10	18	23	4	1			TOTAL	72	
Division	4	8	12	16	20	24	24C	14	18	Judge	Ring	
PRM		2	1	3	7	1				Christian Eckhoff	1	
PRM P	1		2	4						Christian Eckhoff	1	
PREM	1	2	3	7	7	1				TOTAL	21	
Division	4	8	12	16	20	24	24C	14	18	Judge	Ring	
NOV B		1		1	1	2				Robin Kletke	2	
NOV P		1	3	1	4					Robin Kletke	2	
NOV		2	3	2	5	2				TOTAL	14	
Division	4	8	12	16	20	24	24C	14	18	Judge	Ring	
OPEN		2		2	2					Robin Kletke	2	
OPEN P	1	1		1						Robin Kletke	2	
OPN	1	3		3	2					TOTAL	9	
Division	4	8	12	16	20	24	24C	14	18	Judge	Ring	
EX			2	1	3					Robin Kletke	2	
EX P			1	1						Robin Kletke	2	
MAS		1	2	2	8					Robin Kletke	2	
MAS P		1	1	3						Robin Kletke	2	
EXC		2	6	7	11					TOTAL	26	
Division	4	8	12	16	20	24	24C	14	18	Judge	Ring	
PREF	1	5	3	4	2					Robin Kletke	2	
REG		4	4	2	18	4	1			Robin Kletke	2	
T2B	1	9	7	6	20	4	1			TOTAL	48	
Judge Totals										Ring Totals		
Robin Kletke		203								Ring 1	144	
Christian Eckhoff		144								Ring 2	203	

Sunday – 300 runs

STD	NOV										
Division	4	8	12	16	20	24	24C	14	18	Judge	Ring
NOV A				1						Robin Kletke	1
NOV B				2	1	1				Robin Kletke	1
NOV P		1		3	3					Robin Kletke	1
NOV		1		6	4	1				TOTAL	12
Division	4	8	12	16	20	24	24C	14	18	Judge	Ring
OPEN				2	6					Robin Kletke	1
OPEN P		1	2	1	3					Robin Kletke	1
OPN		1	2	3	9					TOTAL	15
Division	4	8	12	16	20	24	24C	14	18	Judge	Ring
EX		1		3	1	1				Robin Kletke	1
EX P				2	1					Robin Kletke	1
MAS		3	7	5	17	6	1			Robin Kletke	1
MAS P		8	1	11	2					Robin Kletke	1
EXC		12	8	21	21	7	1			TOTAL	70
Division	4	8	12	16	20	24	24C	14	18	Judge	Ring
PRM		2	1	3	10	1				Robin Kletke	1
PRM P		2		2	1					Robin Kletke	1
PREM		4	1	5	11	1				TOTAL	22
Division	4	8	12	16	20	24	24C	14	18	Judge	Ring
NOV A				1						Christian Eckhoff	2
NOV B		2		1	2	1				Christian Eckhoff	2
NOV P		1		2	4					Christian Eckhoff	2
NOV		3		4	6	1				TOTAL	14
Division	4	8	12	16	20	24	24C	14	18	Judge	Ring
OPEN			1	5	5					Christian Eckhoff	2
OPEN P		1	1	2	5					Christian Eckhoff	2
OPN		1	2	7	10					TOTAL	20
Division	4	8	12	16	20	24	24C	14	18	Judge	Ring
EX				2	1	1				Christian Eckhoff	2
EX P			1	1	1					Christian Eckhoff	2
MAS		4	6	4	17	6	1			Christian Eckhoff	2
MAS P		8	1	11	2					Christian Eckhoff	2
EXC		12	8	18	21	7	1			TOTAL	67
Division	4	8	12	16	20	24	24C	14	18	Judge	Ring
PRM		1	2	3	7	1				Robin Kletke	1
PRM P				3						Robin Kletke	1
PREM		1	2	6	7	1				TOTAL	17
Division	4	8	12	16	20	24	24C	14	18	Judge	Ring
NOV A				1						Christian Eckhoff	2
NOV B		3		2		2				Christian Eckhoff	2
NOV P					1					Christian Eckhoff	2
NOV		3		3	1	2				TOTAL	9
Division	4	8	12	16	20	24	24C	14	18	Judge	Ring
OPEN				3	1					Christian Eckhoff	2
OPEN P				1						Christian Eckhoff	2
OPN				4	1					TOTAL	5
Division	4	8	12	16	20	24	24C	14	18	Judge	Ring
EX		1	2	1	1					Christian Eckhoff	2
EX P		1		1						Christian Eckhoff	2
MAS		1	1	2	6					Christian Eckhoff	2
MAS P		1		3						Christian Eckhoff	2
EXC		4	3	7	7					TOTAL	21
Division	4	8	12	16	20	24	24C	14	18	Judge	Ring
PREF		1		3	2					Christian Eckhoff	2
REG		1	2	4	12	2	1			Christian Eckhoff	2
T2B		2	2	7	14	2	1			TOTAL	28
Judge Totals										Ring Totals	
Robin Kletke		136								Ring 1	136
Christian Eckhoff		164								Ring 2	164