

American Manchester Terrier Club
Agility Trial - Running Order Information
Friday, Saturday and Sunday, April 15-17, 2016

LOCATION FOR TRIAL - Argus Ranch Facility for Dogs
35612 212th Way SE, Auburn, WA 98092 www.argusranchonline.com
This trial will be held indoors at Argus Ranch.

Driving Directions

From North or South End

Take I-5, I-405, SR-167 to Highway 18 eastbound. Exit onto Auburn-Black Diamond Road eastbound. Turn RIGHT onto SE Green Valley Road (just past Neely Mansion). Follow for about 7.5 miles. Turn RIGHT onto 212th Way SE
Take First LEFT into Argus Ranch and follow drive straight ahead to Arena and signed parking.

From Hwy. 410 or WA 164 (Auburn-Enumclaw Hwy.)

Turn LEFT onto 244th Ave. SE (approximately one mile out of Buckley) Go STRAIGHT at Light on SE 436th Way/WA-164. Go STRAIGHT at Stop Sign SE 416th St. Go STRAIGHT at Stop Sign SE 400th St. Turn LEFT at Stop Sign onto SE 384th St. Turn RIGHT at Stop Sign 212th WAY SE. Turn RIGHT at ARGUS RANCH Sign (just before Bridge). Follow drive STRAIGHT ahead to Arena and signed parking.

From SR-169

Turn onto SE Green Valley Road (in front of the Boondocks Nursery). Go about four miles. Turn LEFT onto 212th Way SE. Go over the Cement Bridge. (Whitney Bridge) Take First LEFT into ARGUS RANCH and follow drive straight ahead to Arena and signed parking.

Agility Trial Information

- Judges:** Debby Wheeler & Ronda Bermke
- Start Times:** Friday 9:30 AM, Weekend 8:30 AM – Rings will run at the same time.
- Class Schedule:** See the charts below
- Walkthroughs:** There will be a single walkthrough for each class with Exc Std and Jww split by height. The preliminary split is for Exc to be in 2 groups (4- 16, 20-26) – we may split these further at the show.
- Veterinarian:** 24-Hour Veterinarian: Sumner Vet Hospital, 16024 60th St. E, Sumner, WA 98390 253-863-2258
Directions: From Argus Ranch – turn left onto 212th Way SE and drive about 2 miles to the top of the hill to the ‘T’. Take a left and immediate right to stay on 212th Way SE and continue south for 3.2 miles to WA-164th/SE 436th St. Turn left for 2.0 miles and turn right on 244th Ave SE. Drive for 2 more miles to WA-410 (Enumclaw Buckley Rd) and turn right. Drive for 10.8 miles to the 166th Ave Exit and turn right onto Sumner Tapps Hwy E. Drive north for .3 miles and take a left onto 60th St. E Drive for .4 miles and the hospital is on the left.
- Moveups:** The deadline for move-ups is Monday April 11th, at 6PM. Move-ups must be received in writing or email by that deadline. Day-to-day move-ups are being accepted for Saturday and Sunday.
- Workers:** We are using the white board for workers. Please help out where you can ☺.
- Setup:** Setup will be available after 4PM on Thursday. Argus Ranch needs the time to prepare the surface.
- RVs:** All RV camping must be arranged with Argus Ranch. Contact Terri Kaluza at arfreservations@gmail.com for more details.

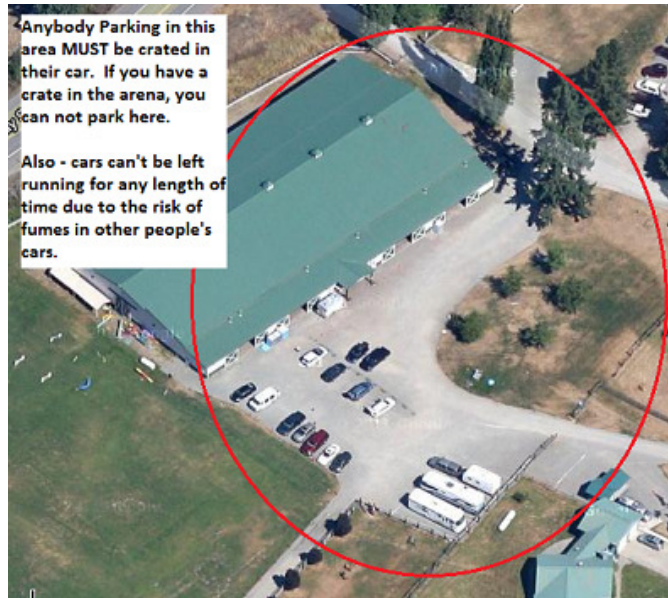
IMPORTANT NOTE:

White River bridge on 410 at Buckley will be closed from 10:00 pm April 15 to noon April 23.
See the WSDOT web page for more information.

Crating / Parking Information

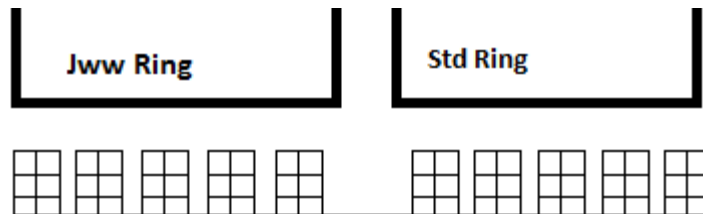
Car Parking:

If you are parking in the area indicated on this diagram – basically anywhere near the Arena, you may not also have a crate inside. This area is reserved for ONLY those people that want to crate out of their cars. Also make sure to not run your car's engine excessively as that puts exhaust fumes in the car next to yours and gasses out those dogs !!!



Crating Inside:

If you are crating in the arena, please use the following crating layout instead of just putting crates up against the walls. No expens. Here is a simple picture.



Crating in rows as shown. This lets us get more people into the area than if we just go up against the wall. Please put your chairs along the rings.

	Ring 1 – Debby	Ring 2 – Ronda
<p>Friday 9:30 AM start</p> <p><u>Tall to Small</u></p> <p>Times other than T2B and Exc Fast are rough approximates.</p>	<p>9:30 T2B Walk Run</p> <p>Course Change</p> <p>10:30 Prm Std Walk Run</p> <p>Course Change</p> <p>11:30 Exc Std Walk 26-20 Run 26-20</p> <p>12:30 Walk 16-4 Run 16-4</p> <p>Course Change</p> <p>2:10 Open Std Walk Run</p> <p>Course Change</p> <p>2:50 Novice Std Walk Run</p> <p>3:10 Done</p>	<p>Exc Fast Walk Run</p> <p>10:00 Course Change</p> <p>Open Fast Walk Run</p> <p>11:00 Course Change</p> <p>Nov Fast Walk Run</p> <p>11:30 Course Change</p> <p>Nov Jww Walk Run</p> <p>12:10 Course Change</p> <p>Open Jww Walk Run</p> <p>1:00 Course Change</p> <p>Exc Jww Walk 26-20 Run 26-20</p> <p>1:30 Walk 16-4 Run 16-4</p> <p>2:25 Course Change</p> <p>Prm Jww Walk Run</p> <p>3:45 Course Change</p> <p>4:10 Done</p>

	Ring 1 – Ronda	Ring 2 – Debby
Saturday 8:30 AM start <u>Small to Tall</u> Times other than T2B and Exc Fast are rough approximates.	8:30 T2B Walk Run Course Change	9:00 Exc Fast Walk Run Course Change
	9:30 Prm Std Walk Run Course Change	10:00 Open Fast Walk Run Course Change
	11:00 Exc Std Walk 4-12 Walk 16 Run 4-16	10:50 Nov Fast Walk Run Course Change
	12:30 Walk 20 Walk 24-26 Run 20-26 Course Change	11:30 Novice Jww Walk Run Course Change
	2:00 Open Std Walk Run Course Change	12:10 Open Jww Walk Run Course Change
	2:50 Novice Std Walk Run	1:00 Exc Jww Walk 4-12 Walk 16 Run 4-16
	3:00 Done	2:10 Walk 20 Walk 24-26 Run 20-26 Course Change
		3:30 Prm Jww Walk Run
		4:00 Done

	Ring 1 – Debby	Ring 2 – Ronda
Sunday 8:30 AM start <u>Tall to Small</u> Times other than T2B and Exc Fast are rough approximates.	8:30 T2B Walk Run Course Change	9:00 Exc Fast Walk Run Course Change
	9:30 Prm Std Walk Run Course Change	10:00 Open Fast Walk Run Course Change
	10:35 Exc Std Walk 26-24 Walk 20 Run 26-20	10:40 Nov Fast Walk Run Course Change
	12:00 Walk 16 Walk 12-4 Run 16-4	11:20 Nov Jww Walk Run Course Change
	Course Change Open Std Walk Run Course Change	12:00 Open Jww Walk Run Course Change
	1:45 Novice Std Walk Run Course Change	12:45 Exc Jww Walk 26-24 Walk 20 Run 26-20 Walk 16 Walk 12-4 Run 16-4
	2:20 Novice Std Walk Run Course Change	1:45 Exc Jww Walk 26-24 Walk 20 Run 26-20 Walk 16 Walk 12-4 Run 16-4
	2:40 Done	3:15 Prm Jww Walk Run Course Change
		3:40 Done

Saturday – 400 runs

STD		NOV										
Division	4	8	12	16	20	24	26	14	18	Judge	Ring	
NOV A					2					Ronda Bermke	1	
NOV B				1	2	3				Ronda Bermke	1	
NOV P					1					Ronda Bermke	1	
NOV				1	5	3				TOTAL RUNS	9	
STD		OPN										
Division	4	8	12	16	20	24	26	14	18	Judge	Ring	
OPEN			2		4	2				Ronda Bermke	1	
OPN			2		4	2				TOTAL RUNS	8	
STD		EXC										
Division	4	8	12	16	20	24	26	14	18	Judge	Ring	
EX			3	3	6	2				Ronda Bermke	1	
EX P			1							Ronda Bermke	1	
MAS		7	9	13	20	18				Ronda Bermke	1	
MAS P	6	7	5	6	2					Ronda Bermke	1	
EXC	6	14	18	22	28	20				TOTAL RUNS	108	
STD		PREM										
Division	4	8	12	16	20	24	26	14	18	Judge	Ring	
PRM		3	4	4	11	7				Ronda Bermke	1	
PRM P	1	1		2						Ronda Bermke	1	
PREM	1	4	4	6	11	7				TOTAL RUNS	33	
JWW		NOV										
Division	4	8	12	16	20	24	26	14	18	Judge	Ring	
NOV A					3					Debby Wheeler	2	
NOV B					3	3				Debby Wheeler	2	
NOV					6	3				TOTAL RUNS	9	
JWW		OPN										
Division	4	8	12	16	20	24	26	14	18	Judge	Ring	
OPEN			1	1	5	1				Debby Wheeler	2	
OPEN P				1						Debby Wheeler	2	
OPN			1	2	5	1				TOTAL RUNS	9	
JWW		EXC										
Division	4	8	12	16	20	24	26	14	18	Judge	Ring	
EX		1	2	2	3	3				Debby Wheeler	2	
EX P	1		1							Debby Wheeler	2	
MAS		7	11	14	22	19				Debby Wheeler	2	
MAS P	5	7	5	6	3					Debby Wheeler	2	
EXC	6	15	19	22	28	22				TOTAL RUNS	112	
JWW		PREM										
Division	4	8	12	16	20	24	26	14	18	Judge	Ring	
PRM		4	4	4	11	7				Debby Wheeler	2	
PRM P		1		2						Debby Wheeler	2	
PREM		5	4	6	11	7				TOTAL RUNS	33	
FAST		NOV										
Division	4	8	12	16	20	24	26	14	18	Judge	Ring	
NOV B			1		1	3				Debby Wheeler	2	
NOV			1		1	3				TOTAL RUNS	5	
FAST		OPN										
Division	4	8	12	16	20	24	26	14	18	Judge	Ring	
OPEN			1		5	2				Debby Wheeler	2	
OPEN P			1	1	1					Debby Wheeler	2	
OPN			2	1	6	2				TOTAL RUNS	11	
FAST		EXC										
Division	4	8	12	16	20	24	26	14	18	Judge	Ring	
EX			1	1	3	1				Debby Wheeler	2	
EX P			1							Debby Wheeler	2	
MAS		1	2	4	7	2				Debby Wheeler	2	
MAS P	1			2	1					Debby Wheeler	2	
EXC	1	1	4	7	11	3				TOTAL RUNS	27	
T2B		T2B										
Division	4	8	12	16	20	24	26	14	18	Judge	Ring	
PREF	1		1	2						Ronda Bermke	1	
REG		3	4	3	17	5				Ronda Bermke	1	
T2B	1	3	5	5	17	5				TOTAL RUNS	36	
Judge Totals										Ring Totals		
Ronda Bermke		194								Ring 1	194	
Debby Wheeler		206								Ring 2	206	

Sunday – 350 runs

STD		NOV										
Division	4	8	12	16	20	24	26	14	18	Judge	Ring	
NOV A						1				Debby Wheeler	1	
NOV B		1		1	1	5				Debby Wheeler	1	
NOV P		1			1					Debby Wheeler	1	
NOV		2		1	2	6				TOTAL RUNS	11	
STD		OPN										
Division	4	8	12	16	20	24	26	14	18	Judge	Ring	
OPEN			2			1				Debby Wheeler	1	
OPN			2			1				TOTAL RUNS	3	
STD		EXC										
Division	4	8	12	16	20	24	26	14	18	Judge	Ring	
EX			3	3	3	3				Debby Wheeler	1	
EX P			1	1						Debby Wheeler	1	
MAS		9	9	11	21	15				Debby Wheeler	1	
MAS P	4	9	5	6	2					Debby Wheeler	1	
EXC	4	18	18	21	26	18				TOTAL RUNS	105	
STD		PREM										
Division	4	8	12	16	20	24	26	14	18	Judge	Ring	
PRM		3	2	4	11	4				Debby Wheeler	1	
PRM P		2		1						Debby Wheeler	1	
PREM		5	2	5	11	4				TOTAL RUNS	27	
JWW		NOV										
Division	4	8	12	16	20	24	26	14	18	Judge	Ring	
NOV A						1				Ronda Bermke	2	
NOV B				1	2	5				Ronda Bermke	2	
NOV P		1								Ronda Bermke	2	
NOV		1		1	2	6				TOTAL RUNS	10	
JWW		OPN										
Division	4	8	12	16	20	24	26	14	18	Judge	Ring	
OPEN		1	1	1	2	1				Ronda Bermke	2	
OPEN P				1						Ronda Bermke	2	
OPN		1	1	2	2	1				TOTAL RUNS	7	
JWW		EXC										
Division	4	8	12	16	20	24	26	14	18	Judge	Ring	
EX		1	3	2	1	4				Ronda Bermke	2	
EX P			1							Ronda Bermke	2	
MAS		8	10	12	21	15				Ronda Bermke	2	
MAS P	4	9	5	7	3					Ronda Bermke	2	
EXC	4	18	19	21	25	19				TOTAL RUNS	106	
JWW		PREM										
Division	4	8	12	16	20	24	26	14	18	Judge	Ring	
PRM		3	2	4	9	3				Ronda Bermke	2	
PRM P	1	1		1						Ronda Bermke	2	
PREM	1	4	2	5	9	3				TOTAL RUNS	24	
FAST		NOV										
Division	4	8	12	16	20	24	26	14	18	Judge	Ring	
NOV B			1		1	2				Ronda Bermke	2	
NOV			1		1	2				TOTAL RUNS	4	
FAST		OPN										
Division	4	8	12	16	20	24	26	14	18	Judge	Ring	
OPEN					2					Ronda Bermke	2	
OPEN P			1	1						Ronda Bermke	2	
OPN			1	1	2					TOTAL RUNS	4	
FAST		EXC										
Division	4	8	12	16	20	24	26	14	18	Judge	Ring	
EX				2		1				Ronda Bermke	2	
EX P			1	1						Ronda Bermke	2	
MAS		1	2	4	8	3				Ronda Bermke	2	
MAS P	1				1					Ronda Bermke	2	
EXC	1	1	3	7	9	4				TOTAL RUNS	25	
T2B		T2B										
Division	4	8	12	16	20	24	26	14	18	Judge	Ring	
PREF	1	1	1	1						Debby Wheeler	1	
REG		2	3	2	7	6				Debby Wheeler	1	
T2B	1	3	4	3	7	6				TOTAL RUNS	24	
Judge Totals										Ring Totals		
Ronda Bermke		180								Ring 1	170	
Debby Wheeler		170								Ring 2	180	